

How to Fix an Outdoor Faucet

Outdoor faucet leaks are generally caused by either a loose packing nut or a defective packing washer. You will want to check the nut first. Here's how:

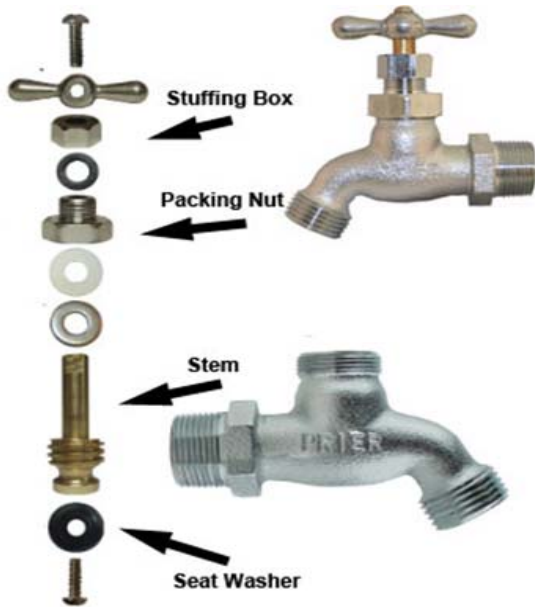
Step 1- Tighten the nut with a wrench or pliers

Step 2- Test faucet. If it is leaking despite a tight nut proceed to repair the washer.

- Washer Repair Steps-

Step 1- Shut off the water to the faucet from inside the house, remove the faucet handle, unscrew the nut and remove the washer.

Step 2- After purchasing a new washer, install it by applying the steps for its removal in reverse.

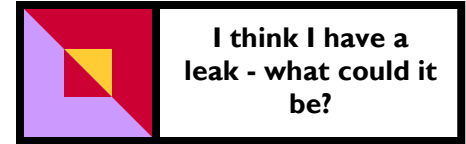
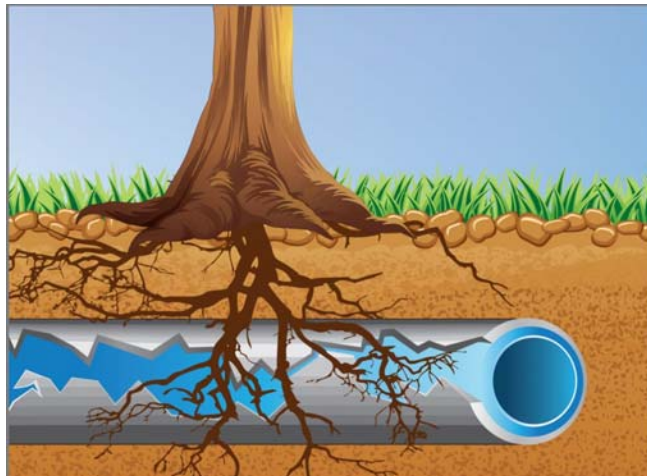


Pipes Underground & Tree Roots

Underground pipes can leak if the underground water supply pipe bursts or leaks along its length or where it connects to other sections and fittings. Pipe leaks and breaks can occur due to invasive roots, shifting ground, corroding pipes or drilling by local companies.



Tree roots are attracted to water, so if your pipes are leaking even the smallest amounts of fluid into the soil, tree roots will grow toward it. As the roots grow, they can aggressively invade your pipes and drains. The roots can break apart pipe joints, create cracks, and cause other invasive damage.



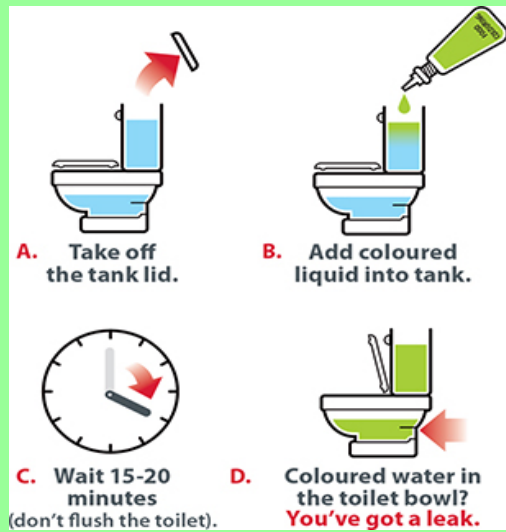
DETECT LEAKS
THROUGHOUT YOUR HOME



Common Household Leaks

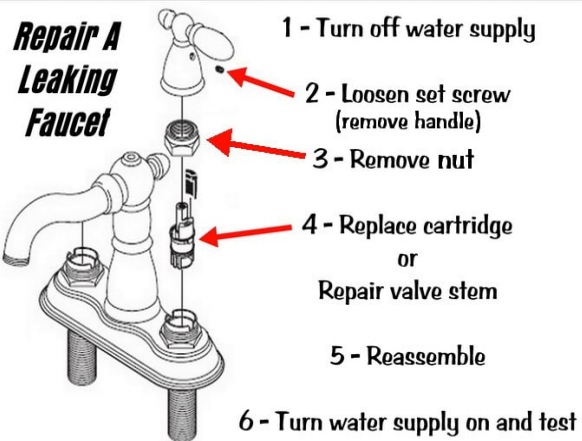
- Toilets
- Faucets
- Sink
- Tub / Shower
- Washing Machine
- Hot Water Heater
- Water Softener
- Appliance Seal
- Hose
- Pool
- Pipes Underground / Tree Roots

A simple check for leak for your toilet

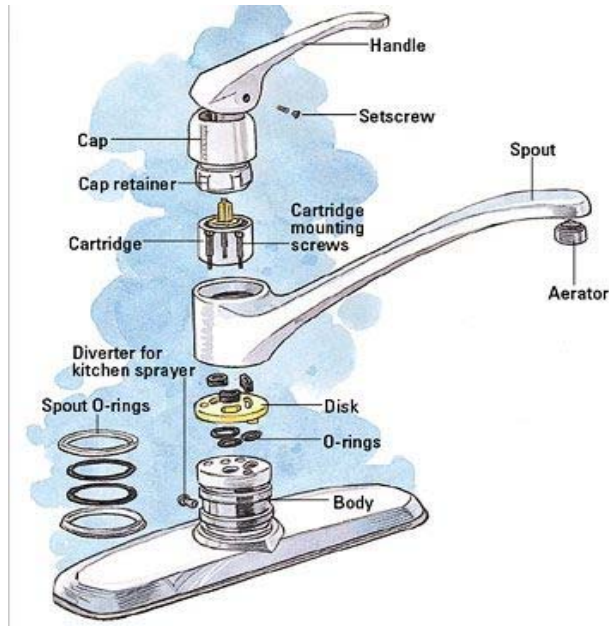


A large leak that is commonly found in toilets can cost you 200 gallons or more per day.

For Faucets & Sinks



A worn out valve seat, Problems with the washers, A broken O-ring & Loose Parts



Why is my washing machine leaking from underneath?

In most cases, the leak will be caused by a loose or punctured drain hose, a fault with the drain pump, or a worn-out tub-to-pump hose.



Hot Water Heater Leaks

Of all the issues that could cause a water heater to leak, the most common are **faulty cold and hot water connections, loose gaskets, a damaged drain valve, and corrosion inside the tank.** Some of these problems only require a little bit of tightening or updating to get your water heater back to full functionality.

