








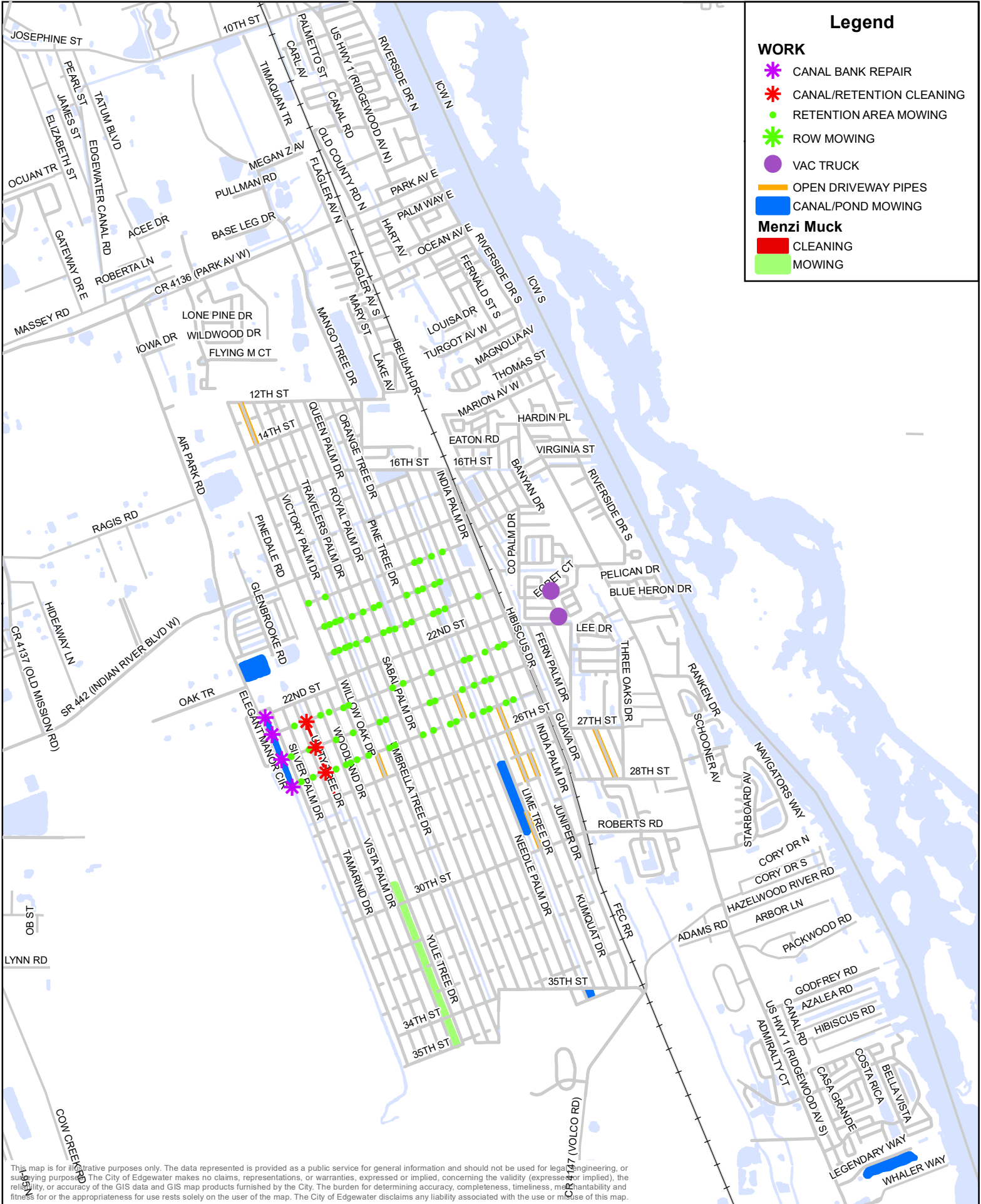
Legend

WORK

-  CANAL BANK REPAIR
-  CANAL/RETENTION CLEANING
-  RETENTION AREA MOWING
-  ROW MOWING
-  VAC TRUCK
-  OPEN DRIVEWAY PIPES
-  CANAL/POND MOWING

Menzi Muck

-  CLEANING
-  MOWING



This map is for illustrative purposes only. The data represented is provided as a public service for general information and should not be used for legal, engineering, or surveying purposes. The City of Edgewater makes no claims, representations, or warranties, expressed or implied, concerning the validity (expressed or implied), the reliability, or accuracy of the GIS data and GIS map products furnished by the City. The burden for determining accuracy, completeness, timeliness, maintainability and fitness for or the appropriateness for use rests solely on the user of the map. The City of Edgewater disclaims any liability associated with the use or misuse of this map.

STORMWATER MAINTENANCE MAP SEPTEMBER 2023

S:\Environmental Services\Stormwater Dept\
Monthly Reports\work-locations.mxd
Created by Sean Maroney

"Committed every day to building a better community through reliable infrastructure and exceptional service."

