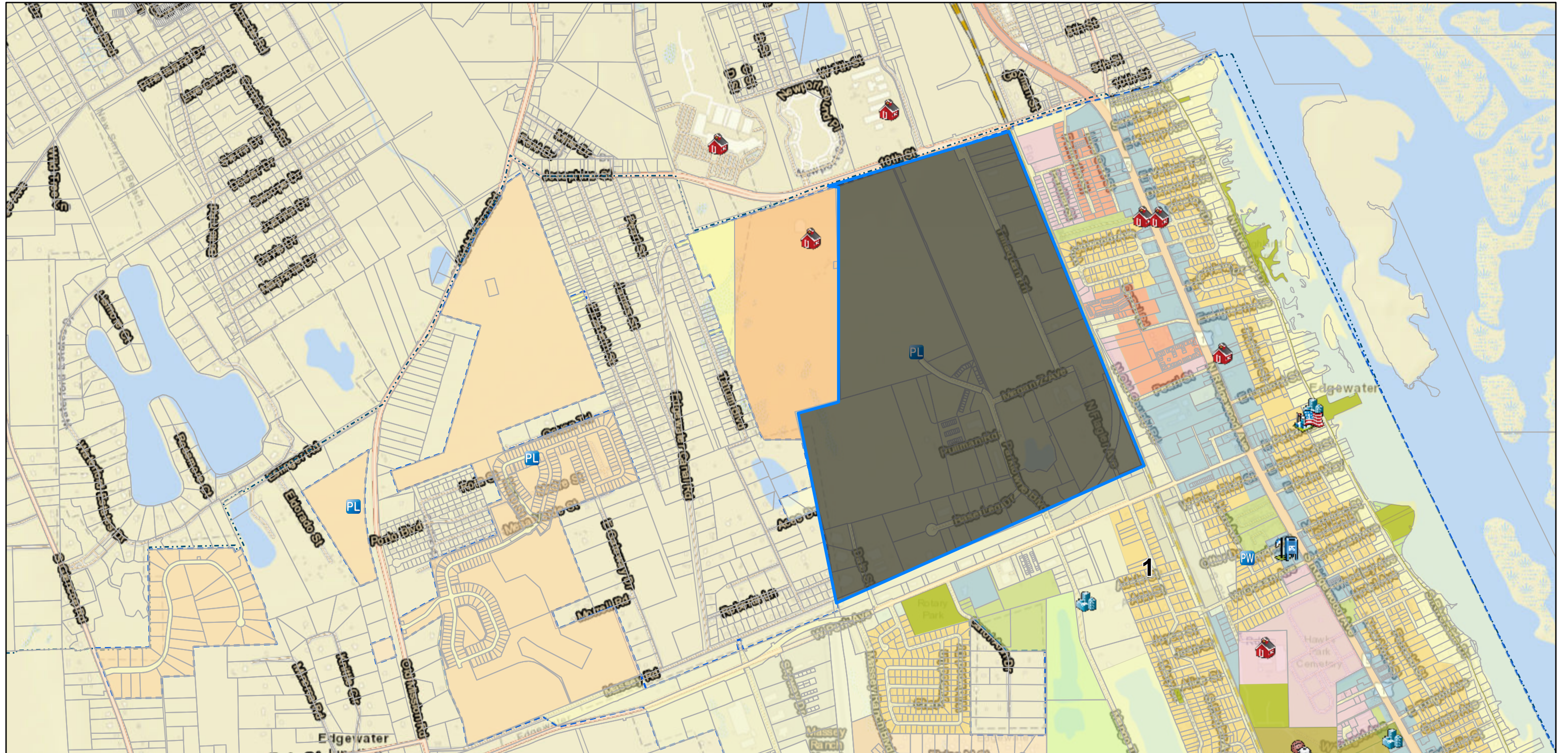


# City of Edgewater



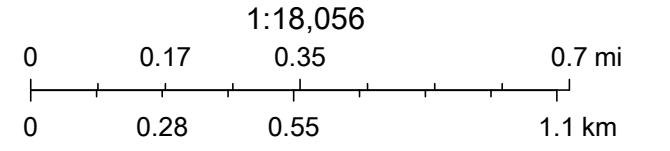
10/5/2023, 3:06:18 PM

- Public Notifications
- Planning and Zoning Items
- Public Works Projects
- Poling Stations - Voting
- Edgewater Public Facilities
- CITY FACILITY
- POLICE
- POST OFFICE
- SCHOOL
- YMCA
- City Parks
- Parcels

- Zoning
- AG - Agriculture
  - RT - Rural Transitional
  - R-1 - SF Residential
  - R-2 - SF Residential
  - R-3 - SF Residential
  - R-4 - MF Residential
  - R-5 - MF Residential

- RPUD - Residential Planned Unit Development
- MH-1 - Mobile Home Park
- B-2 - Neighborhood Business
- B-3 - Highway Commercial
- BPUD - Business Planned Unit Development
- I-1 - Light Industrial
- I-2 - Heavy Industrial

- IPUD - Industrial Planned Unit Development
- R - Recreation
- P/SP - Public/Semi-Public
- CN - Conservation
- County - Retains County Zoning
- City Council Districts
- 1
- Edgewater ISBA



Esri, HERE, Garmin, INCREMENT P, NGA, USGS, Esri, HERE, iPC