

Comprehensive Plan

Chapter 8

Intergovernmental Coordination Element

Goals, Objectives, and Policies

**City of Edgewater
Ordinance No. 2019-O-06**

GOALS, OBJECTIVES AND POLICIES

GOAL 1: Promote coordination and cooperation between The City of Edgewater and those agencies and parties which have an interest in the future and growth of the area through increased awareness of the plans, interests and concerns of all parties.

Objective 1.1: *Volusia County and Volusia County School Board Coordination.* The City shall continue to coordinate with Volusia County and the Volusia County School Board on matters involving planning for services, facilities, adjacent land uses and the area's natural resources.

- Policy 1.1.1:** *Planning for Adjacent Areas.* Pursuant to Chapter 171, Part II, Florida Statutes, Volusia County and the City of Edgewater have established an Interlocal Service Boundary Agreement (ISBA) recorded and effective on October 21, 2015. The agreement allows the City to annex properties within the Joint Planning Area that would not otherwise be eligible for annexation subject to provisions established in the ISBA.
- Policy 1.1.2:** *Coordination with Volusia County and Impacts of Development.* The City will coordinate with Volusia County and the Volusia Growth Management Commission regarding the impacts of development in Edgewater on adjacent local governments.
- Policy 1.1.3:** *Level of Service Issues and Capital Improvement Needs.* Provide for on-going coordination with Volusia County, the River to Sea TPO and FDOT relative to level of service issues and capital improvement needs for areas within and adjacent to Edgewater.
- Policy 1.1.4:** *Locating Future School Sites.* The City shall coordinate with the Volusia County School Board in locating future school sites during the development process. This coordination will be achieved through the policies regarding school siting criteria found in the *Future Land Use Element*.
- Policy 1.1.5:** *Existing Playground Facilities and Coordination with the School Board.* The City shall maintain its existing interlocal agreement with the Volusia County School Board regarding the use of existing playground facilities and future facilities at Indian River Elementary.
- Policy 1.1.6:** *Collocating Community Facilities.* The City shall coordinate with the Volusia County School Board when locating new schools in an attempt to collocate community facilities such as parks, libraries and community centers.
- Policy 1.1.7:** *Protection of Natural Resources.* The City shall continue implementing the interlocal agreement with Volusia County regarding the protection of natural resources, especially the Turnbull Hammock Area in the western part of the City.

Policy 1.1.8: ***Defining Recharge Areas.*** The City will actively support and join County and State efforts to define recharge areas and to control the type and intensity of development in these areas so that the City's groundwater resources are protected.

Policy 1.1.9: ***Monitoring Water Quality in the Estuary.*** The City will cooperate on County and State efforts to monitor water quality in the estuary.

Policy 1.1.10: ***Protecting the Quality of Indian River/ Mosquito Lagoon.*** The City shall encourage and participate in intergovernmental management efforts to protect the quality of the Indian River/Mosquito Lagoon.

Objective 1.2: ***Coordination of Planning Activities.*** Provide for on-going coordination of all planning activities mandated by the various elements of the City's *Comprehensive Plan* with the plans of appropriate agencies and commissions.

Policy 1.2.1: ***Acquiring Additional Land and the Turnbull Hammock Area.*** The City shall coordinate with and support the activities of the SJRWMD in pursuing opportunities to acquire additional lands within the environmentally sensitive Turnbull Hammock Area through coordination with the County's land acquisition program.

Policy 1.2.2: ***Rare, Endangered, Threatened Species and Species of Special Concern.*** During the development review process, the City shall assist in the application of and compliance with State and Federal regulations pertaining to endangered and rare species.

Policy 1.2.3: ***Development Adverse Impact to Rare or Endangered Species.*** The City shall consult with the Florida Fish and Wildlife Conservation Commission prior to the issuance of a development approval which would adversely impact rare or endangered species.

Policy 1.2.4: ***Monitoring Air Quality.*** The City will participate in the State's and County's efforts to monitor air quality in the Edgewater area.

Policy 1.2.5: ***Conflict Resolution Management.*** If and when conflicts of purpose among jurisdictions cannot be resolved locally, seek mediation assistance from the East Central Florida Regional Planning Council and/or Volusia County Growth Management Commission. This Policy shall also pertain to the resolution of conflicts involving dredge spoils disposal sites.

Policy 1.2.6: ***Providing Services and Information.*** Provide services and information as needed to any requesting agency to further intergovernmental coordination.

Objective 1.3: ***Proposed Development Impacts.*** Continue to coordinate with Volusia County and FDOT in reviewing the impacts of proposed developments.

Policy 1.3.1: *Drainage System Coordination.* Provide for on-going coordination with Volusia County and the Volusia County Growth Management Commission during the development review process to reduce potential negative impacts in areas of the County that may affect the City’s drainage system.

Policy 1.3.2: *Impacts of Development on the LOS and FDOT Roadways.* On an annual basis, the City shall evaluate the extent of coordination efforts with FDOT and Volusia County regarding the impacts of development on the LOS of County and FDOT roadways.

Policy 1.3.3: *Controlling Access Points and Connections.* The City shall coordinate with FDOT to control the connections and access points along all segments of U.S. 1 per their respective access classifications, consistent with the guidelines established by the FDOT in Rule 14-97 “State Highway System Access Management Classification and Standards”.

Objective 1.4: *Intergovernmental Coordination.* Work closely with the City of New Smyrna Beach and other governmental agencies to identify areas of common interest and to establish coordination between their plans for the provision of services and those of the City.

Policy 1.4.1: *Providing Information on Growth and Development Activities.* The City shall continue to provide information on growth and development activities inside the City which may have implications on the facilities and operations of the government entities involved.

Policy 1.4.2: *Providing Land Use Data to the City of New Smyrna Beach.* On a continuing basis, the City shall provide to the City of New Smyrna Beach and/or the City of Oak Hill copies of all development applications requiring City Council approval that involve property adjacent to New Smyrna Beach and/or Oak Hill in order to obtain comments.

Policy 1.4.3: *Requesting Local Governments to Review Concurrency and Land Use Issues.* The City shall request that adjacent local governments provide the same coordination established in Policies 1.4.1 and 1.4.2 to review concurrency and land use issues with existing comprehensive plans.

Objective 1.5: *SJRWMD’s Water Supply Facility Work Plan.* Work closely with the SJRWMD to update *Water Supply Facility Work Plans* and *Comprehensive Plan* amendments as required.

Policy 1.5.1: *Coordination with SJRWMD’s and Volusia County and Future Water Supply Needs.* The SJRWMD District *Water Supply Plan (DWSP)* addresses the current and future water use, alternative water source projects, and other related issues in order to meet the future water supply needs. The City’s *Water Supply Facilities Work Plan (WSFWP)* coordinates

with the 2005 DWSP with respect to Project # 26 the Volusia County Southeast Service Area Interconnect project. The City will continue to coordinate with the District and Volusia County regarding that project. The City will update its WSWFP and *Comprehensive Plan* as appropriate.

- Policy 1.5.2:** *Maintaining the City's Water Supply Facilities Work Plan.* The City will maintain a *Water Supply Facilities Work Plan (WSFWP)* for a planning period of not less than ten years. The *WSFWP* addresses issues that pertain to water supply facilities and requirements needed to serve current and future development within the City's water service area. The City shall review and update the *WSFWP* at least every five years. Any changes to occur within the first five years of the *WSFWP* shall be included in the annual *Capital Improvements Plan* update.
- Policy 1.5.3:** *Updating the City's Water Supply Facilities Work Plan.* The City will maintain a *WSFWP* that is coordinated with the SJRWMD's DWSP by updating the *Work Plan* and related *Comprehensive Plan* policies within 18 months of an update to the SJRWMD's *District Water Supply Plan (DWSP)* that affects the City.
- Policy 1.5.4:** *Participating in the Development of SJRWMD's District Water Supply Plan.* The City will participate in the development of updates to SJRWMD's DWSP and other water supply development-related initiatives facilitated by SJRWMD that affect the City.
- Policy 1.5.5:** *Developing Alternative Water Sources.* The City will continue its involvement in County-wide water conservation coordination and evaluating and participating in developing alternative water sources pursuant to guidance of the SJRWMD's DWSP.

Objective 1.6: *Joint-Planning Areas.* Coordinate with Volusia County, the Volusia Growth Management Commission and any other jurisdiction as appropriate to establish a more comprehensive and integrated annexation process.

Objective 1.7: *Campus Master Plans.* Recognize a campus master plan prepared pursuant to Section 240.155, Florida Statutes, when such plan includes areas within the City or within the City's Utility Service Area and coordinate with any University or College regarding the provisions of any campus master development agreement.

- Policy 1.7.1:** *Procedures for a Campus Master Plan.* For applicable campus master plans prepared pursuant to Section 240.155, Florida Statutes, the City shall meet with the University or College to establish procedures to recognize a campus master plan and to coordinate regarding the provisions of the campus master development agreement. [9]-5.015 (3)(c)10., F.A.C.]

Objective 1.8: *Siting Facilities of Countywide Significance.* Coordinate with Volusia County regarding the siting of facilities with countywide significance, including locally unwanted land uses.

Policy 1.8.1: *Description of Facilities of Countywide Significance and Locally Unwanted Land Uses.* Facilities of countywide significance include but are not limited to: hospitals, major school facilities and governmental complexes. Locally unwanted land uses include but are not limited to: uses that produce enough traffic, noise, smoke, odor, dust, fumes or vibrations to have an effect on the health and general welfare of the citizens of Edgewater.

Policy 1.8.2: *The Siting of Facilities of Countywide Significance and Locally Unwanted Land Uses.* The City shall provide the County notice and opportunity to comment on the siting of facilities of countywide significance, including locally unwanted land uses. The City shall provide an opportunity for the comments to be addressed in the siting process.

Objective 1.9: *School Board Collaborative Planning.* Coordinate with the Volusia County School Board for collaborative planning purposes, including public school concurrency procedures.

Policy 1.9.1: *School Board Interlocal Agreement.* Review annually the interlocal agreement with the School District of Volusia County to ensure inclusion of:

- Coordination of public school facilities element;
- Review of population projection figures;
- Corroboration on public school facilities siting,
- Infrastructure and safety needs of schools;
- Adoption of level of service standards;
- Review and comment of the public school capital facilities program;
- Definition of the geographic application of school concurrency; the use of schools by the public, including use as emergency shelters; and
- For outlining public school concurrency requirements for future development.

Policy 1.9.2: *Identifying Deficient Levels of Service and Public School Facilities.* The City shall coordinate with the School District of Volusia County to identify deficient Levels of Services for public school facilities, and to mitigate for those deficiencies through the development process when applicable.

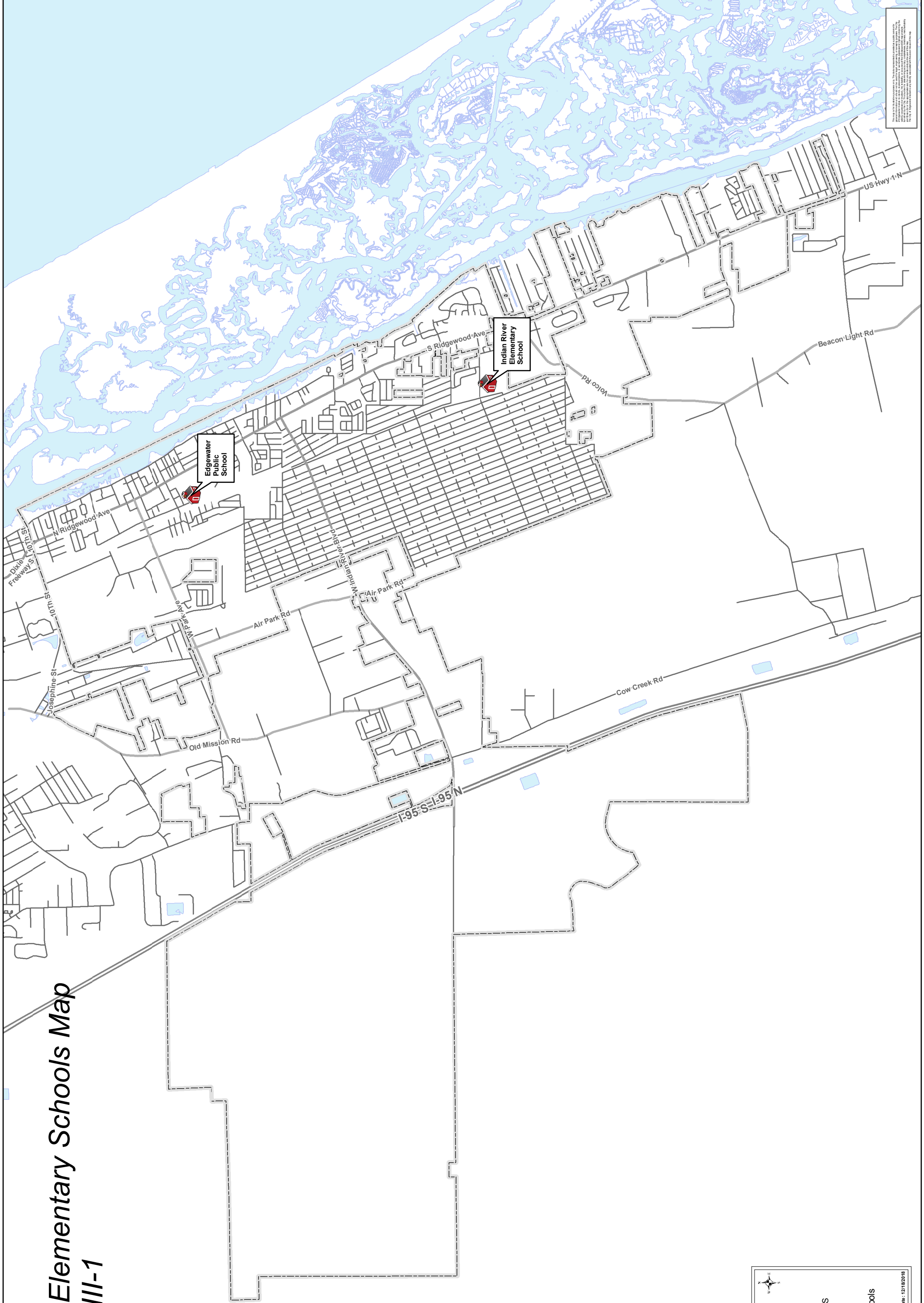
Policy 1.9.3: *Participating in Regularly Scheduled Meetings.* The City shall participate in regularly scheduled joint meetings with all participants identified in the Interlocal Agreement for Coordinated Land Use and Public School Facility Planning.

Objective 1.10: *Population Projections.* Coordinate population projections with Volusia County, Volusia County School Board, River to Sea TPO, and other units of local government providing public facilities and services but not having regulatory authority over the use of land.

Policy 1.10.1: *School Board Coordination and Population Projections.* The City shall meet annually or as needed with the Volusia County School Board to discuss population projections used in the City's *Comprehensive Plan* in order to allow the School Board to consider City growth and development projections and the City to consider School Board enrollment projections. The population projections shall address but not be limited to the location, timing and amount of school students.

Policy 1.10.2: *River to Sea TPO Coordination and Population Projections.* The City shall meet annually or as needed with the River to Sea Transportation Planning Organization to discuss population projections and consider expected growth shown in the City's *Comprehensive Plan*.

Public Elementary Schools Map Map VIII-1



Map VIII-1 is a public information map. It is not intended to be used as a legal document. The information on this map is for informational purposes only. The information on this map is not intended to be used as a legal document. The information on this map is for informational purposes only.



LOCATION OF
ELEMENTARY SCHOOLS

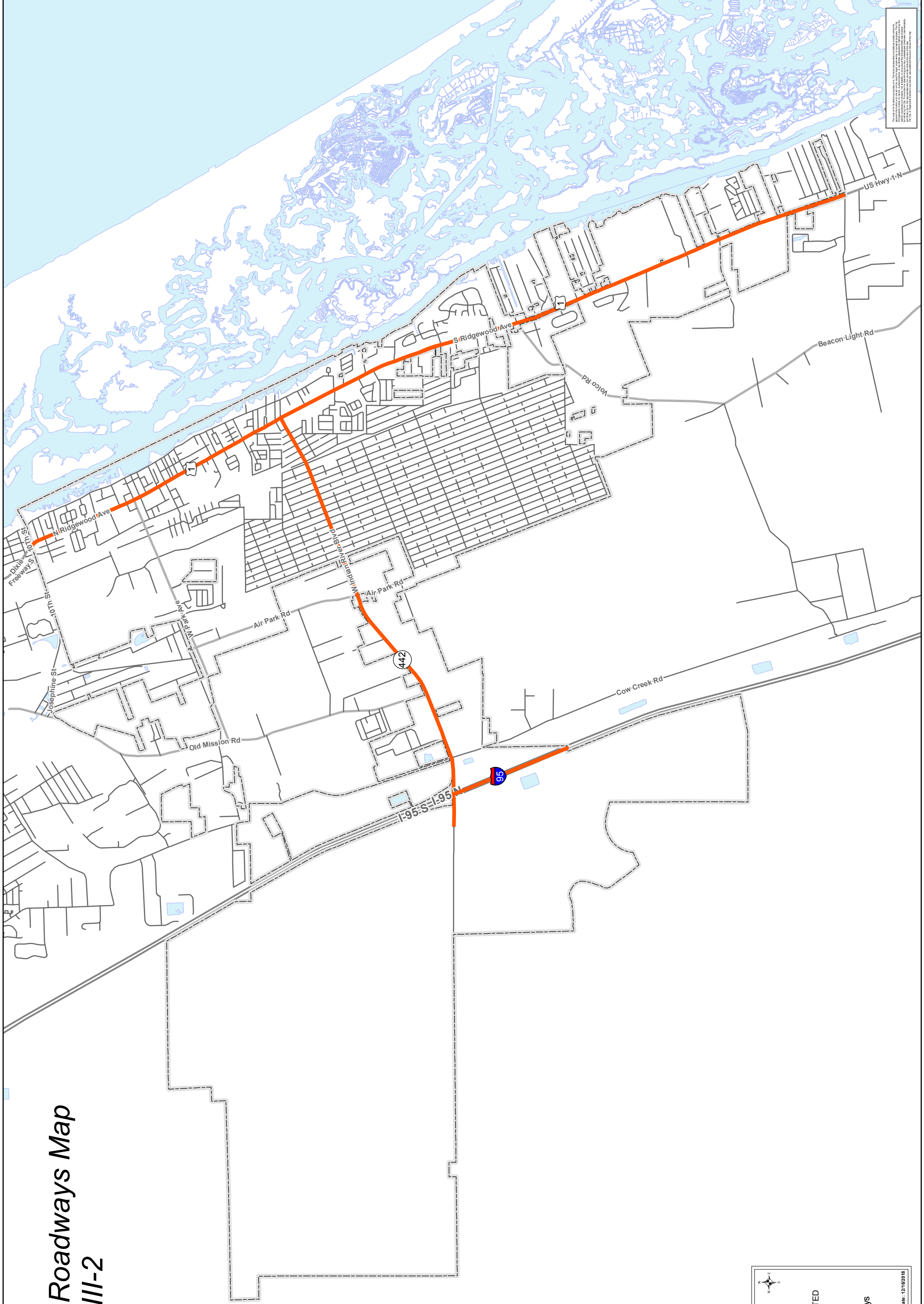
City Limits


Elementary Schools

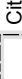

1 inch = 4000 feet
Scale when Printed at 11 X 17

Date: 12/18/2018


FDOT Roadways Map Map VIII-2




FDOT ROADWAYS LOCATED
WITHIN EDGEWATER

 City Limits
 FDOT Roadways

1 inch = 4000 feet
Scale when Printed at 11 X 17
Date: 12/18/2018



Edgewater is a registered trademark of Edgewater, Inc. All other trademarks are the property of their respective owners. This map is for informational purposes only and does not constitute an offer of insurance or any other financial product. For more information, please contact your agent or Edgewater at 1-800-453-4534. © 2018 Edgewater, Inc.