

**Comprehensive Plan**

# Chapter 7

## Recreation and Open Space Element

**Goals, Objectives, and Policies**

**City of Edgewater  
Ordinance No. 2019-O-06**



**GOALS, OBJECTIVES AND POLICIES**

**GOAL 1:** Provide sufficient recreational parks, facilities and open space areas to meet the needs of the community and its visitors that satisfies the health, safety and welfare of all. This includes all groups such as handicapped, elderly and pre-school age children.

**Objective 1.1:** *Level of Service.* Ensure adequate lands are provided for public parks and recreational facilities, the City shall utilize level-of-service (LOS) standards and other criteria specific to population, park size and location.

**Policy 1.1.1:** *Parks Level of Service Standard.* The LOS standard for parks within Edgewater shall be as follows:

- Overall Parkland: Five acres per 1,000 residents. This standard includes both passive open space and developed park areas.

**Policy 1.1.2:** *Location and Need for Parks.* The City shall utilize the following criteria for determining the location and need for parklands:

- Regional Park – Large resource based area that serves two or more communities or counties and is usually located within a thirty (30) to sixty (60)-minute driving distance of the residents they serve. Suggested park size is 250 acres minimum, or 20 acres per 1,000 population served.
- Community Park - A facility designed to serve the needs of more than one neighborhood. This facility type shall serve a minimum of 8,000 City residents and is located no greater than three (3) miles from those residents. The suggested minimum size of any new community parks is five (5) acres.
- Neighborhood Park - A facility that serves an entire neighborhood or area with a minimum of 2,000 city residents and is located no greater than three-quarters (3/4) of a mile from those residents. The suggested minimum size of a neighborhood park is two (2) acres.

**Policy 1.1.3:** *Recreational Facilities Population Guidelines.* The City shall utilize the following standards as a guide for recreation facilities:

Facility	Standard per 1,000 Population
Activities Center	1/ 15,000
Baseball/Softball	1/ 4,000
Basketball Courts	1/ 5,000
Bicycle/Pedestrian Path	1 mile/4,000
Boat Ramps	1/ 4,700
Pickleball	1/ 30,000
Community Center	1/ 30,000
Fitness Trails	1/14,000
Gymnasium	N/A
Multi-purpose/Soccer	1/ 4,000

Racquetball/Handball	1/ 4,000
Shuffleboard	1/ 1,500
Tennis Courts	1/ 3,500
Volleyball	1/ 5,000

**Objective 1.2:** *Population Needs.* Provide a system of parks and recreation facilities meeting the needs of the population by 2030.

**Policy 1.2.1:** *Preserving and Maintaining Existing Park and Recreation Facilities.* Preserve and maintain existing parks and recreation facilities through the use of adequate operating budgets and proper management techniques.

**Policy 1.2.2:** *Meeting the Adopted Level of Service Standard.* The City will meet the adopted LOS standard for recreational facilities of 5 acres of parks per 1,000 residents.

**Objective 1.3:** *Protection of Open Spaces.* Protect existing City lands designated as open space from incompatible land uses and pursue acquisition of additional needed open space based on level-of-service standards.

**Policy 1.3.1:** *Protecting Designated Open Spaces.* The City shall continue to enforce the standards established in the Land Development Code regarding the protection of designated open spaces. These standards shall be used to review proposed development in and adjacent to designated open space areas.

**Policy 1.3.2:** *Acquiring Open Space and the Indian River.* The City shall continue to acquire a minimum of 1 acre of open space area located on the Indian River and list this project on the table of proposed open space acquisitions.

**Objective 1.4:** *Multi-modal Facilities.* Ensure all public recreation facilities shall have operational automobile, bicycle and pedestrian access facilities.

**Policy 1.4.1:** *Evaluating Needed Parking Spaces and Bicycle Racks.* The City shall continue to evaluate the amount of parking spaces needed at parks, where feasible, and bicycle racks needed at all recreational sites to determine the number of facilities needed to support the existing needs and future) population. This inventory shall be updated annually so developers of projects near recreational facilities are presented with opportunities to help the City provide these facilities.

**Policy 1.4.2:** *Design of New Public Parks and Facilities.* New public parks and facilities shall be designed and constructed with access-ways which are compatible with the character and quality of natural resources found on site.

**Policy 1.4.3:** *Maintaining and Updating the Bicycle/Pedestrian Master Plan.* The City shall continue to maintain and update the City's *Bicycle/Pedestrian Master Plan* for the entire City. At a minimum, this *Plan* shall identify the existing and proposed pedestrian and bicycle resources in the City. The City shall coordinate with the City of New Smyrna Beach, the City of Oak Hill and Volusia County to identify potential trailheads and destinations and provide a prioritized list of future improvements.

**Objective 1.5:** *Facility Accessibility.* Ensure all new public parks and recreational facilities shall be developed to provide full accessibility to the handicapped, elderly and youth.

**Policy 1.5.1:** *Handicap Parking Spaces and New Parks and Recreational Facilities.* The City shall provide handicapped parking spaces pursuant to ADA requirements and barrier-free access to all new public parks and recreation facilities that will contain parking.

**Policy 1.5.2:** *Design of Public Recreation Facilities.* All public recreation facilities shall be designed as barrier-free as possible to accommodate accessibility by the elderly and handicapped.

**Policy 1.5.3:** *Rights-of-way or Easements and Access to Parks.* The City shall acquire and develop rights-of-way or easements for access to parks and facilities which are determined to be needed.

**Policy 1.5.4:** *Design of Pedestrian Access Ways.* Pedestrian access ways, to the maximum extent possible, shall be designed to accommodate people with disabilities.

**Objective 1.6:** *Public Waterways Accessibility.* Increase the accessibility to public waterways, particularly the Indian River.

**Policy 1.6.1:** *Securing Access Points to the Intracoastal Waterway.* The City shall attempt to secure additional access points along the Intracoastal Waterway through the most economical methods; grants, impact fees and general revenues.

**Policy 1.6.2:** *Access Points to the Indian River.* Access points to the Indian River shall be featured on the *Open Space Parks Map* of this *Element* to ensure the protection of these areas.

**Policy 1.6.3:** *Purchasing of Land for Water Access.* The City shall coordinate the purchasing of land for water access with the City of New Smyrna Beach and/or Oak Hill .

**Policy 1.6.4:** *Purchasing Property between Riverside Drive and U.S. 1.* The City shall continue to coordinate efforts to purchase property between Riverside Drive and U.S. 1 to increase downtown parking so that the residents and visitors of Edgewater can further access the Indian River.

**Policy 1.6.5:** *Informing the Public and Available Parking Areas and Access Points.* The City shall continue to inform the public of the available parking areas and access points with items such as maps and signs to increase the accessibility of the Indian River.

**Objective 1.7:** *New Facility Safety.* Ensure new public parks and recreational facilities shall be developed to include safety provisions to reduce the risk of injury by accident.

**Policy 1.7.1:** *Installation of Lighting, Rails, Fences and Information Signage.* Lighting, rails, fences and information signage shall be installed at all new public parks and recreation facilities as needed.

**Policy 1.7.2:** *Design of New Public Parks and Recreation Facilities.* All new parks and recreation facilities shall be designed so that children's play areas are at least 100 ft. from vehicular access points or are separated by a fence.

**Objective 1.8:** *Intergovernmental and Private Organizations Coordination.* Coordinate and improve efforts with all levels of government, public agencies and the private sector to provide recreational opportunities.

**Policy 1.8.1:** *Golf Course Facilities.* The City shall coordinate with any developers of a golf course within the City limits to provide golf facilities to the public.

**Policy 1.8.2:** *Providing Parks.* The City shall continue to require all new residential subdivisions to provide parks based on the recommended guidelines established in Policy 1.1.3 of this *Element* for each park and the projected population and size of the proposed development.

**Policy 1.8.3:** *Maintaining Interlocal Relationships and Agreements.* Maintain existing relationships and interlocal agreements between the City of Edgewater Parks and Recreation Department, Volusia County School Board, Volusia County Recreation Department, and the New Smyrna Beach Recreation Department.

**Policy 1.8.4:** *Public Input on Parks and Recreation Issues.* Continue to utilize public input on parks and recreation issues and help coordinate public and private efforts to provide recreational opportunities through the City of Edgewater Recreation and Cultural Services Board.

**Policy 1.8.5:** *Acquiring Additional Land and the Turnbull Hammock Area.* The City shall support efforts of the SJRWMD and other agencies to acquire additional lands within the Turnbull Hammock area.

**Policy 1.8.6:** *Incentives for Developers Providing Recreational Facilities.* The City shall research and provide incentives for developers to provide recreation facilities for their projects such as in-lieu-of fees, and direct site transfers where applicable.

**Objective 1.9:** *Maintaining Open Space.* Maintain a sufficient amount of open space to provide a harmonious balance between the requirements of continuing urbanization and spatial needs of an increasing population as identified in this *Element* through the year 2040.

**Policy 1.9.1:** *Maintaining Land Development Regulations and Recreational Facilities.* Consistent with the time frames delineated by Chapter 163, Florida Statutes, the City shall continue to provide Land Development Regulations that provide specific open space standards and definitions, and address parameters of tree protection, landscape and signage in relationship to utilization of such open space.

**Policy 1.9.2:** *Open Space and Impervious Surface Ratio.* The City shall continue to utilize specific open space and impervious surface ratio criteria as part of its development review process.

**Policy 1.9.3:** *Encouraging Planned Unit Development Type Projects.* The City shall encourage the use of Planned Unit Development type projects to promote the use of open space as buffers between various land uses.

**Policy 1.9.4:** *Funding Programs.* The City staff will continually investigate and utilize State and Federal funding programs to enhance and expand recreation and open space facilities.

**Policy 1.9.5:** *Open Space and Neighborhood and Vest Pocket/Tot Lot Parks.* The City shall utilize the concept and use of open space as part of the satellite system of neighborhood and vest pocket/tot lot parks, i.e. an improved and equipped play area for small children.

**Objective 1.10:** *Access Management Plan.* Adopt an access management plan to provide policy, plans and regulations regarding the existing, proposed public access points, docks and boat slips along the Indian River..

**Policy 1.10.1:** *Access Management Plan Requirements.* The access management plan shall include, at minimum:

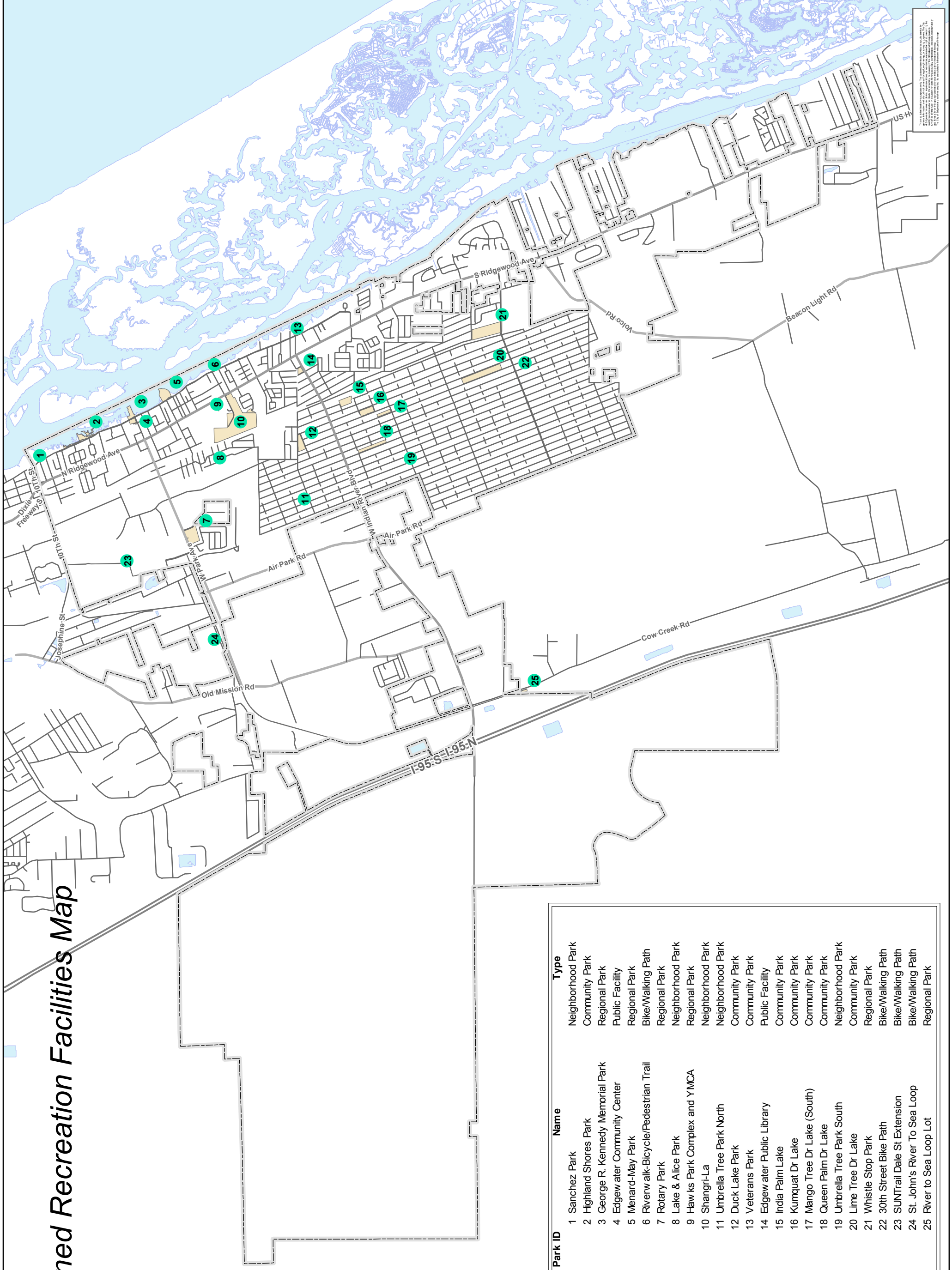
- guidelines for vehicular on-site circulation systems, docking slips, fishing piers and boat ramps;
- incentives for developers that donate land along the Indian River to enhance the public access;
- strategies for the City to acquire various grants for purchasing land along the Indian River;
- the existing and proposed locations of public access points; and
- strategies to promote and educate the public regarding the existing and proposed public access points.






# Publicly Owned Recreation Facilities Map

## Map VII-1



Park ID	Name	Type
1	Sanchez Park	Neighborhood Park
2	Highland Shores Park	Community Park
3	George R. Kennedy Memorial Park	Regional Park
4	Edgewater Community Center	Public Facility
5	Menard-May Park	Regional Park
6	Riverwalk-Bicyclist/Pedestrian Trail	Bike/Walking Path
7	Rotary Park	Regional Park
8	Lake & Alice Park	Neighborhood Park
9	Hawks Park Complex and YMCA	Regional Park
10	Shangri-La	Neighborhood Park
11	Umbrella Tree Park North	Neighborhood Park
12	Duck Lake Park	Community Park
13	Veterans Park	Community Park
14	Edgewater Public Library	Public Facility
15	India Palm Lake	Community Park
16	Kumquat Dr Lake	Community Park
17	Mango Tree Dr Lake (South)	Community Park
18	Queen Palm Dr Lake	Community Park
19	Umbrella Tree Park South	Neighborhood Park
20	Lime Tree Dr Lake	Community Park
21	Whistle Stop Park	Regional Park
22	30th Street Bike Path	Bike/Walking Path
23	SUNTrail Dale St Extension	Bike/Walking Path
24	St. John's River To Sea Loop	Bike/Walking Path
25	River to Sea Loop Lot	Regional Park



LOCATION OF EXISTING PUBLICLY OWNED RECREATION FACILITIES

City Limits

Recreation Facilities

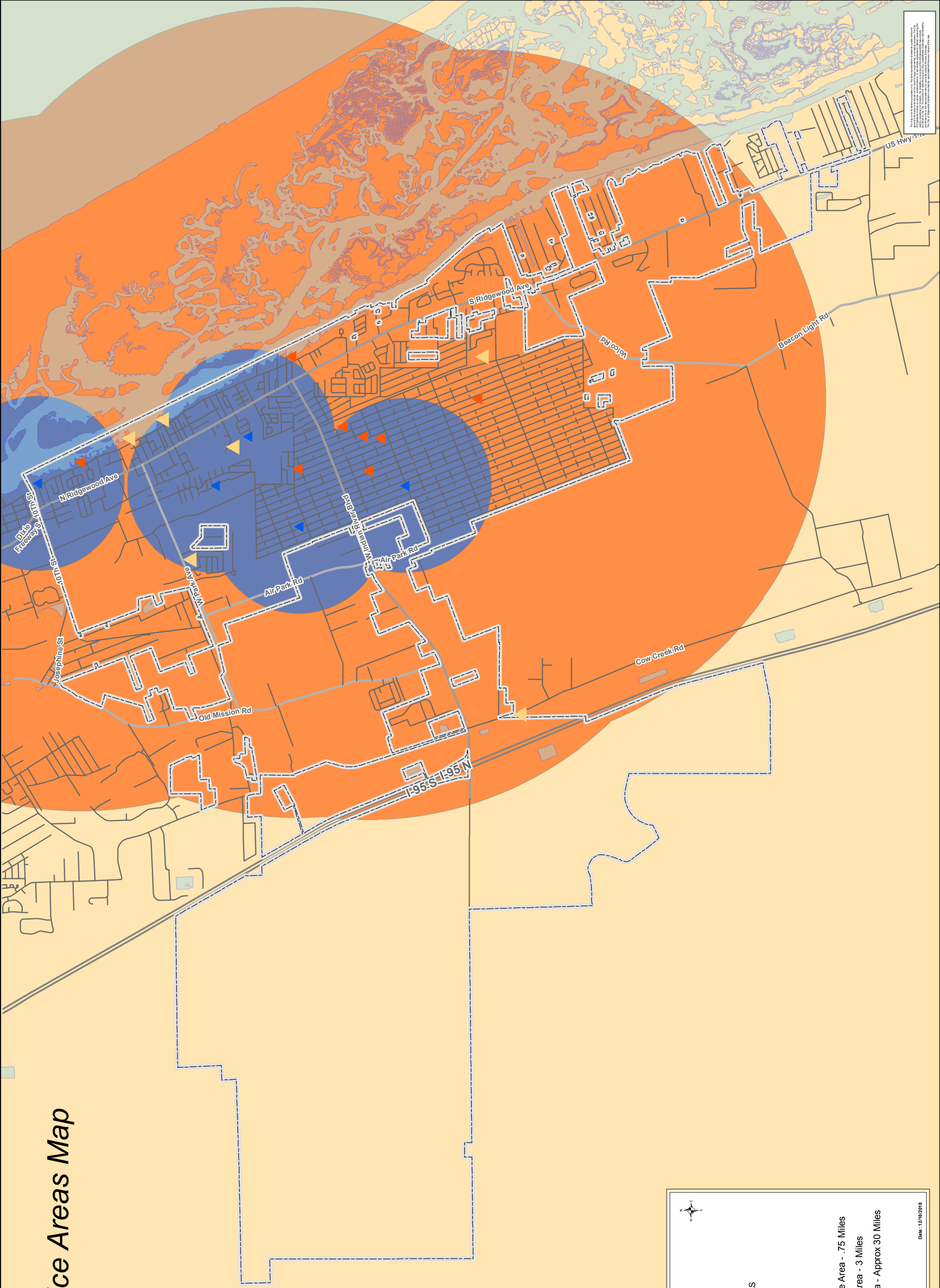
1 inch = 4000 feet  
Scale when Printed at 11" X 17"

Date: 12/20/2018

This map was prepared by the City of Edgewater, Florida, and is intended to provide information only. It is not intended to be used as a legal document. The City of Edgewater, Florida, is not responsible for any errors or omissions on this map. The City of Edgewater, Florida, is not responsible for any damages or losses resulting from the use of this map. The City of Edgewater, Florida, is not responsible for any damages or losses resulting from the use of this map.

# Park Service Areas Map

## Map VII-2



Map VII-2  
 Date: 12/18/2018  
 Scale: 1 inch = 4000 feet



**PARK SERVICE AREAS**

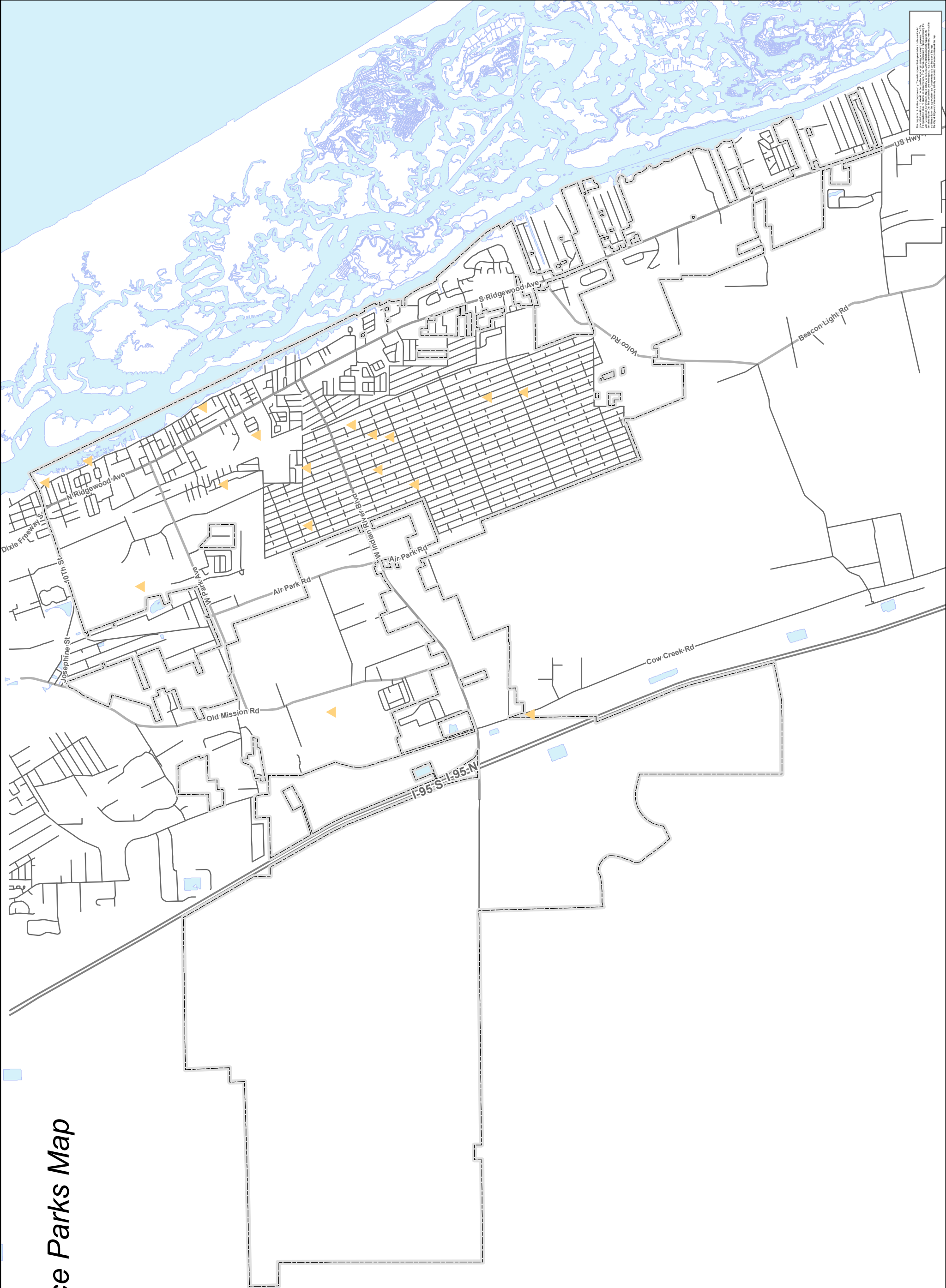
- City Limits
- ▶ Neighborhood Park
- ▶ Community Park
- ▶ Regional Park
- Neighborhood Park Service Area - .75 Miles
- Community Park Service Area - 3 Miles
- Regional Park Service Area - Approx 30 Miles


1 inch = 4000 feet  
 Scale when Printed at 11"x 17"

Date: 12/18/2018





# Open Space Parks Map Map VII-3




  
EDGEWATER

LOCATION OF OPEN SPACE PARKS

-  City Limits
-  Open Space Parks

1 inch = 4000 feet  
Scale when Printed at 11 X 17

Date: 12/18/2018



Map VII-3 is a public map of the City of Edgewater, Maryland. It is intended for informational purposes only and does not constitute a contract or any other legal instrument. The City of Edgewater is not responsible for any errors or omissions on this map. The City of Edgewater reserves the right to modify this map at any time without notice.