

**Comprehensive Plan**

# Chapter 4

## Natural Groundwater & Aquifer Recharge Sub-Element

**Goals, Objectives, and Policies**



**GOAL 1:** The City will protect and maintain the functions of natural groundwater aquifer recharge areas within the City's existing and future service areas.

**Objective 1.1:** *Intergovernmental Coordination.* Coordinate with the St. John's Water Management District (SJRWMD), Volusia County and State agencies to protect and enhance recharge capabilities of areas within the City's current and future service areas.

**Policy 1.1.1:** *Delineating Areas of Highest Recharge.* The City will work in cooperation with the SJRWMD and Volusia County to delineate areas of highest recharge potential in the City's current and future service areas.

**Policy 1.1.2:** *Designating Recharge Areas as Conservation Areas.* The City shall designate the areas of greatest recharge potential as conservation areas on the City's *Future Land Use Map (FLUM)*.

**Objective 1.2:** *Protection of Aquifer Recharge.* Require the protection of aquifer recharge areas through development and implementation of appropriate regulations.

**Policy 1.2.1:** *Stormwater Runoff to Enhance Recharge.* The City's Land Development Code provisions related to retaining stormwater runoff to enhance recharge shall be enforced and updated from time to time as data is obtained and under guidance and rules of the SJRWMD.

**Policy 1.2.2:** *Promoting Stormwater Runoff Retention.* The City will promote the use of stormwater runoff retention for the purpose of maximizing groundwater aquifer recharge by strictly enforcing the existing Land Development Code.

**Policy 1.2.3:** *Regional Aquifer Recharge Protection.* The City will coordinate with the SJRWMD, Volusia County and State agencies to achieve regional aquifer recharge protection objectives by enacting ordinances which are consistent with County and State standards.

**Policy 1.2.4:** *Aquifer Recharge Protection and Wellfield Protection.* The City will continue to achieve regional aquifer recharge protection objectives by enforcing the Land Development Code provisions regarding wellfield protection and updating it from time to time as data is obtained and under guidance and rules of the SJRWMD and Florida Department of Environmental Protection (FDEP).

**Policy 1.2.5:** *Restricting the use of Septic Tank/Drainfield Systems.* The City will continue to achieve regional aquifer recharge protection objectives by restricting the use of septic tank/drainfield individual sewage treatment systems.

**Policy 1.2.6:** *Disposal of Hazardous Wastes.* The City shall continue to enforce County, State and Federal regulations regarding disposal of hazardous waste materials.

**Policy 1.2.7:** *Prime or High Recharge Areas.* Prime (or high) aquifer recharge areas appropriate for development shall be developed so as to continue to maintain

pre-development net retention and new stormwater management projects in existing developed areas should be designed in a fashion that enhances aquifer recharge.

**Policy 1.2.8:** *Eliminating Sources of Potential Sources of Groundwater Pollution.* In an effort to eliminate potential sources of groundwater pollution, the City shall coordinate with the County Health Department to compile a listing of all known and suspected underground storage tanks, and to require abandoned or leaking tanks to be removed, repaired, or otherwise neutralized by the land owner at the time of property development, redevelopment, or remodeling.

**Objective 1.3:** *Protecting the Aquifer.* Continue to protect the aquifer by reducing the growth in demands for aquifer water.

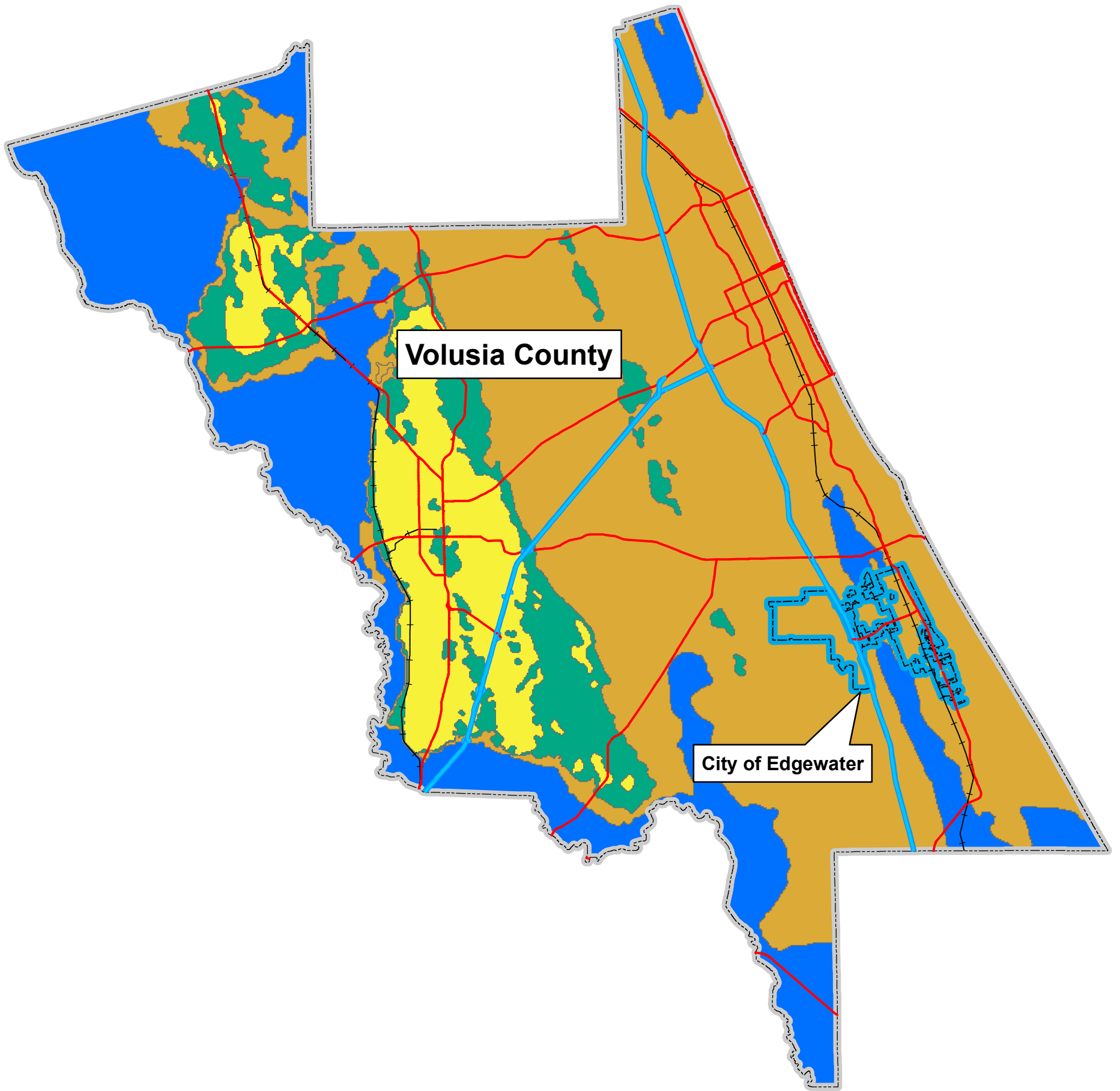
**Policy 1.3.1:** *Providing Reclaimed Water.* The City shall continue to provide for reclaimed water production at its wastewater treatment plants and the development of infrastructure to store and deliver it for non-potable uses such as irrigation.

**Policy 1.3.2:** *Seeking Alternative Water Supplies.* The City shall continue to seek alternative water supplies such as stormwater reuse and brackish water.

**Policy 1.3.3:** *Developing Additional Users.* The City shall continue to develop additional users for non-potable water supplies by converting existing users of potable water and private wells.

# Aquifer Recharge Areas Map

## Map 1



Volusia County

City of Edgewater



AQUIFER RECHARGE AREAS  
IN VOLUSIA COUNTY

City Limits

**Recharge Range**

Low

Medium

High

Discharge



1 inch = 30000 feet  
Scale when Printed at 11 X 17

Date: 12/7/2018

This map is for illustrative purposes only. The data represents a public service for general informational and should not be used for legal, engineering, or planning purposes. The City of Edgewater makes no claim, representation, or warranty regarding the accuracy, completeness, or timeliness of the data. The City of Edgewater is not responsible for any errors or omissions in this map. The City of Edgewater assumes no liability whatsoever for any use of this map.