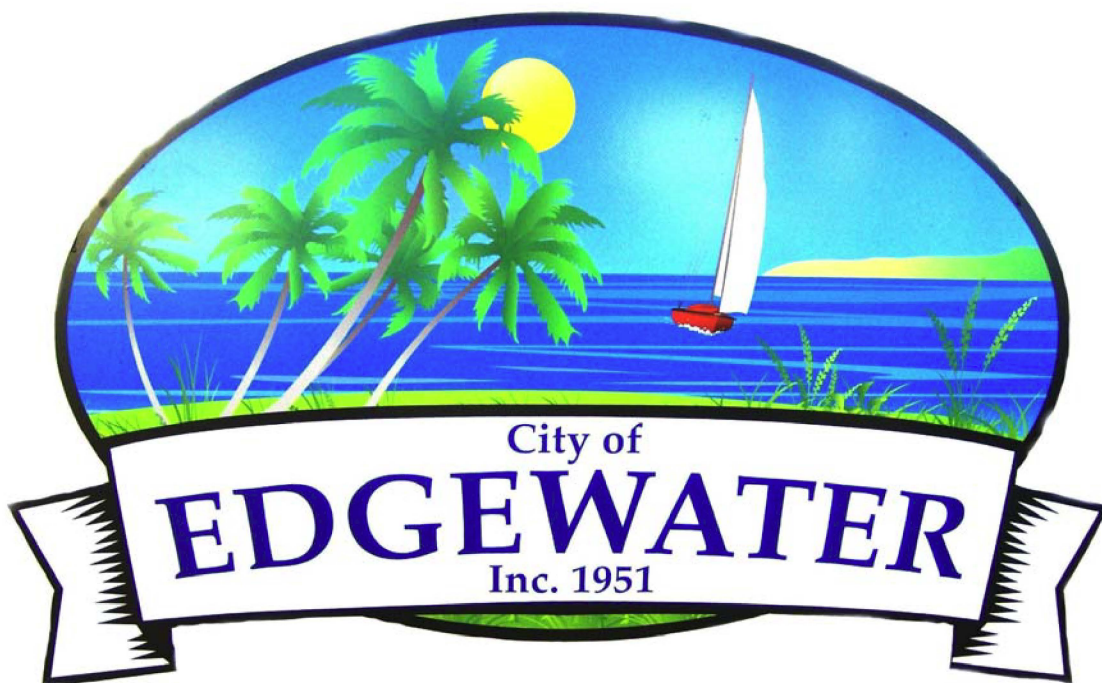
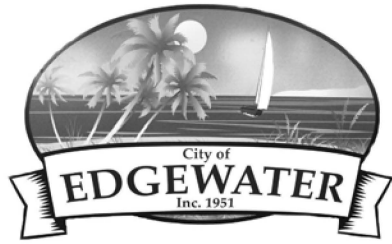


# The City of Edgewater



***STANDARD CONSTRUCTION DETAILS***



# CITY OF EDGEWATER

## STANDARD CONSTRUCTION DETAILS

CITY OF EDGEWATER  
DEPARTMENT OF ENVIRONMENTAL SERVICES  
409 MANGO TREE DRIVE  
EDGEWATER, FLORIDA 32132  
TELEPHONE (386) 424-2476  
FAX (386) 424-2480



## INDEX

### SEWER DETAILS

S-1	STANDARD MANHOLE DETAIL
S-2	SANITARY SEWER COVER AND GENERAL NOTES
S-3	SHALLOW MANHOLE
S-4	OUTSIDE DROP MANHOLE (STANDARD NEW CONSTRUCTION)
S-5	OUTSIDE DROP MANHOLE (STANDARD)
S-6	OUTSIDE DROP MANHOLE DETAIL
S-7	INSIDE DROP MANHOLE DETAIL FOR RETROFIT AND SPECIAL CONDITIONS ONLY
S-8	RUBBER BOOT AND PRECAST JOINT CONNECTION DETAIL
S-9	SEWER LINE UTILITY CROSSING DETAIL
S-10	SEWER LATERAL DETAIL (SINGLE 4" RESIDENTIAL)(SINGLE 6" COMMERCIAL)
S-11	SEWER LATERAL DETAIL (DOUBLE 6" RESIDENTIAL)
S-12	CLEANOUT DETAIL
S-13	LOCATOR TAPE INSTALLATION FOR SEWER, WATER AND RECLAIMED WATER PIPELINES
S-14	SEWER CONDUIT CROSSING
S-15	TYPICAL LIFT STATION SITE PLAN
S-16	LIFT STATION POTABLE WATER SERVICE
S-17	LIFT STATION WET WELL SECTION (SUBMERSIBLE)
S-18	LIFT STATION PLAN VIEW (SUBMERSIBLE)
S-19	LIFT STATION WET WELL DESIGN AND CONSTRUCTION NOTES (NON-SUBMERSIBLE)
S-20	LIFT STATION WET WELL SECTION (NON-SUBMERSIBLE)
S-20A	LIFT STATION EMERGENCY PUMP CONNECTION
S-21	LIFT STATION WET WELL DESIGN AND CONSTRUCTION NOTES (NON-SUBMERSIBLE)
S-22	PACKAGED LIFT STATION ELECTRICAL EQUIPMENT RACK
S-22A	PACKAGED LIFT STATION ELECTRICAL PANEL SCHEMATIC
S-22B	PACKAGED LIFT STATION ELECTRICAL PANEL SCHEMATIC
S-22C	UNITARY SEWAGE PUMP STATION DETAIL
S-22D	PACKAGED LIFT STATION ELECTRICAL NOTES
S-23	SANITARY SEWER DESIGN AND CONSTRUCTION NOTES
S-24	SANITARY SEWER DESIGN AND CONSTRUCTION NOTES
S-25	SANITARY SEWER DESIGN AND CONSTRUCTION NOTES
S-26	SANITARY SEWER DESIGN AND CONSTRUCTION NOTES
S-27	SANITARY SEWER FORCE MAIN VALVE AND VALVE BOX
S-28	TYPE "A" BEDDING AND TRENCH DETAIL
S-29	TYPE "B" BEDDING AND TRENCH DETAIL
S-30	SANITARY SEWER DOUBLE MANHOLE COVER
S-31	PUMP STATION BACKUP GENERATOR



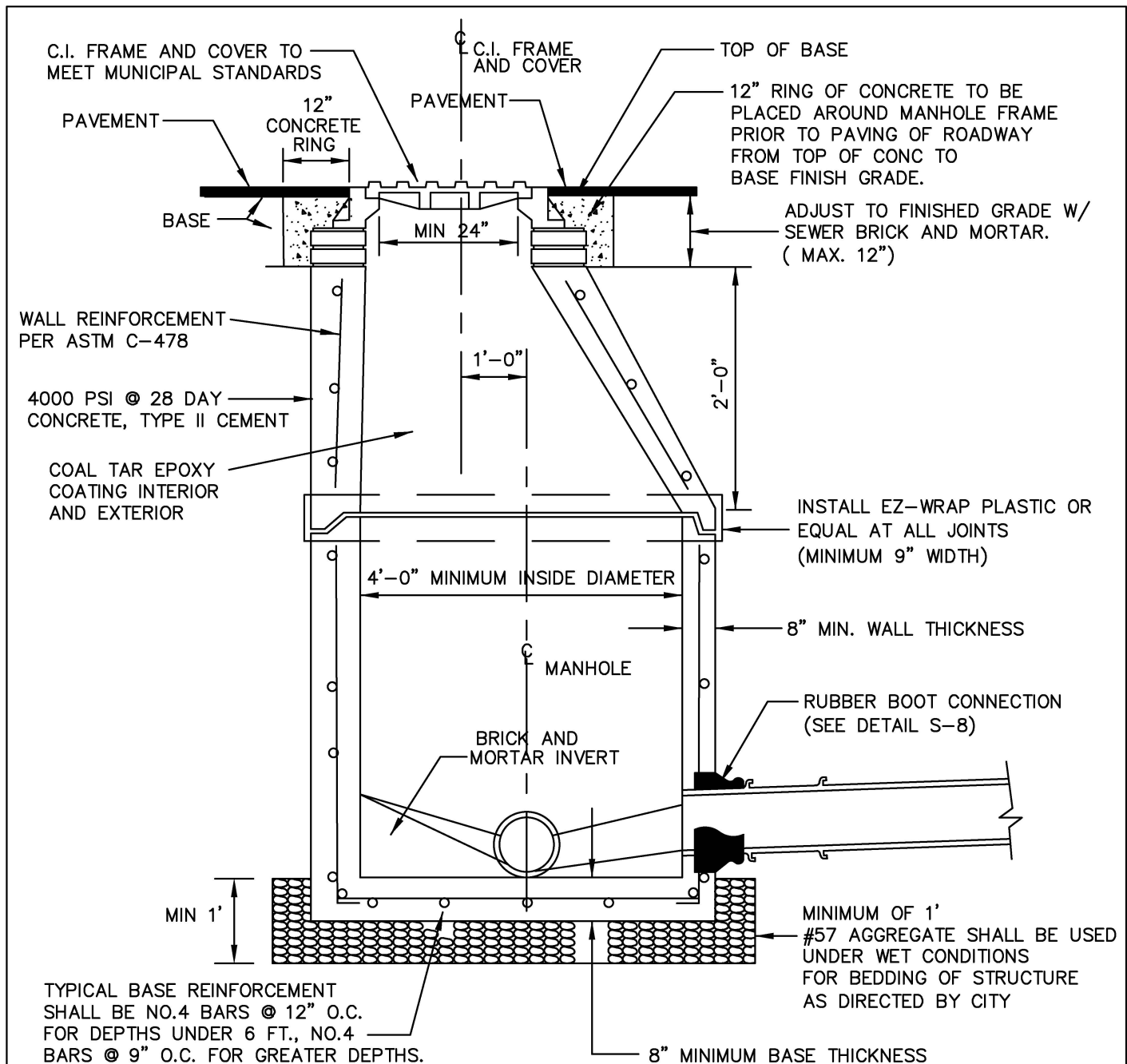
### STANDARD CONSTRUCTION DETAIL INDEX SEWER DETAILS

FILE NAME:

SEWINDX.DWG

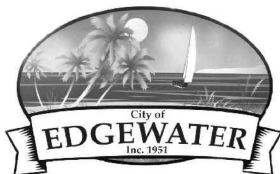
DETAIL REF:

INDEX



#### NOTES:

1. ON TRANSITIONS BETWEEN LARGER DIAMETER AND SMALLER SEWER COLLECTORS, OUTVERTS OF SEWERS SHALL BE MATCHED.
2. NON-PENETRATING PICK-HOLES IN ALL CONCRETE SECTIONS.
3. USE FARBERTITE BITUMASTIC SEALER BETWEEN SECTIONS OF MANHOLES.
4. 0.1' - DROP ACROSS MANHOLE TYP.
5. ALL MANHOLE TROUGHS AND BENCHES ARE TO BE EPOXY PAINTED BEFORE FINAL INSPECTION.



## STANDARD CONSTRUCTION DETAIL STANDARD MANHOLE DETAIL

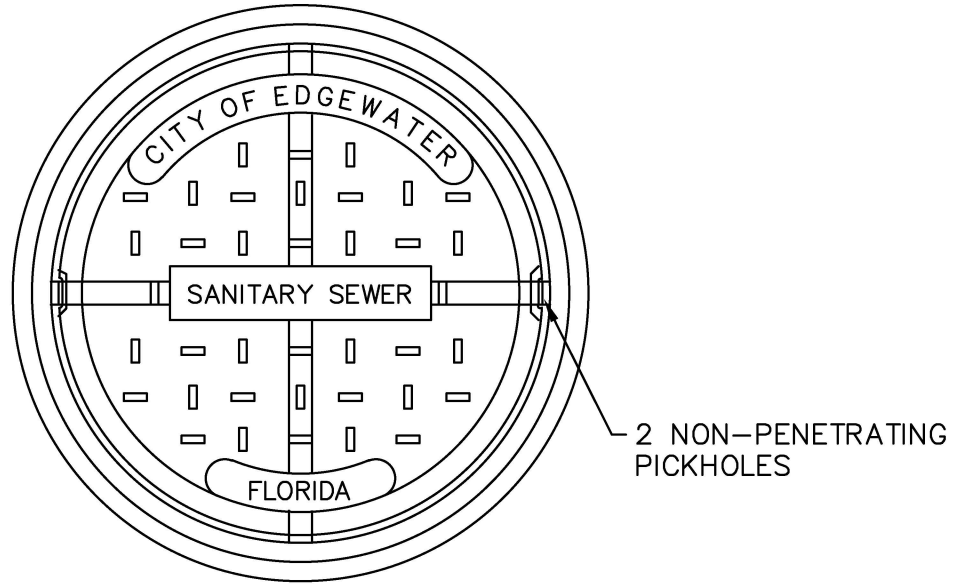
FILE NAME:

EW\_S1.DWG

DETAIL REF:

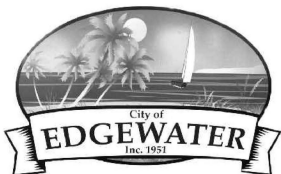
S-1

USF No. 117-BL-ORS  
 FRAME WT = 85 LBS.  
 COVER WT = 125 LBS.



NOTES:

1. CEMENT USED IN PRECAST CONCRETE MIX SHALL BE TYPE II, ACID RESISTANT AND SULFIDE RESISTANT CONCRETE.
2. MORTAR TO CONTAIN "HYDRATITE", OR APPROVED EQUAL, TO PREVENT SHRINKAGE.
3. SUB-GRADE BENEATH MANHOLES SHALL BE UNDISTURBED GRANULAR UNSATURATED SOIL. No. 57 AGGREGATE STONE SHALL BE USED IN WET CONDITIONS AND/OR WHERE UNSUITABLE MATERIAL IS ENCOUNTERED.
4. ALL SEWER LINES SHALL BE VIDEOTAPED WITH "PAN AND TILT" CAMERA AND COPIES OF VIDEOS SUPPLIED TO THE ENVIRONMENTAL SERVICES DEPT. THE CITY MAY REQUIRE ADDITIONAL VIDEO TAPING, VIDEO TAPING OF LATERALS, AND/OR INFILTRATION/EXFILTRATION TESTS IF DEFECTS ARE APPARENT OR WORKMANSHIP IS QUESTIONABLE.
5. UNLESS DETAILED PLANS SHOW OTHERWISE, ALL MANHOLE RING AND COVER CASTINGS IN PAVED AREAS ARE TO BE ADJUSTED TO FINAL GRADE, SEALED AND SECURED IN PLACE WITH A CONCRETE COLLAR AFTER THE ROAD BASE IS PLACED AND JUST PRIOR TO PLACEMENT OF ASPHALT WEARING SURFACE.
6. CONTRACTOR SHALL PROVIDE THICKER MANHOLE WALLS AND BASES AS REQUIRED TO PREVENT FLOTATION BASED ON HISTORIC HIGH GROUND WATER TABLE ELEVATIONS AS DETERMINED USING ACCEPTED ENGINEERING PRACTICES AND/OR APPROVED BY ENVIRONMENTAL SERVICES DEPT.
7. CONCRETE COLLAR AROUND MANHOLE FRAME IS REQUIRED IN PAVED AREAS ONLY.
8. SHOP DRAWINGS FOR ALL STRUCTURES SHALL BE SUBMITTED TO AND APPROVED BY THE DESIGN ENGINEER PRIOR TO INSTALLATION WITH TWO COPIES FORWARDED BY THE DESIGN ENGINEER TO THE CITY.
9. TWO (2) COATS OF BITUMASTIC COATING INSIDE: 16 MIL
10. ONE (1) COAT OF BITUMASTIC COATING OUTSIDE: 8 MIL
11. FRAME AND COVER TO BE USF #117-BL-ORS .
12. NO BUG HOLES OR HONEYCOMB WILL BE ACCEPTED.
13. ENDS OF SECTION SHALL FIT FLUSH TOGETHER
14. SEDIMENTATION BOWLS REQUIRED FOR ALL NEW MANHOLES AND REHABILITATION STRUCTURES. RAINGUARD OR APPROVED EQUAL.



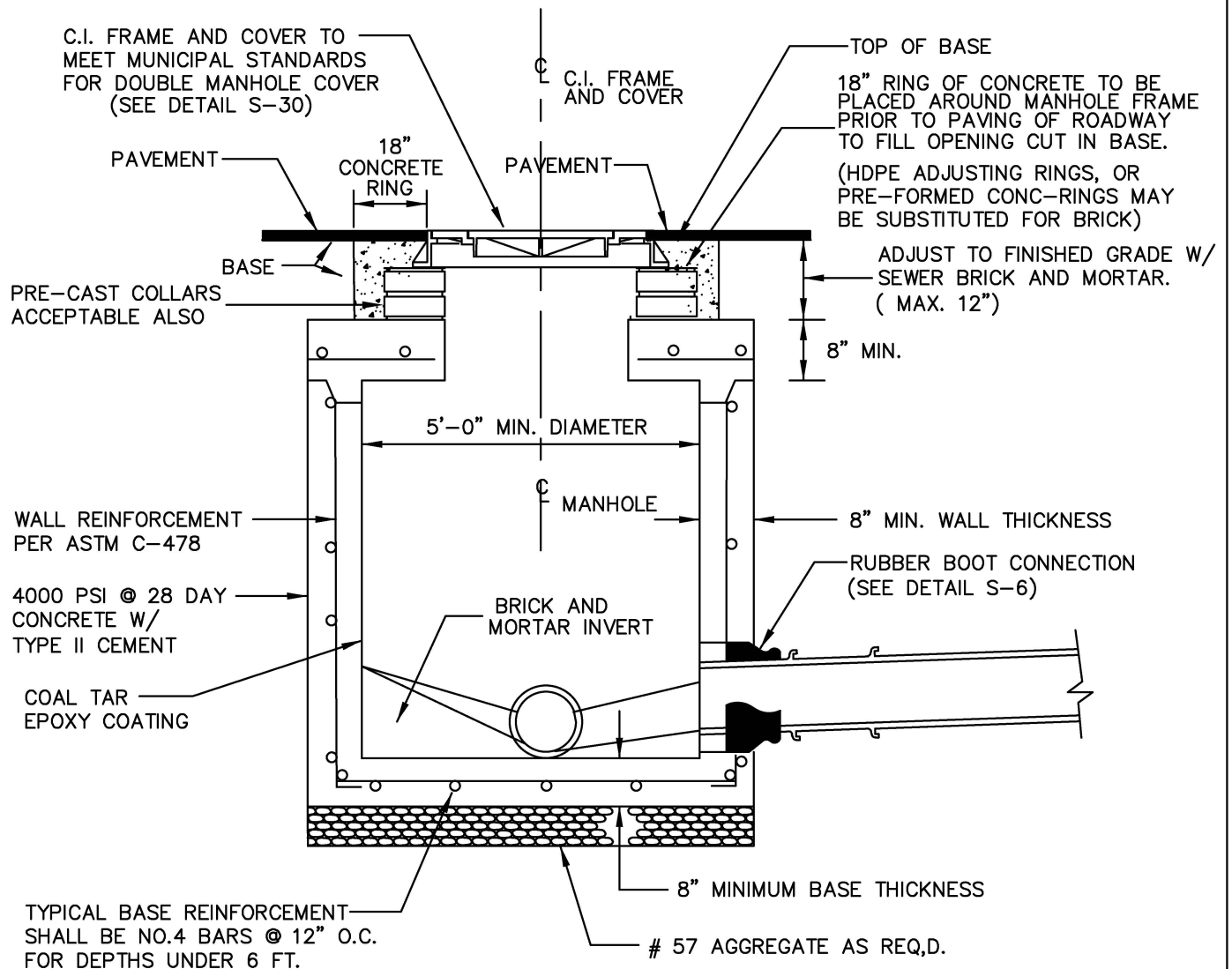
STANDARD CONSTRUCTION DETAIL  
 SANITARY SEWER COVER & GENERAL NOTES

FILE NAME:

EW\_S2.DWG

DETAIL REF:

S-2

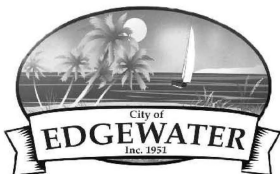


### SECTION - SHALLOW MANHOLE

USE FOR MANHOLES OF  
5'-0" OR LESS IN DEPTH

#### NOTES:

1. INSTALL EZ-WRAP PLASTIC OR EQUAL AT ALL JOINTS (MINIMUM 9" WIDTH).
2. NON-PENETRATING PICK-HOLES IN ALL CONCRETE SECTIONS.
3. USE FARBERTITE BITUMASTIC SEALER BETWEEN SECTIONS OF MANHOLE.



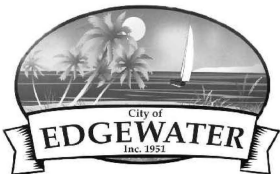
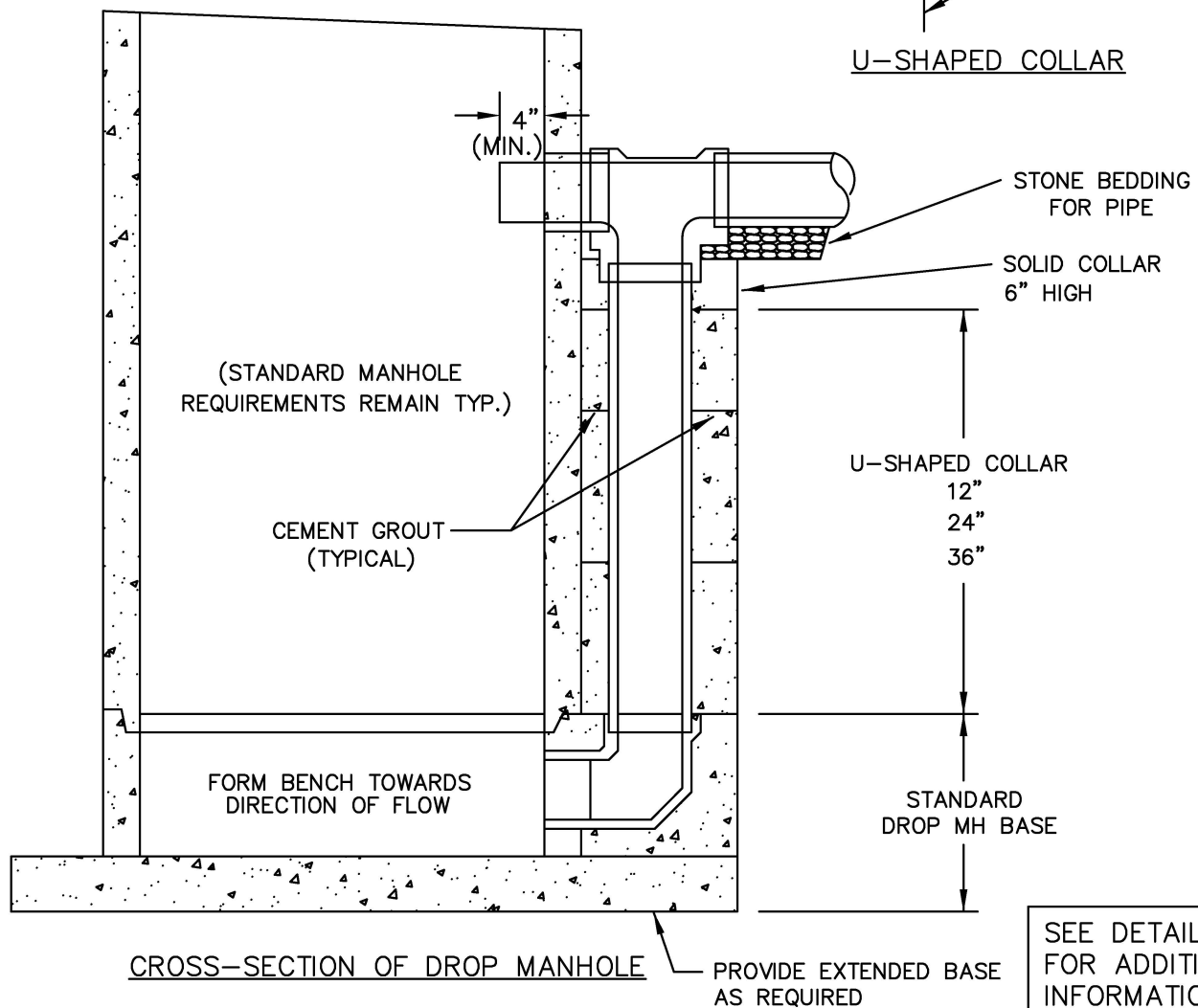
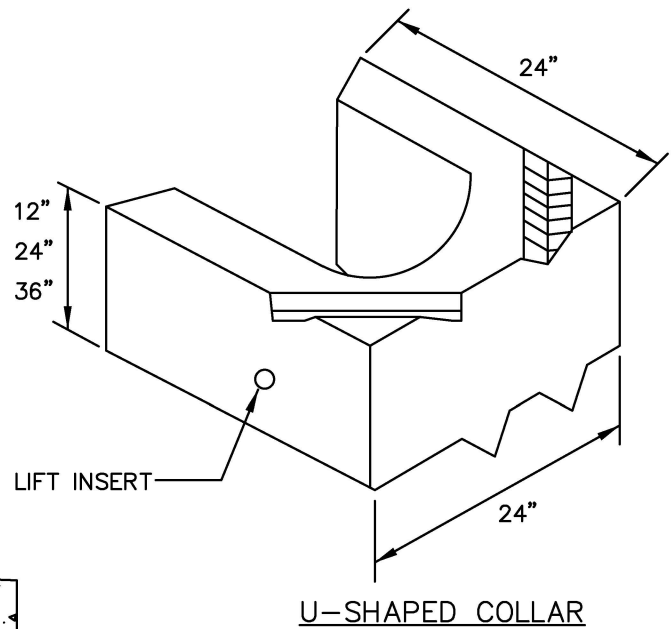
STANDARD CONSTRUCTION DETAIL  
SHALLOW MANHOLE

FILE NAME:

EW\_S3.DWG

DETAIL REF:

S-3



STANDARD CONSTRUCTION DETAIL  
OUTSIDE DROP MANHOLE  
(STANDARD NEW CONSTRUCTION)

FILE NAME:

EW\_S4.DWG

DETAIL REF:

S-4

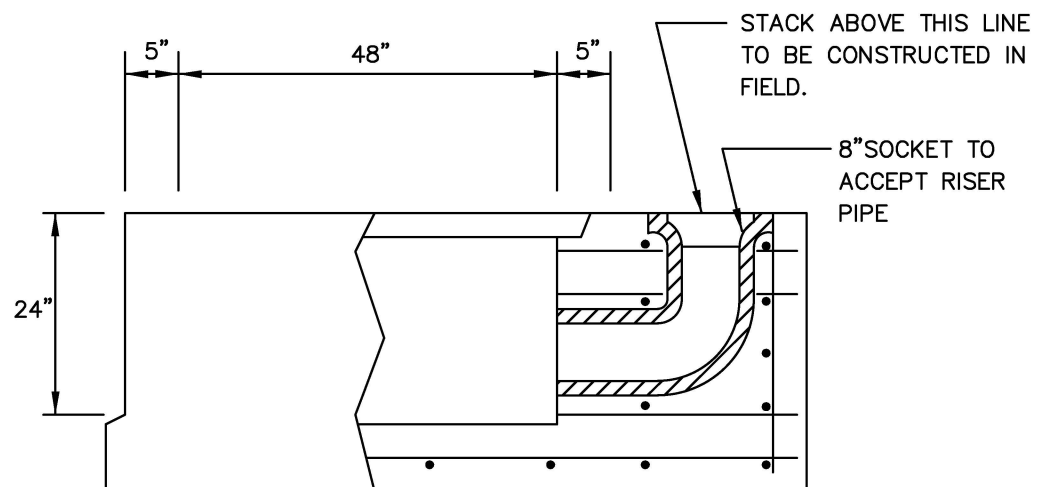
OPENING AS  
REQUIRED

STANDARD  
MANHOLE  
BASE SECTION

24"

24"

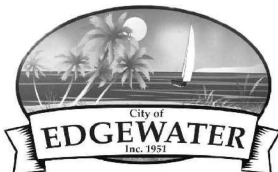
REINFORCED AREA  
0.12 IN/VERT. FT.  
JOINED TO BASE REIN.



MANHOLE BASE WITH  
PRECAST DROP

### MANHOLE DESIGN

MANHOLE DESIGN SPECIFICATIONS  
CONFORM TO "PRECAST REINFORCED  
CONCRETE MANHOLE SECTIONS.



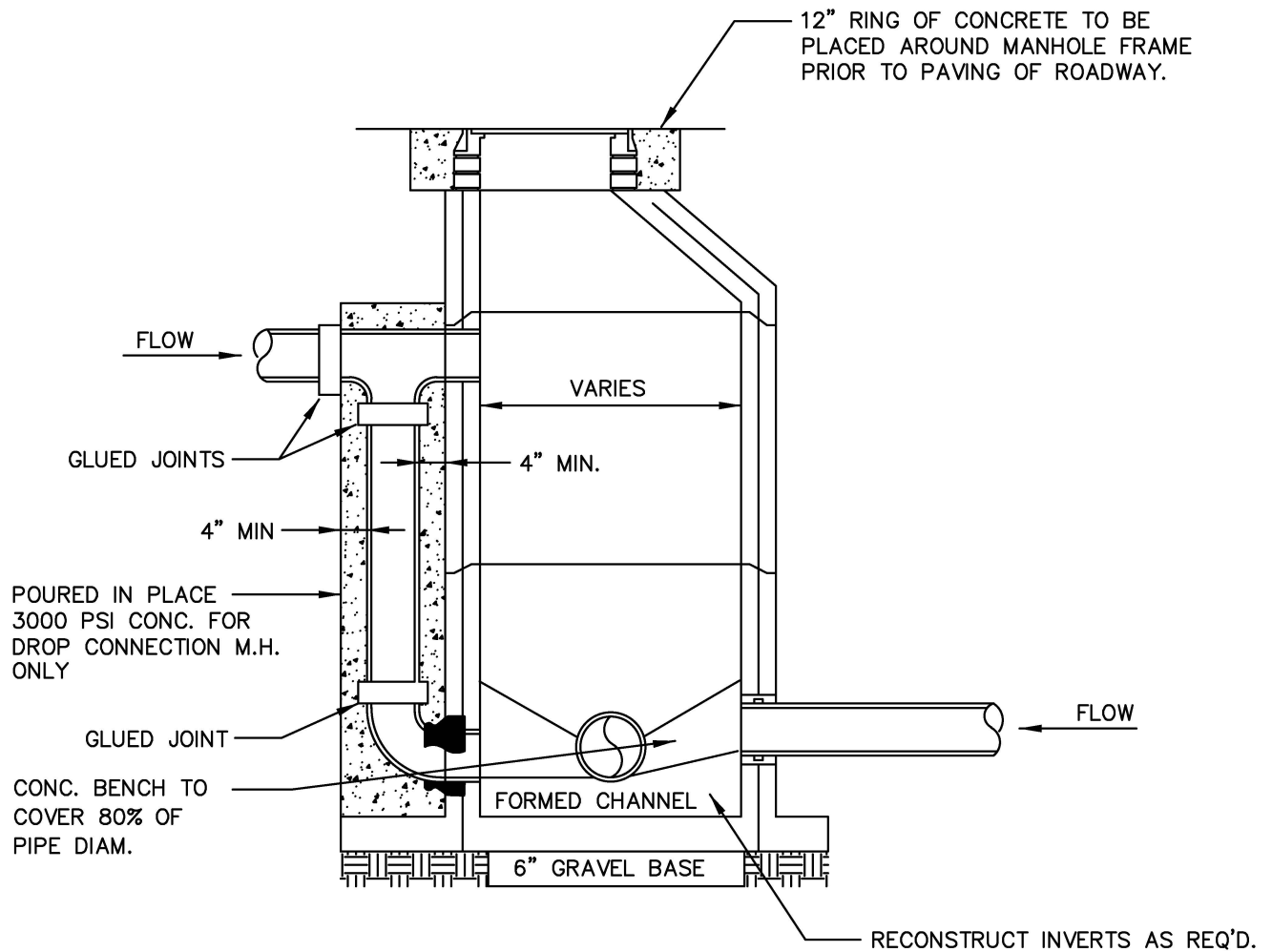
STANDARD CONSTRUCTION DETAIL  
OUTSIDE DROP MANHOLE (STANDARD)

FILE NAME:

EW\_S5.DWG

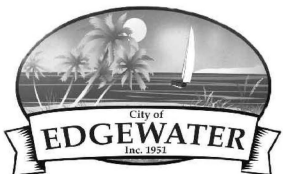
DETAIL REF:

S-5



FOR SPECIAL CONDITIONS ONLY  
( I.E. RETROFIT CONSTRUCTION )

SEE DETAIL S-1  
FOR ADDITIONAL  
INFORMATION



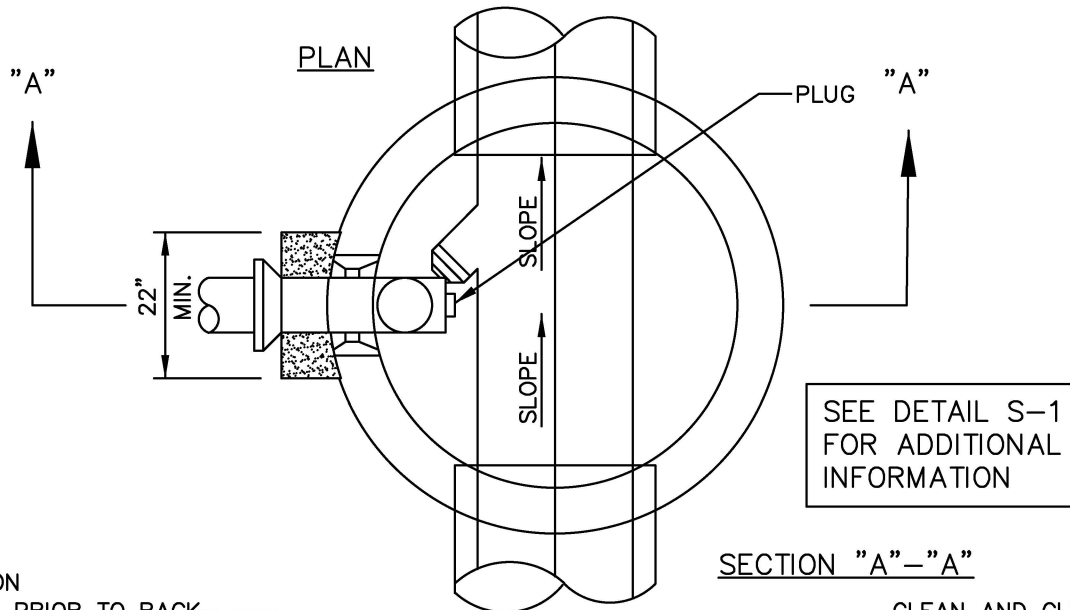
# STANDARD CONSTRUCTION DETAIL OUTSIDE DROP MANHOLE DETAIL

FILE NAME:

EW\_S6.DWG

DETAIL REF:

S-6



INSPECTION  
REQUIRED PRIOR TO BACK-  
FILLING

CORE NOT TO BE AT  
MANHOLE JOINT

WRAP PIPE WITH  
VISQUEEN

P.V.C. GRAVITY SEWER

LAY PIPE TO  
UNDISTURBED  
SOIL

FILL EXCAVATED SPACE  
OUTSIDE MANHOLE AND PIPE  
WITH 3000 PSI CONCRETE  
FOR A WIDTH OF 6" EACH  
SIDE OF PIPE BUT NOT LESS  
THAN A TOTAL MIN. WIDTH  
OF 22".

ELBOW EMBEDDED IN CONC.  
@ 45° W/SEWER FLOW

CONC. BENCH TO COVER  
80% OF MAINLINE PIPE  
DIAMETER

RUBBER  
BOOTS  
REQUIRED

THREADED  
PVC PLUG

TEE

5'-0" (MIN.)

MATCH  
OVERTS

CLEAN AND GLUE  
ALL JOINTS

DROP CONNECTION  
PIPE & FITTINGS TO  
BE SAME MATERIAL  
AS LATERAL

CLAMPS TO BE  
1 1/2" x 12"  
STAINLESS STEEL,  
ANCHORED TO M.H.  
WALL WITH 2 1/2" x  
1/2" STAINLESS  
STEEL BOLTS.  
( 2' ON CENTER )

PLASTIC SPACERS  
MIDWAY BETWEEN  
CLAMPS

PIPE TO BE PLACED  
AS CLOSE AS  
POSSIBLE TO M.H.  
WALL AND TO BE  
SECURED TO THE  
WALL WITH STAINLESS  
STEEL CLAMPS

NOTES:

1. ALL INSIDE PIPING TO BE P.V.C.
2. USE FARBERTITE BITUMASTIC SEALER BETWEEN MANHOLE SECTIONS.

FOR SPECIAL  
CONDITIONS ONLY



STANDARD CONSTRUCTION DETAIL  
INSIDE DROP MANHOLE DETAIL FOR  
RETROFIT AND SPECIAL CONDITIONS ONLY

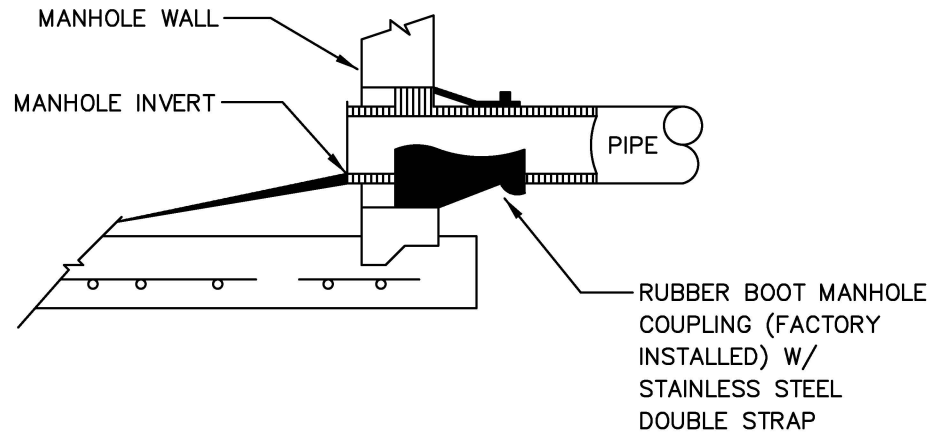
FILE NAME:

EW\_S7.DWG

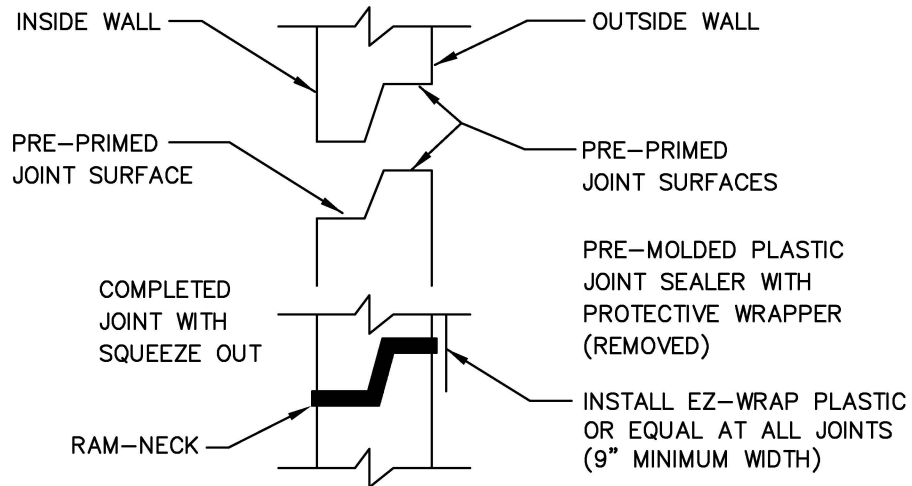
DETAIL REF:

S-7





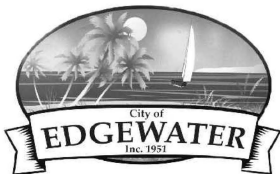
MANHOLE PIPE CONNECTION DETAIL  
FOR NEW CONNECTIONS IN EXISTING MANHOLES



PRECAST JOINT CONNECTION

NOTES:

1. ALL NEW CONNECTIONS TO EXISTING SANITARY SEWER MANHOLES SHALL UTILIZE A CORING METHOD AND THE IN-FIELD INSTALLATION OF A RUBBER BOOT INTO THE MANHOLE.



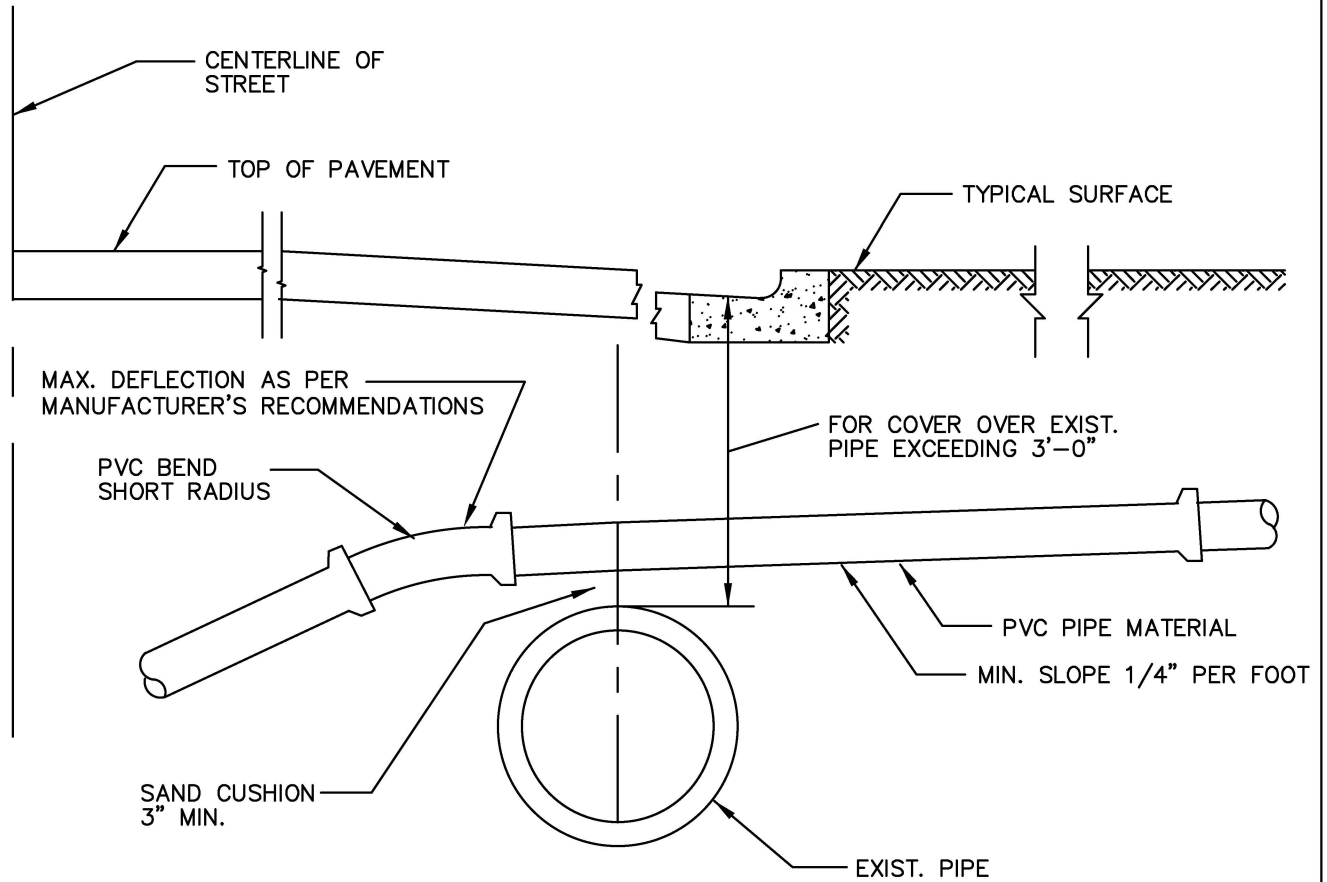
STANDARD CONSTRUCTION DETAIL  
RUBBER BOOT AND PRECAST JOINT  
CONNECTION DETAIL

FILE NAME:

EW\_S8.DWG

DETAIL REF:

S-8



ALTERNATE GRADIENT FOR HOUSE SERVICE  
SEWERS AT CONFLICTS WITH EXISTING STORM  
SEWERS & OTHER EXISTING CONDUITS

APPROVED PIPE MATERIALS—PVC (SDR 26)



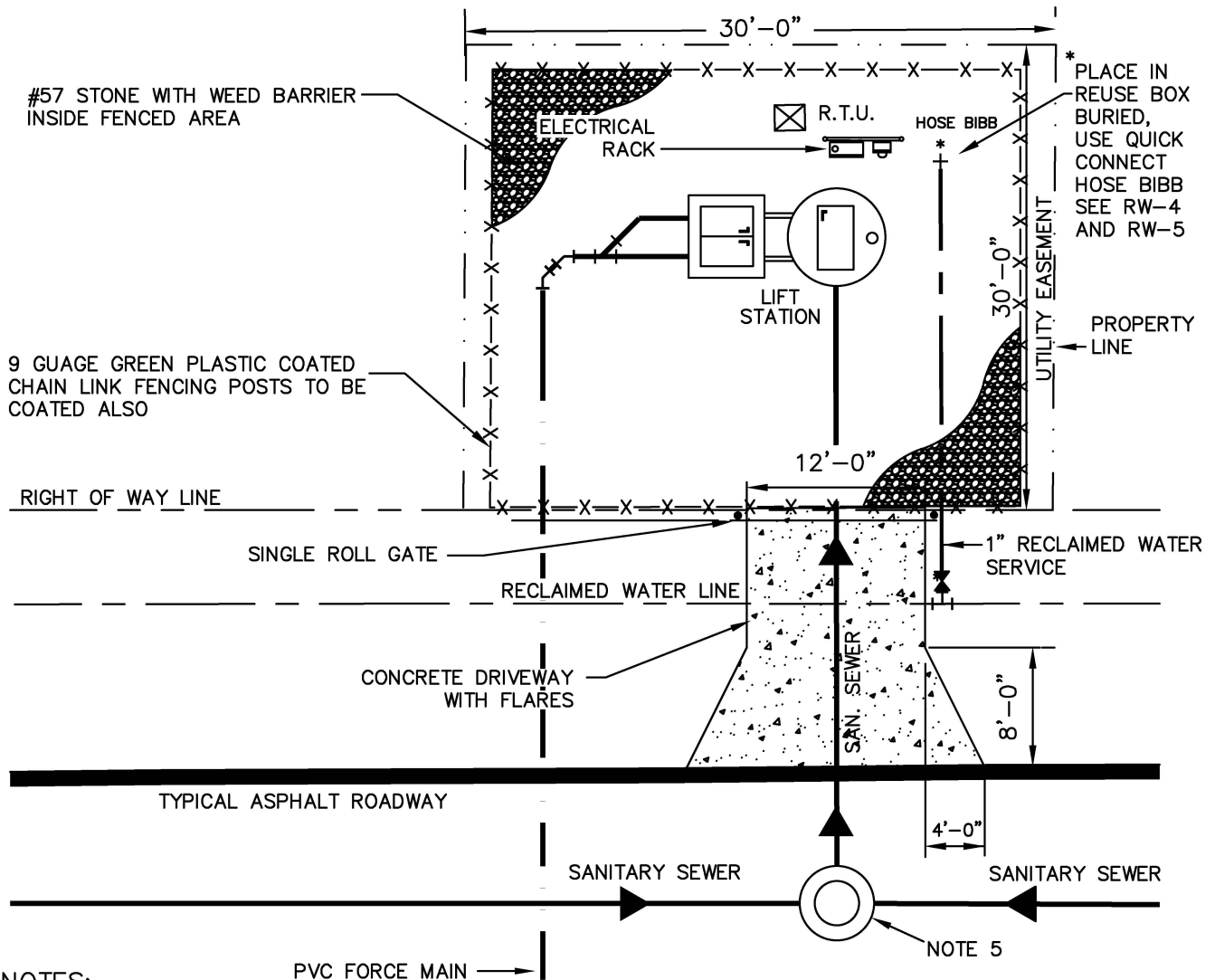
STANDARD CONSTRUCTION DETAIL  
SEWER LINE UTILITY CROSSING DETAIL

FILE NAME:

EW\_S9.DWG

DETAIL REF:

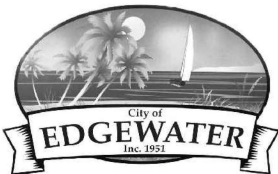
S-9



#### NOTES:

1. DRIVEWAY TO BE 6" THICK 3000 PSI CONCRETE AT 28 DAYS WITH 6x6 10/10 W.W. MESH. BASE TO BE COMPACTED AND TESTED TO 98% DENSITY WITH MINIMUM L.B.R. 40 BASED ON A.A.S.H.T.O. T-180 MODIFIED PROCTOR TEST.
2. IF RECLAIMED WATER IS UNAVAILABLE FOR LIFT STATION WATER SERVICE, CONTRACTOR SHALL USE POTABLE WATER.
3. REFER TO APPROPRIATE STANDARD CONSTRUCTION DETAIL FOR EMERGENCY PUMP CONNECTION/PLUG VALVE DETAIL AND LIFT STATION WATER SERVICE DETAIL
4. FENCE MAY BE RELOCATED INTERNALLY WITHIN SITE TO CREATE A 25' X 25' SITE IF LANDSCAPING MATERIALS ARE INSTALLED AROUND THE PERIMETER.
5. MANHOLE TO BE LINED, "E.G.R.V." OR APPROVED EQUAL.
6. LANDSCAPING SHALL CONSIST OF #57 WHITE ROCK. BUSHES, ACCEPTABLE TO THE CITY, SHALL BE PLACED AS A VISUAL BUFFER TO ANY RESIDENTIAL AREAS ADJACENT TO THE LIFT STATION.
7. INSIDE FENCE AREA, STOP DRIVEWAY AT FENCE LINE AND ADD FOUR INCHES OF #57 STONE ON INSIDE OF FENCE AREA WITH WEED BARRIER UNDERNEATH. OUTSIDE OF FENCE AREA TO BE SODDED.
8. FENCING SHALL BE 6' HIGH WITH SINGLE ROLL GATE. NOT SWING GATE.
9. ALL LIFT STATIONS WITH PUMPS 20HP, OR LARGER, SHALL BE EQUIPPED WITH AN EMERGENCY POWER GENERATOR REVISE SITE PLAN ACCORDINGLY.

\* IF RECLAIMED SVC. IS UNAVAILABLE, USE DETAIL #S-16 FOR WATER SERVICE



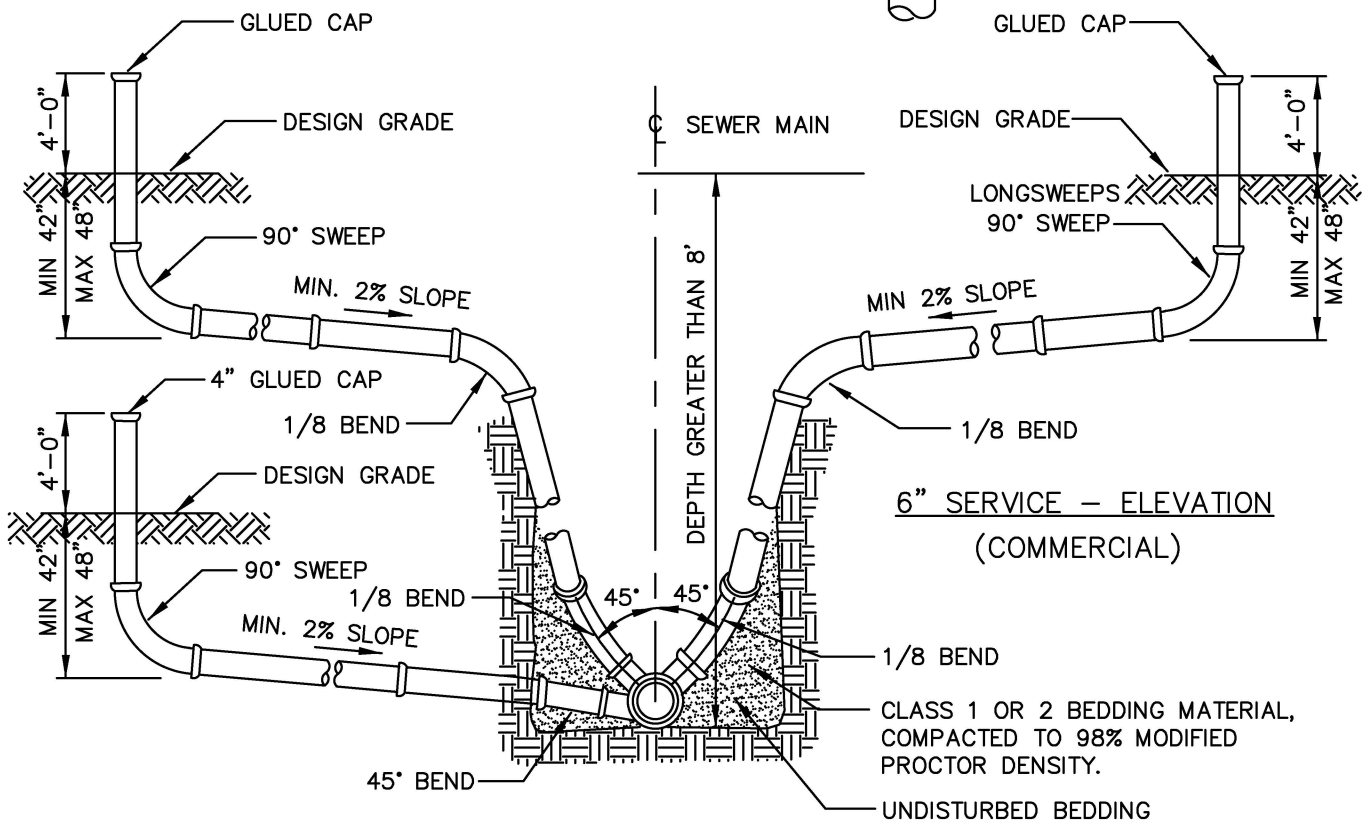
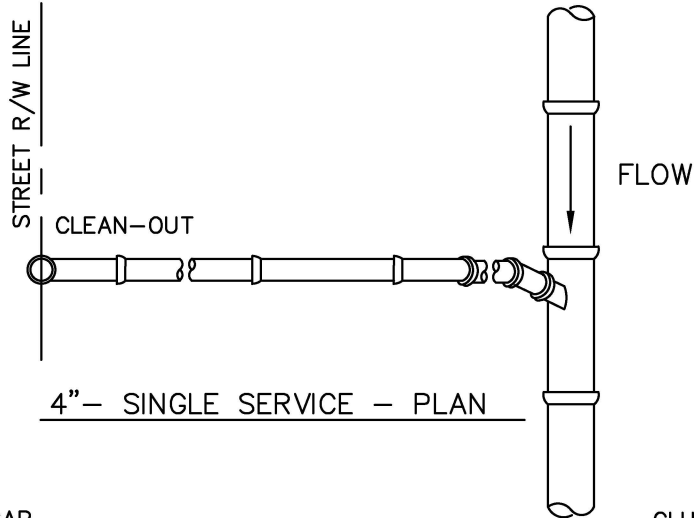
### STANDARD CONSTRUCTION DETAIL TYPICAL LIFT STATION SITE PLAN

FILE NAME:

EW\_S15.DWG

DETAIL REF:

S-15



4" - 6" SINGLE SERVICE - ELEVATION

NOTES:

1. USE OF STYRENE MATERIAL WILL NOT BE PERMITTED.
2. ALL JOINTS TO BE RUBBER GASKET (NO GLUED FITTINGS) TYPICAL.
3. USE ALL HARCO SDR-26 FITTINGS OR CITY APPROVED EQUAL.

4" - RESIDENTIAL  
6" - COMMERCIAL

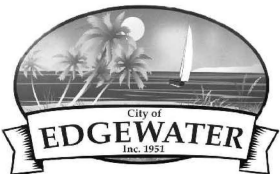
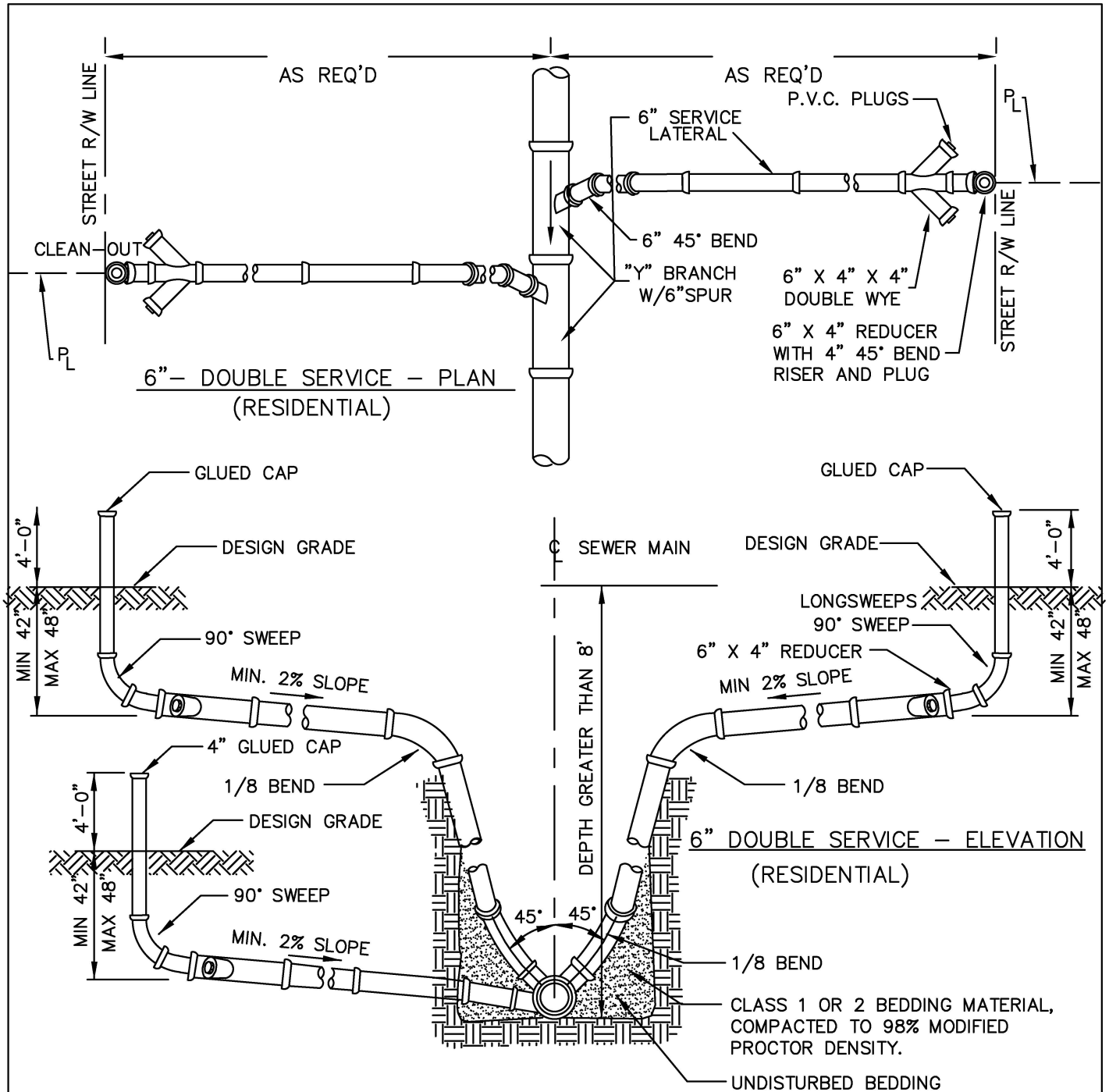


STANDARD CONSTRUCTION DETAIL  
SEWER LATERAL DETAIL  
(SINGLE 4" RESIDENTIAL)  
(SINGLE 6" COMMERCIAL)

FILE NAME:  
EW\_S10.DWG

DETAIL REF:

S-10



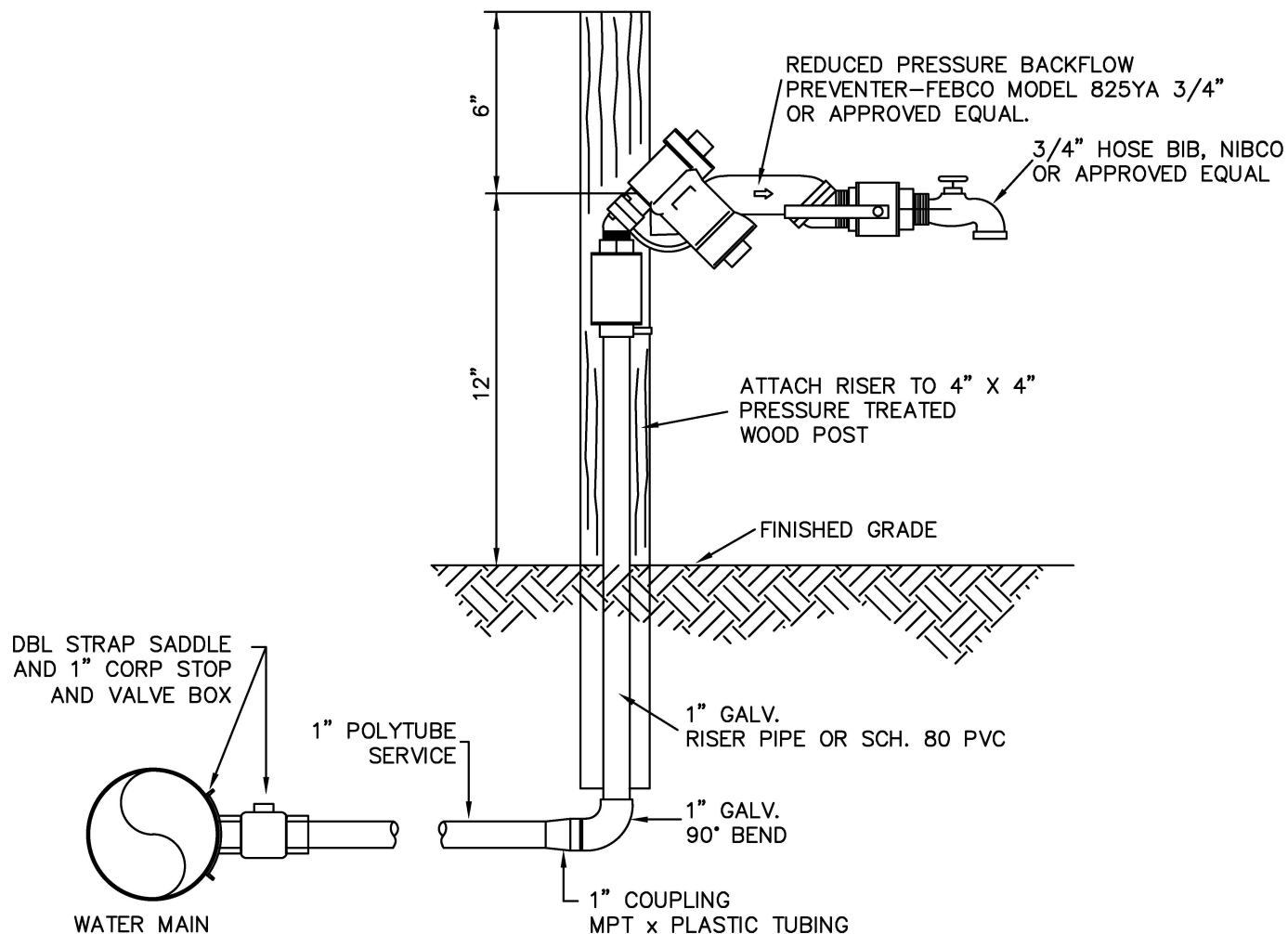
STANDARD CONSTRUCTION DETAIL  
SEWER LATERAL DETAIL  
(DOUBLE 6" RESIDENTIAL)

FILE NAME:

EW\_S11.DWG

DETAIL REF:

S-11



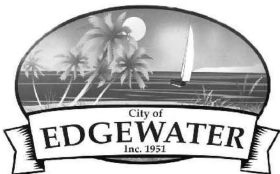
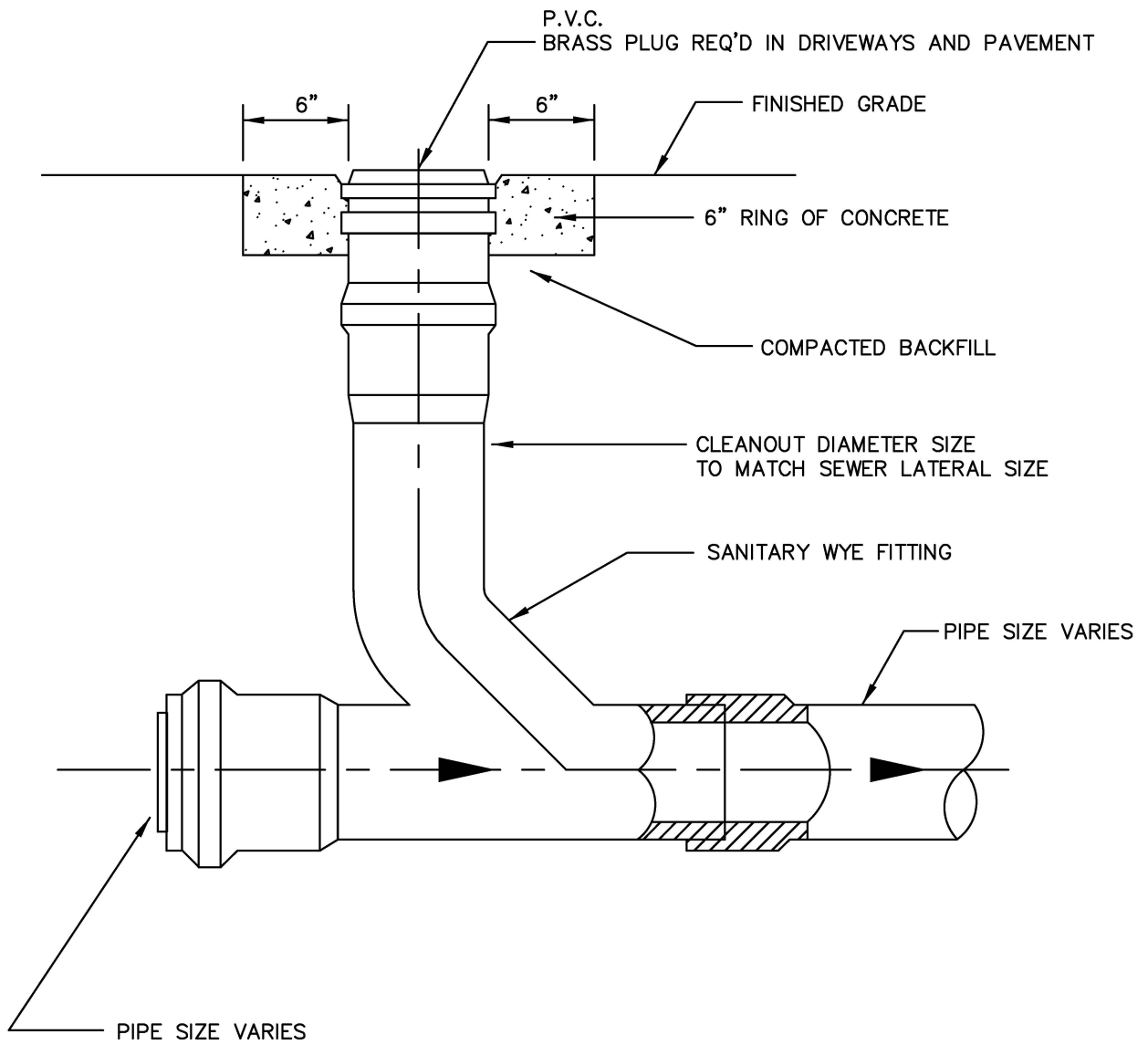
STANDARD CONSTRUCTION DETAIL  
LIFT STATION POTABLE WATER SERVICE  
(WHERE RECLAIMED WATER NOT AVAILABLE)

FILE NAME:

EW\_S16.DWG

DETAIL REF:

S-16



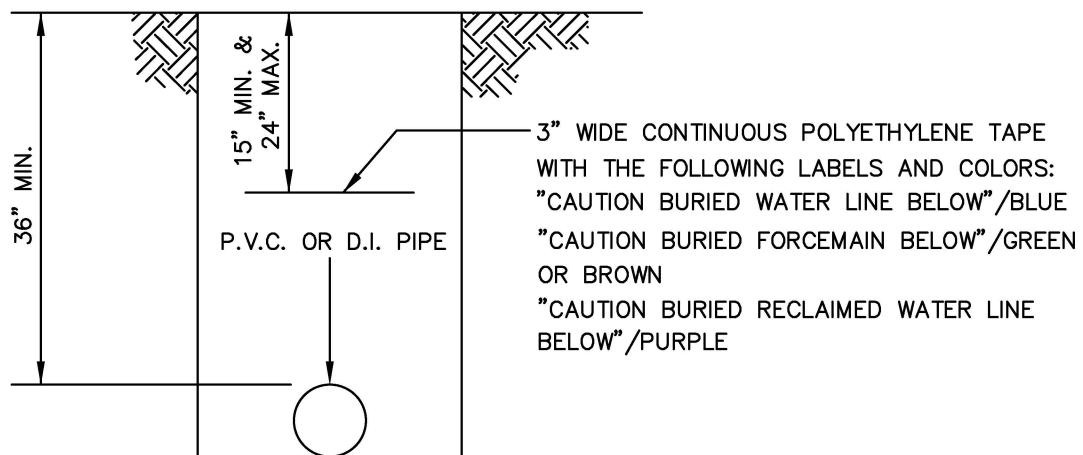
# STANDARD CONSTRUCTION DETAIL CLEANOUT DETAIL

FILE NAME:

EW\_S12.DWG

DETAIL REF:

S-12



"TERRA TAPE D" or SIMILAR



STANDARD CONSTRUCTION DETAIL  
LOCATOR TAPE INSTALLATION FOR  
SEWER, WATER AND RECLAIMED WATER PIPELINES

FILE NAME:

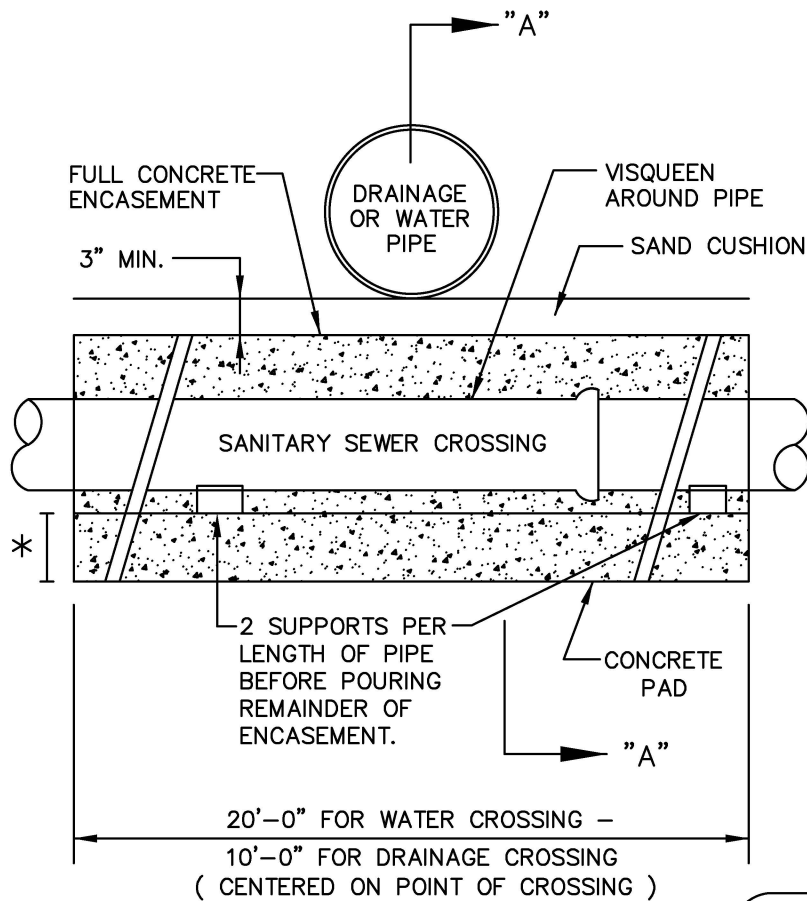
EW\_S13.DWG

DETAIL REF:

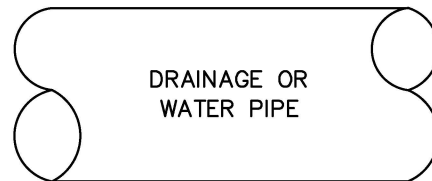
S-13



NOTES:

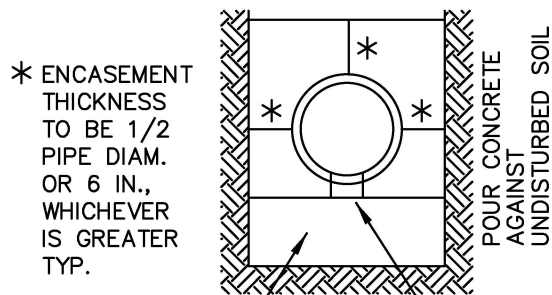


ELEVATION



NOTES:

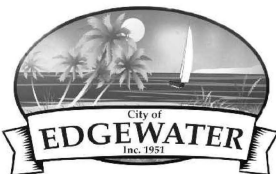
1. ALL CONCRETE SHALL BE 3000 PSI MINIMUM 28 DAYS STRENGTH.
2. WATER MAIN SHALL BE LOCATED ABOVE OR BELOW ENCASEMENT AS SHOWN ON PLANS OR DETERMINED IN THE FIELD, USE ENCASEMENT WHERE VERTICAL CLEARANCE WATER MAIN AND SEWER MAIN IS LESS THAN 6 INCHES.
3. NO DUCTILE IRON SEWER PIPE IS PERMITTED.
4. ENCASEMENT OR A.C. PIPE IS NOT ALLOWED REPLACE AFFECTED SECTIONS WITH PVC



CONCRETE  
PAD

SECTION "A"-"A"

2 SUPPORTS PER  
LENGTH OF PIPE  
BEFORE POURING  
REMAINDER OF  
ENCASEMENT.



STANDARD CONSTRUCTION DETAIL  
SEWER CONDUIT CROSSING

FILE NAME:

EW\_S14.DWG

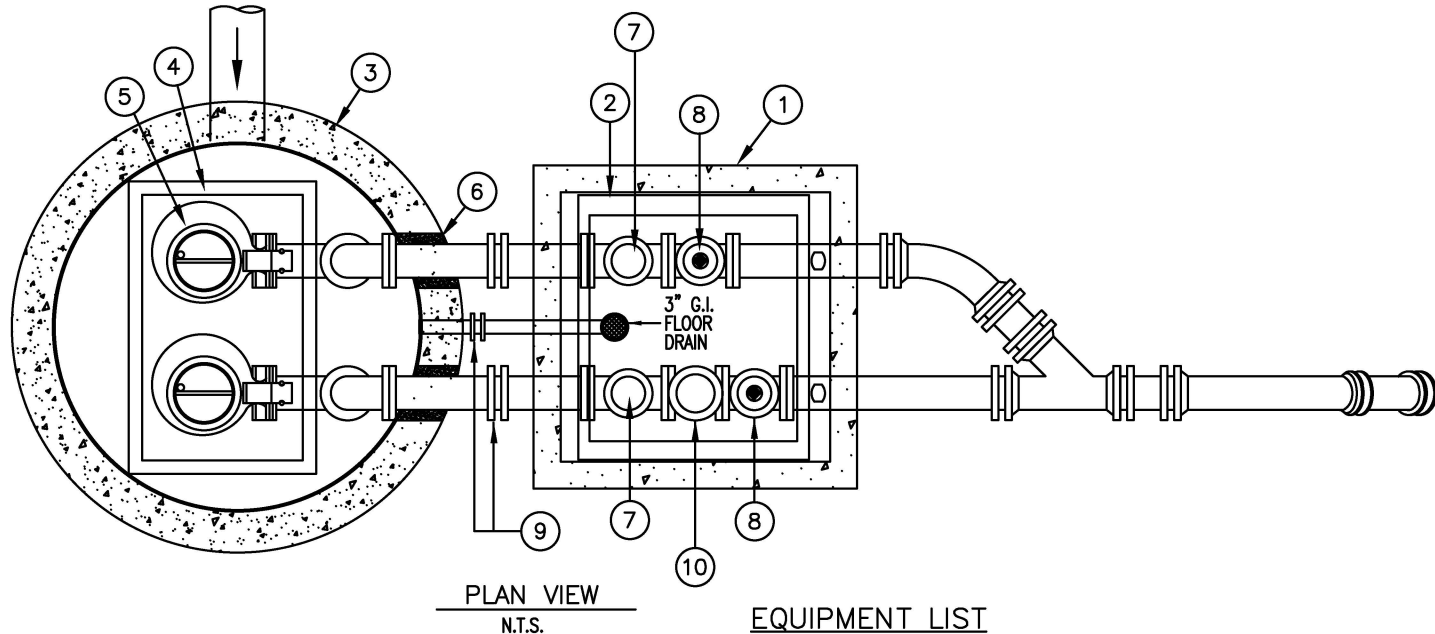
DETAIL REF:

S-14



# STANDARD CONSTRUCTION DETAIL

LIFT STATION  
PLAN VIEW  
(SUBMERSIBLE)



## NOTES:

1. SANDBLAST AND PAINT INTERIOR OF VALVE VAULT PRE-COAT EPOXY FROM MANUFACTURER OR 2 COATS - 15 MILS TOTAL OF APPROVED COATING.
2. COORDINATE WET WELL ACCESS HATCH LOCATION WITH PUMP MOUNTING LOCATIONS. PROVIDE HASP TYPE LOCKING MECHANISM ON ALL ACCESS HATCHES. ALL HATCHES TO BE 300 P.S.F. LOAD RATED.
3. SEE SPECIFICATIONS FOR APPROVED VALVE TYPES AND MANUFACTURERS.
4. PUMPS TO BE FURNISHED WITH HIGH PRESSURE DISCHARGE COUPLING, STAINLESS STEEL SLIDERAIL SYSTEM, SEAL FAILURE AND THERMAL OVERLOAD INDICATORS.
5. ALL PIPES, INVERTS AND HATCHES TO BE THE SIZE AND KIND SPECIFIED ON THE SET OF APPROVED CONSTRUCTION PLANS.
6. ALL HARDWARE INSIDE WETWELL TO BE 316 STAINLESS STEEL.
7. ALL PRESSURE PIPING TO BE RESTRAINED W/MEGALUG FITTINGS OR EQUAL.
8. PRESSURE GUAGE TO BE INSTALLED ON DISCHARGE SIDE OF PLUG VALVE, OPPOSITE SIDE OF BYPASS. USE DIAPHRAGM STYLE GUAGE ASSEMBLY.

## EQUIPMENT LIST

- ① PRECAST VALVE VAULT SEE NOTE 1
- ② VALVE VAULT ACCESS HATCH U.S. FOUNDRY APD300 48x48, SEE NOTE 2
- ③ 6'-0" DIAMETER PRECAST CONCRETE WET WELL INTEGRALLY CAST "E.G.R.U" WET WELL LINER
- ④ WET WELL ACCESS HATCHES, SEE NOTE 2
- ⑤ FLGYT OR ABS SUBMERSIBLE PUMPS.
- ⑥ GROUT SEAL AROUND DISCHARGE LINES WITH NON-SHRINK GROUT
- ⑦ FL. x FL. CHECK VALVE
- ⑧ FL. x FL. 1/4 TURN PLUG VALVE W/ VALVE WRENCH
- ⑨ M.J. X M.J. SLEEVE W/ MEGALUG RESTRAINT
- ⑩ EMERGENCY PUMP CONNECTION

FILE NAME:

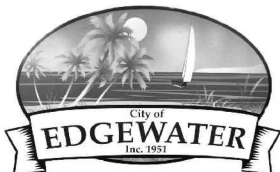
EW\_S18.DWG

DETAIL REF:

S-18

LIFT STATION WET WELL DESIGN AND CONSTRUCTION NOTES  
FOR SUBMERSIBLE PUMP STATIONS

1. SEE CITY STANDARD DETAIL FOR EMERGENCY PUMP CONNECTION REQUIREMENTS
2. SEE CITY STANDARD DETAIL FOR 1" HOSE BIBB AND REQUIREMENTS.
3. SEE CITY STANDARD DETAIL FOR ALL ELECTRICAL REQUIREMENTS.
4. MINIMUM WET WELL DIAMETER IS 6 FT. THE MINIMUM REQUIRED DEPTH OF WET WELL BELOW THE LOWEST INVERT, SHOULD BE SET TO ALLOW THE MINIMUM RUN AND CYCLE TIMES OF THE PUMPS.
5. ALL PIPING AND FITTINGS IN WET WELL TO BE EPOXY LINED AND ASSEMBLED WITH 316 STAINLESS STEEL BOLTS AND NUTS ONLY.
6. STATION TOP TO BE AT 1" ABOVE FINISHED GRADE AND TAPERED TO FINISHED GRADE AND ITS ELEVATION WILL BE NO LOWER THAN THE 100-YEAR BASE FLOOD ELEVATION.
7. ALL DISCHARGE FITTINGS ON THE EXIT SIDE OF THE VALVE VAULT WILL BE PVC RESTRAINED JOINT.
8. ALL SEWER LINES ENTERING AND EXITING MANHOLES SHALL BE SEALED UTILIZING RUBBER BOOTS OR OTHER CITY APPROVED INFILTRATION LIMITING METHOD
9. WET WELL SECTIONS SHALL BE JOINED USING RAMNECK JOINT MATERIAL AND SHALL BE FREE FROM SEEPAGE PRIOR TO ACCEPTANCE. PROVIDE EZ-WRAP BUTYL ADHESIVE TAPE PER MANUFACTURERS RECOMMENDATIONS AT EACH WET WELL SECTION EXTERIOR JOINT CIRCUMFERENCE. USE EASY STICK NO.4 PRIMER PER MANUFACTURERS RECOMMENDATIONS PRIOR TO INSTALLATION OF EZ-WRAP TAPE.
10. NO SPLICES OR JUNCTION BOXES ARE ALLOWED FOR BALL FLOAT CORD INSTALLATION.
11. ALL LIFT STATIONS SHALL BE FIBERGLASS LINED OR LINED WITH ANOTHER MATERIAL AS APPROVED BY THE CITY (ASTM d 3753)
12. WET WELL CONSTRUCTION SHALL BE REINFORCED CONCRETE IN ACCORDANCE WITH ASTM C-76 4000PSI AT 28 DAYS. ALTERNATE CONSTRUCTION SHALL BE PRECAST MONOLITHIC WITH BASE SLAB IN ACCORDANCE WITH ASTM C-478.
13. ELECTRICAL PERMIT TO BE OBTAINED FROM THE CITY PRIOR TO BEGINNING WORK ON ANY ELECTRICAL WIRING, EQUIPMENT, ETC. ALL ELECTRICAL WIRING TO COMPLY WITH THE CURRENT NATIONAL ELECTRIC CODE.
14. THREE COPIES OF THE LIFT STATION OPERATING MANUAL TO BE PROVIDED TO THE ENVIRONMENTAL SERVICES DEPARTMENT PRIOR TO FINAL ACCEPTANCE OF THE LIFT STATION.
15. EMERGENCY HIGH LEVEL WETWELL FLASHING RED LIGHT REQUIRED WITH AUDIBLE ALARM (SEE S-20 NOTES)
16. LINKABLE FUSED ELECTRICAL DISCONNECT REQUIRED.
17. ALL PUMP STATION WIRING SHALL BE STANDARD COPPER.
18. THREE PHASE POWER AND MOTORS REQUIRED.
19. DISCONNECT FOR FUTURE TELIMITRY TO BE PROVIDED, SEE CITY FOR REQUIREMENTS.
20. FLOAT HANGER WILL BE INSTALLED AVOIDING ALL CONFLICTS WITH ANY INVERTS.
21. 2 IN. CONDUIT SHALL BE INSTALLED FOR FLOAT WIRES. EACH PUMP CORD SHALL HAVE A SEPARATE 2" CONDUIT.
22. ALL PUMPS WILL BE SPACED AND SET PER PUMP MANUFACTURERS SPECIFICATIONS.
23. ALL PUMP GUIDE RAILS WILL BE STAINLESS STEEL OR APPROVED EQUAL.
24. ALL WET WELL FLOORS WILL BE SLOPED TO AVOID ANY SETTLEMENT OF SOLIDS.
25. ALL VALVE VAULT FLOORS WILL BE SLOPED AND PITCHED TOWARD THE FLOOR DRAIN.
26. A MINIMUM OF 95% DENSITY WILL BE REQUIRED FOR ALL STRUCTURES. (WET WELL VALVE VAULT, ETC.)
27. AFTER DENSITY IS ACHIEVED, A 1 FT. BED OF #57 STONE WILL BE PLACED BETWEEN EARTH AND STRUCTURE.
28. CONTRACTOR MUST PROVIDE A POST CONSTRUCTION VIDEO OF ALL MANHOLES AND GRAVITY SEWER LINES.
29. A DIAPHRAGM STYLE PRESSURE GAUGE WILL BE INSTALLED ON THE DISCHARGE SIDE OF THE PLUG VALVE. INSTALLATION WILL BE A STAINLESS STEEL SADDLE TAP METHOD, AND EQUIPPED WITH A BRASS BALL VALVE BETWEEN THE GAUGE AND THE PIPE.
30. ALL PUMP STATIONS WITH PUMPS 20 HP, OR GREATER, SHALL HAVE AN EMERGENCY POWER GENERATOR. PROVIDE SIGNED AND SEALED DRAWINGS OF GENERATOR AND ENCLOSURE AND REQUIRES 277/480 VOLTAGE.



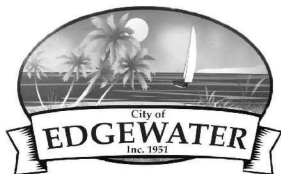
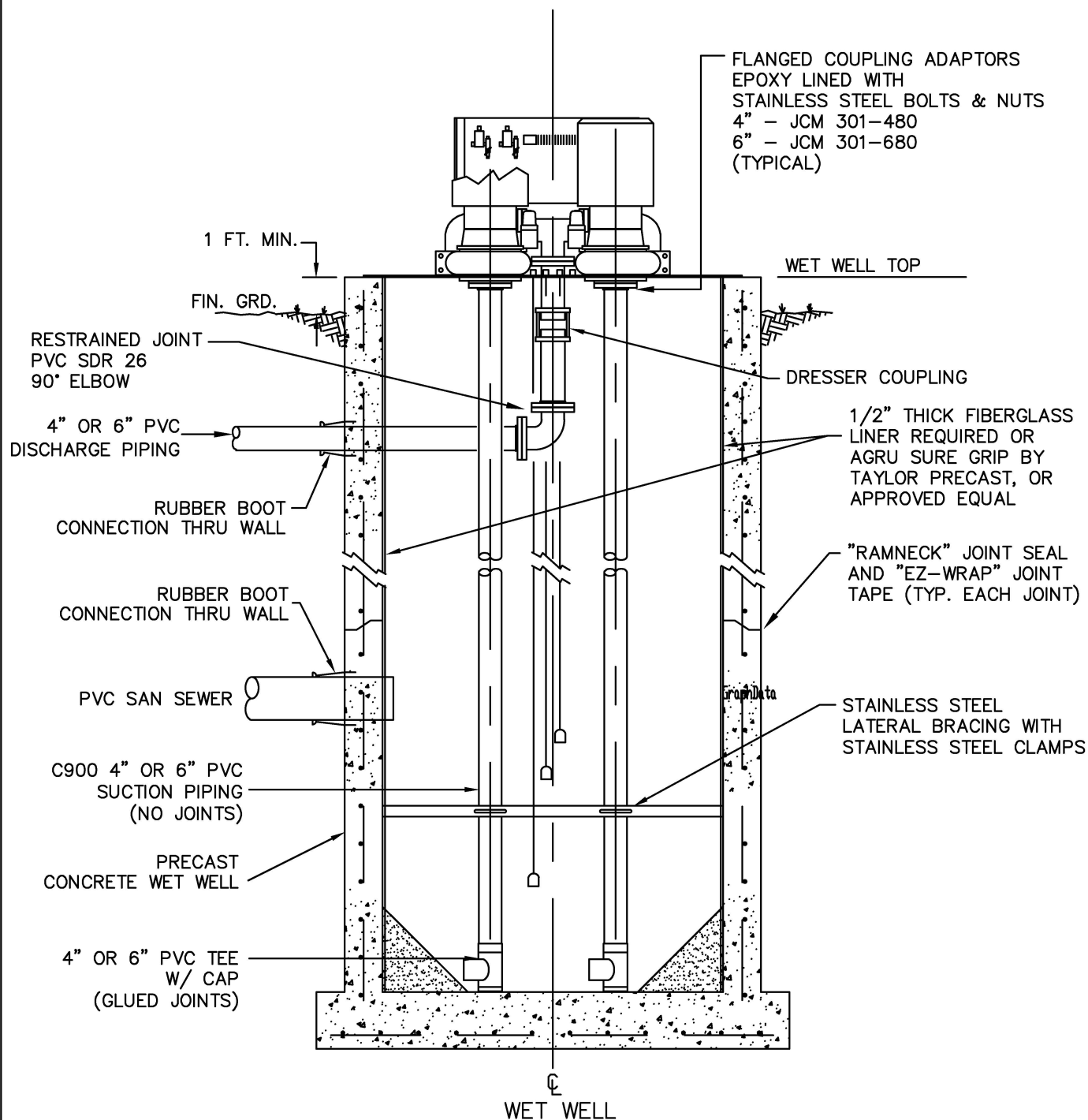
STANDARD CONSTRUCTION DETAIL  
LIFT STATION WET WELL DESIGN AND  
CONSTRUCTION NOTES  
(SUBMERSIBLE PUMP STATIONS)

FILE NAME:

EW\_S19.DWG

DETAIL REF:

S-19



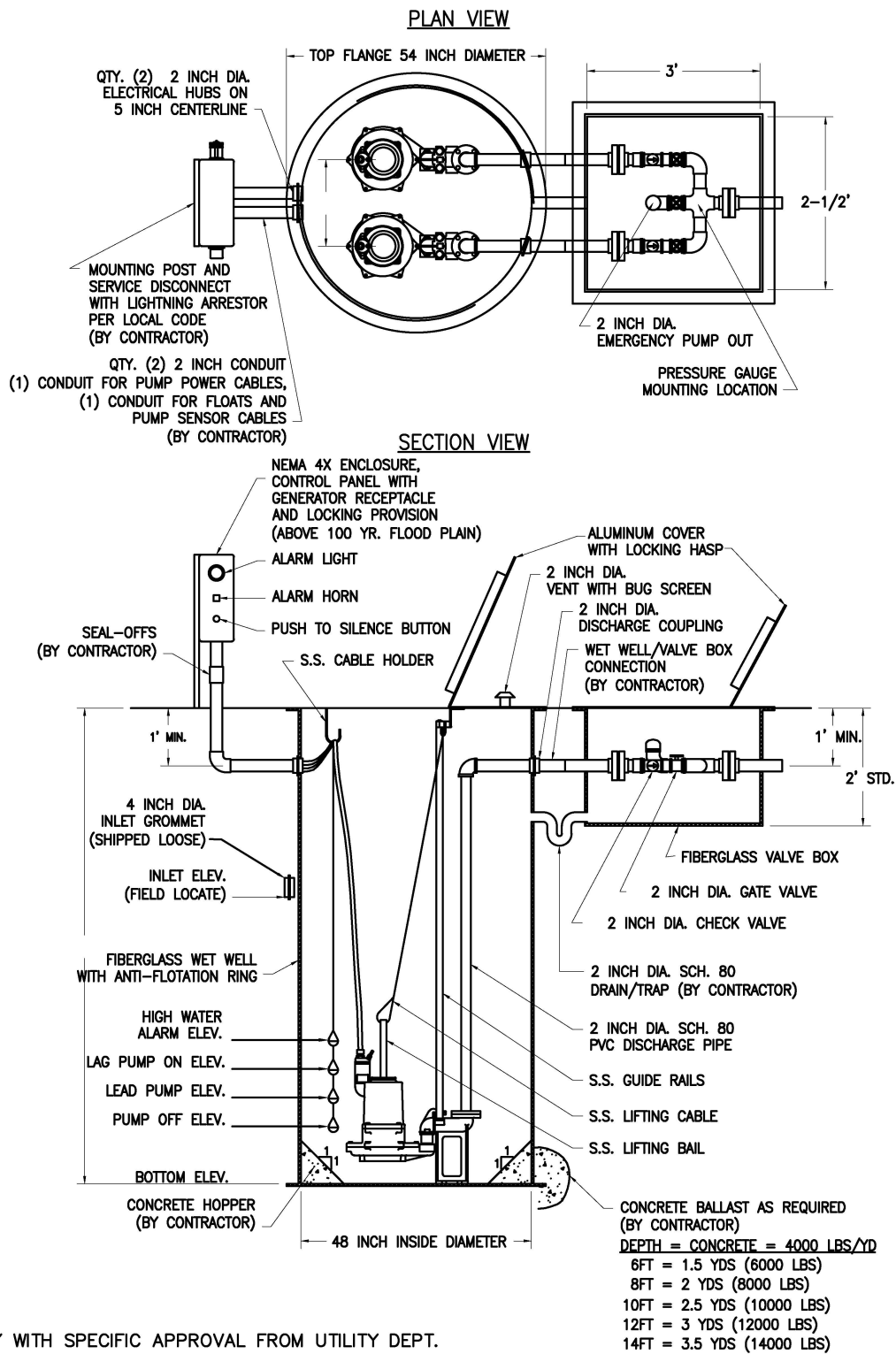
STANDARD CONSTRUCTION DETAIL  
LIFT STATION WET WELL SECTION  
(NON-SUBMERSIBLE)

FILE NAME:

EW\_S20.DWG

DETAIL REF:

S-20



**NOTES:**

1. USE ONLY WITH SPECIFIC APPROVAL FROM UTILITY DEPT.
2. PRESSURE AND FLOW CONDITIONS TO BE DETERMINED BY DESIGN ENGINEER.



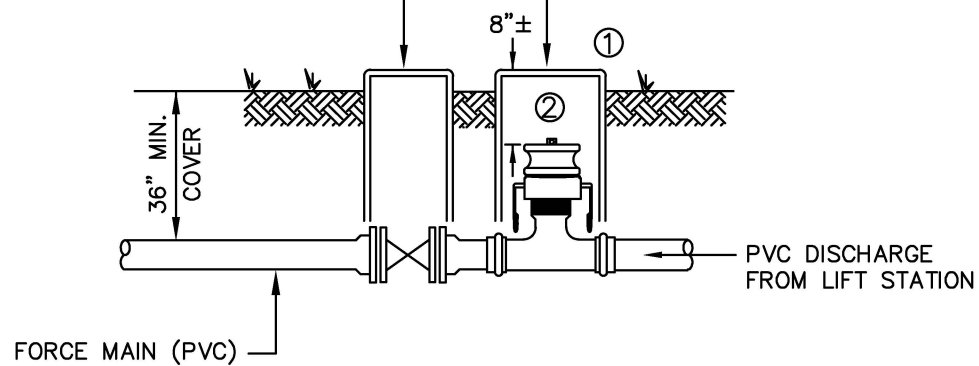
STANDARD CONSTRUCTION DETAIL  
UNITARY SEWAGE PUMP STATION

FILE NAME:  
EW\_S22C.DWG

DETAIL REF:  
S-22C

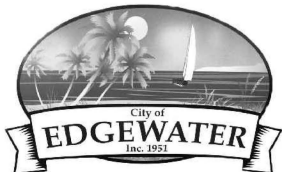
EMERGENCY PUMP CONNECTION AND BOX  
4" OR 6" BRANCH AND 4" RISER, FEMALE  
CAM-LOCK FITTING AND DUST PLUG

6" OR 4" RESILIENT SEAT  
GATE VALVE AND BOX



NOTES:

1. PUMP CONNECTION BOX IS CDR #WB001527-12. SOLID 15" X 27" COVER WITH "SEWER" IMPRINTED ON LID.
2. CAM-LOK PIPE FITTING IS 4" MIPX MALE CAMLOCK WITH FEMALE DUST PLUG.



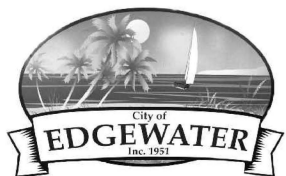
STANDARD CONSTRUCTION DETAIL  
LIFT STATION  
EMERGENCY PUMP CONNECTION

FILE NAME:  
EW\_S20A.DWG

DETAIL REF:  
S-20A

LIFT STATION WET WELL DESIGN AND CONSTRUCTION NOTES  
FOR WET WELL MOUNTED STATIONS

1. SMITH AND LOVELESS DUPLEX WET WELL MOUNTED OR RECESSED WET WELL-MOUNTED FACTORY STATION REQUIRED.
2. SEE CITY STANDARD DETAIL FOR EMERGENCY PUMP CONNECTION REQUIREMENTS.
3. SEE CITY STANDARD DETAIL FOR 1" HOSE BIBB AND REQUIREMENTS.
4. SEE CITY STANDARD ELECTRICAL DETAIL FOR ELECTRICAL REQUIREMENTS.
5. MINIMUM WET WELL DIAMETER IS 6 FOOT. THE MINIMUM REQUIRED DEPTH OF WET WELL BELOW THE LOWEST INVERT SHOULD BE SET TO ALLOW THE MINIMUM RUN AND CYCLE TIMES OF THE PUMPS.
6. STATION TOP TO BE MINIMUM OF 1 FOOT ABOVE EXISTING GRADE AND ITS ELEVATION SHALL BE NO LOWER THAN THE 100-YEAR BASE FLOOD ELEVATION.
7. ALL PIPING IN WET WELLS TO BE EPOXY LINED AND ASSEMBLED 316 STAINLESS STEEL BOLTS AND NUTS ONLY.
8. ALL PUMP SUCTION LINE FITTINGS TO BE FLANGED JOINT, EXCEPT BASE TEES SHALL BE GLUED PVC WITH GLUED PVC BOTTOM CAPS.
9. SUCTION LINES IN WET WELL SHALL BE SUPPORTED AT THE BASE WITH GLUED PVC SUCTION TEES WITH RUNS FACING VERTICALLY WITH SUITABLE 316 STAINLESS STEEL CHANNEL AND ACCESSORIES SUPPORTING THE SUCTION LINES MOUNTED HORIZONTALLY ACROSS THE WET WELL DIAMETER AND ATTACHED TO THE WET WELL SIDES.
10. ALL DISCHARGE FITTINGS TO BE PVC RESTRAINED JOINT.
11. ALL SEWER LINES ENTERING AND EXITING MANHOLES SHALL BE SEALED UTILIZING RUBBER BOOTS OR OTHER CITY APPROVED INFILTRATION LIMITING METHODS.
12. WET WELL SECTIONS SHALL BE JOINED USING "RAMNECK" JOINT MATERIAL AND SHALL BE FREE FROM SEEPAGE PRIOR TO ACCEPTANCE. PROVIDE EZWRAP BUTYL ADHESIVE TAPE PER MANUFACTURERS RECOMMENDATIONS AT EACH WET WELL SECTION EXTERIOR JOINT CIRCUMFERENCE. USE "EZSTICK" NO. 4 PRIMER PER MANUFACTURERS RECOMMENDATIONS PRIOR TO INSTALLATION OF EZ-WRAP TAPE.
13. NO SPLICES OR JUNCTION BOXES ARE ALLOWED FOR BALL FLOAT OR PUMP CORD INSTALLATION.
14. ALL LIFT STATIONS SHALL BE FIBERGLASS LINED OR LINED WITH ANOTHER MATERIAL AS APPROVED BY THE CITY. (ASTM D3753)
15. WET WELL CONSTRUCTION SHALL BE REINFORCED CONCRETE IN ACCORDANCE WITH ASTM C-76, 4000 PSI AT 28 DAYS. ALTERNATE CONSTRUCTION SHALL BE PRECAST MONOLITHIC WITH BASE SLAB IN ACCORDANCE WITH ASTM C-478.
16. ELECTRICAL PERMIT TO BE OBTAINED FROM THE CITY PRIOR TO BEGINNING WORK ON ANY ELECTRICAL WIRING, EQUIPMENT, ETC. ALL ELECTRICAL WIRING TO COMPLY WITH THE CURRENT NATIONAL ELECTRICAL CODE.
17. THREE COPIES OF THE LIFT STATION OPERATING MANUAL TO BE PROVIDED TO THE ENVIRONMENTAL SERVICES DEPARTMENT PRIOR TO FINAL ACCEPTANCE OF THE LIFT STATION.
18. EMERGENCY ELECTRICAL RECEPTACLE REQUIRED TO BE INSTALLED UNDER FIBERGLASS HOOD.
19. EMERGENCY HIGH LEVEL WET WELL FLASHING ALARM LIGHT REQUIRED, WITH AUDIBLE ALARM.
20. LINKABLE FUSED ELECTRICAL DISCONNECT REQUIRED.
21. THE PUMP STATION WIRING SHALL BE STANDARD COPPER. LIFT STATIONS WITH PUMPS 20HP OR GREATER WILL REQUIRE 277/480 VOLTAGE AND ONSITE GENERATOR AS SPECIFIED IN S-31
22. THREE PHASE POWER AND MOTORS REQUIRED.
23. DISCONNECT FOR FUTURE TELEMTRY TO BE PROVIDED. SEE CITY FOR REQUIREMENTS.
24. DEVELOPER /CONTRACTOR TO PAY ALL INITIAL ELECTRICAL CONNECTION CHARGES, ETC. ON THE DAY OF FINAL ACCEPTANCE BY THE CITY, ALL FUTURE MONTHLY ELECTRICAL BILLS TO BE TAKEN OVER BY THE CITY OF EDGEWATER. PLEASE CONTACT THE ENVIRONMENTAL SERVICES DEPARTMENT AT 424-2460 TO TRANSFER POWER BILL TO THE CITY.
25. 2-INCH PVC CONDUIT FOR FLOAT WIRES SHALL BE INSTALLED FOR ALL LIFT STATIONS.
26. THE FLOAT HANGER WILL BE INSTALLED AVOIDING ALL CONFLICTS WITH ANY INVERTS.
27. A MINIMUM OF 95% DENSITY WILL BE REQUIRED FOR ALL LIFT STATION STRUCTURES. (WET WELL, VALVE VAULT, ETC.)
28. CONTRACTOR MUST PROVIDE A POST CONSTRUCTION VIDEO OF ALL MANHOLES AND GRAVITY SEWER LINES.



STANDARD CONSTRUCTION DETAIL  
LIFT STATION WET WELL DESIGN AND  
CONSTRUCTION NOTES  
(NON-SUBMERSIBLE)

FILE NAME:

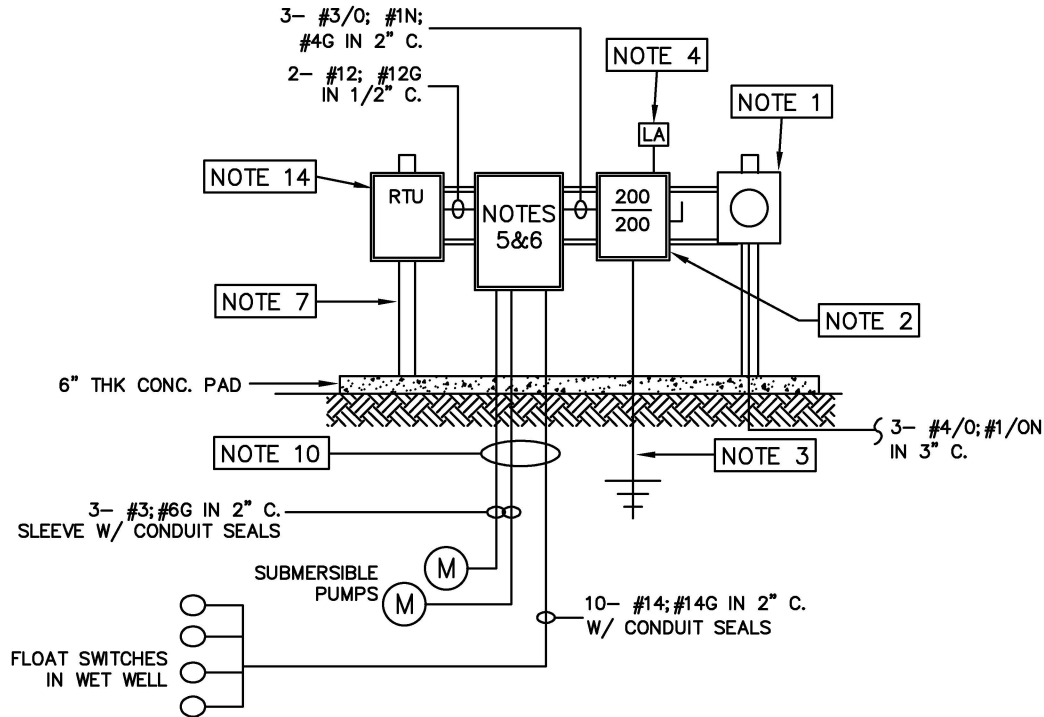
EW\_S21.DWG

DETAIL REF:

S-21

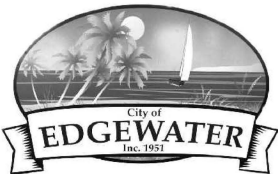






#### NOTES:

1. FPL METER WITH BY-PASS
2. 200 AMP 3 POLE SOLID NEUTRAL NEMA 4X DISCONNECT WITH CLASS R FUSE CLIPS AND CLASS RK-1 FUSES. STRUT MOUNT AND LABEL AS MAIN DISCONNECT.
3. SERVICE GROUND TO BE #4 SOLID COPPER RUN TO 2 8FT. GROUND RODS SPACED AT 10FT. APART WITH CAD -WELD CONNECTIONS.
4. LIGHTNING ARRESTOR TO BE INSTALLED IN PANEL. SURGE PROTECTION TO BE INSTALLED IN MAIN DISCONNECT. LIGHTNING ARRESTOR TO BE LEVITON #57120-M3 OR APPROVED EQUAL. SURGE PROTECTOR TO BE G.E. MODEL 9L18BBB301 OR APPROVED EQUAL.
5. ALARM LIGHT AND AUDIBLE ALARM TO BE INSTALLED ON ELECTRICAL PANEL. AUDIBLE ALARM TO BE FEDERAL SIGNAL MODEL #350 OR APPROVED EQUAL. ALARM LIGHT TO BE RUSSEL STOLL TYPE VLP, CAT.#
6. AUXILIARY POWER CONNECTION IS TO BE MOUNTED ON THE ELECTRICAL PANEL. ELECTRICAL PANEL TO BE BUILT WITH AN EMERGENCY BREAKER, AND BE EQUIPPED WITH A SLIDE BAR FAIL SAFE MECHANISM. AUXILIARY POWER CONNECTOR TO BE HUBBEL MODEL#4100B9W 6345A. OR APPROVED EQUAL, WITH SAFETY CAP.
7. PROVIDE 3IN. ALUMINUM PIPES OR 6in X 6in CEMENT POST AND 1/3 CUBIC YARD OF CEMENT TO SUPPORT EQUIPMENT RACK ASSEMBLY. EQUIPMENT RACK ASSEMBLY TO INCLUDE 1 1/2in STAINLESS STEEL KINDORF CHANNEL USING STAINLESS STEEL HARDWARE. (U-BOLTS, BOLTS, ETC)
8. ELECTRICAL PANEL TO BE BUILT WITH 2 EXTRA POWER POINTS, AND 2 EXTRA GROUNDS.
9. ALL WIRING COMPONENTS AND STRUCTURES WITHIN THE ELECTRICAL SYSTEM WILL BE IN STRICT COMPLIANCE WITH THE NATIONAL ELECTRICAL CODE.
10. ALL CONDUIT BETWEEN THE WET WELL AND THE ELECTRICAL PANEL WILL BE EQUIPPED WITH CONDUIT SEAL-OFFS.
11. NO CHANGES WILL BE MADE TO CITY OF EDGEWATER STANDARDS WITHOUT PRIOR APPROVAL OF CITY.
12. REQUIREMENTS FOR THE ELECTRICAL PANEL INTERNAL COMPONENTS ARE NOTED IN S-21
13. CONTRACTOR WILL BE REQUIRED TO APPLY FOR PERMITS WITH THE CITY OF EDGEWATER BUILDING DEPARTMENT.
14. PROVIDE CITY STANDARD RTU. DATA FLOW SYSTEMS. INC. MELBOURNE, FL.



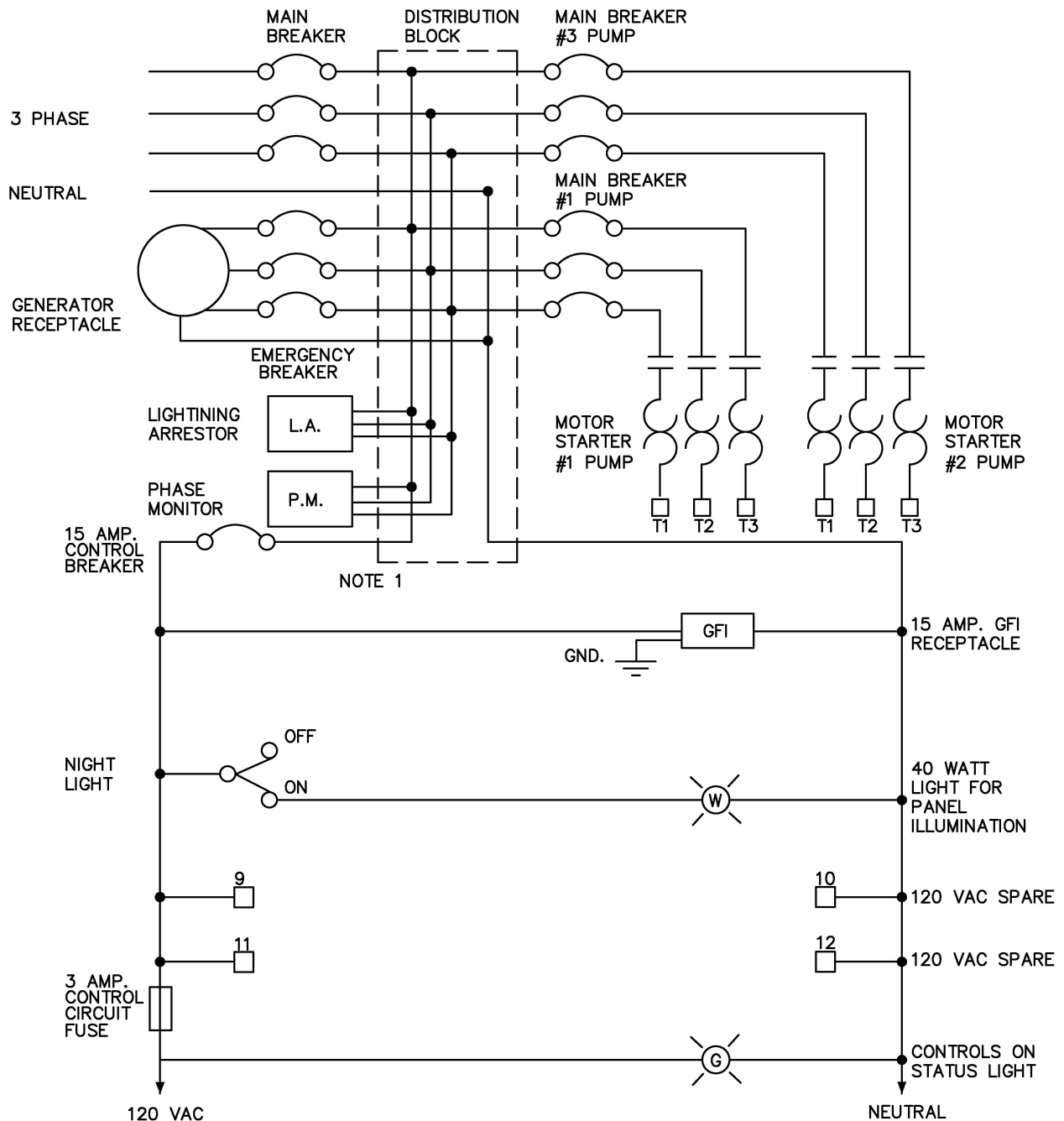
### STANDARD CONSTRUCTION DETAIL PACKAGED LIFT STATION ELECTRICAL EQUIPMENT RACK

FILE NAME:

EW\_S22.DWG

DETAIL REF:

S-22



NOTE 1 - FOR 277/480 VOLT PANELS STEP DOWN TRANSFORMER FOR 120 VOLT CONTROL VOLTAGE WILL BE REQUIRED.



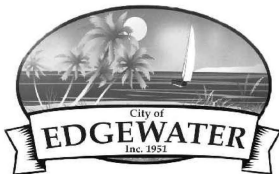
STANDARD CONSTRUCTION DETAIL  
PACKAGED LIFT STATION  
ELECTRICAL PANEL SCHEMATIC

FILE NAME:  
EW\_S22A.DWG

DETAIL REF:  
S-22A

## SANITARY SEWER DESIGN AND CONSTRUCTION NOTES

1. THE CITY'S ENVIRONMENTAL SERVICES DEPT. (424-2460) SHALL BE GIVEN A MINIMUM OF 48 HOURS ADVANCE NOTICE (NOT INCLUDING HOLIDAYS OR WEEKENDS) PRIOR TO BEGINNING ANY SANITARY SEWER CONSTRUCTION.
2. ALL GRAVITY SANITARY SEWER MAIN LINES SHALL BE 8" DIAMETER MINIMUM. COMMERCIAL SERVICE LATERALS WITH MULTIPLE CONNECTIONS SHALL BE GREEN 6" DIA. OR LARGER. ALL SINGLE FAMILY RESIDENTIAL SERVICE LATERALS SHALL BE 4" - SINGLE SERVICES.
3. ALL GRAVITY SANITARY SEWER LINES SHALL BE GREEN PVC SDR 26, ASTM D-3034. IN PLACES WHERE A MINIMUM COVER OF 4.0' CANNOT BE MAINTAINED, AWWA C-900 OR C-905 GREEN PVC DR-25, CLASS 100 OR CONCRETE ENCASEMENT SHALL BE USED. WATER LINES, RECLAIMED LINES, AND STORM DRAINAGE CROSSINGS SHALL ALSO FOLLOW THE CONCRETE ENCASEMENT REQUIREMENT PER THESE STANDARDS AND AS PER REGULATORY REQUIREMENTS.
4. MINIMUM GRAVITY SANITARY SEWER SLOPES ARE AS FOLLOWS:  
8" PIPE 0.40 %  
10" PIPE 0.30 %  
12" PIPE 0.22 %
5. GRAVITY SANITARY SEWER LINES SHALL BE INSTALLED WHENEVER POSSIBLE UNDER PAVED AREAS WITHIN PUBLIC RIGHTS-OF-WAY. UTILITY EASEMENTS SHALL BE PROVIDED WHENEVER PUBLICLY-OWNED SEWER LINES ARE CONSTRUCTED OUTSIDE OF A PUBLIC RIGHT-OF-WAY.
6. GRAVITY SANITARY SEWER LINE CONSTRUCTION SHALL BE ACCOMPLISHED BY THE USE OF A LASER INSTRUMENT UNLESS ANOTHER METHOD IS PREVIOUSLY APPROVED BY THE CITY.
7. THE CONTRACTOR SHALL AT ALL TIMES, DURING PIPE LAYING OPERATIONS, DEWATER THE GROUND SUFFICIENTLY TO KEEP THE GROUNDWATER ELEVATION A MINIMUM OF 6" BELOW THE PIPE BEING LAID WITHIN THE AREA OF THE TRENCH.
8. ALL PIPES SHALL BE LAID ON A FIRM FOUNDATION. SOFT OR SPONGY BEDDING FOR PIPES IS NOT ACCEPTABLE. ANY UNSUITABLE MATERIAL SHALL BE REMOVED AND REPLACED WITH A DRY, COMPACTED, GRANULAR MATERIAL SATISFACTORY TO THE CITY.
9. ON ALL EXCAVATION AND BACKFILLING THE CONTRACTOR SHALL PROVIDE ADEQUATE SHEETING AND BRACING IN ORDER TO PROVIDE FOR THE SAFETY OF WORKMEN, AS WELL AS REPRESENTATIVES OF THE CITY, THE DESIGN ENGINEER, AND THE DEVELOPER.
10. ALL TRENCHES SHALL BE BACKFILLED WITH ACCEPTABLE MATERIAL AND COMPACTED TO THE SPECIFIED MINIMUM COMPACTION (95% IN UNPAVED AREAS AND 98% IN PAVED AREAS) OF THE OPTIMUM DENSITY OF THAT MATERIAL BASED ON THE AASHTO T-180 MODIFIED PROCTOR TEST.
11. THE CONTRACTOR SHALL EMPLOY AN INDEPENDENT TESTING LABORATORY AT HIS OWN EXPENSE TO INSURE THAT COMPACTION OF ALL FILL MATERIAL IS COMPLETED PROPERLY. TESTS SHALL BE DONE ONE FOOT ABOVE THE PIPE AND THEN AT ONE FOOT VERTICAL INTERVALS UNTIL FINAL GRADE IS REACHED. TESTING SHALL BE COMPLETED AND TEST DOCUMENTS SUBMITTED TO THE CITY AT A MINIMUM FREQUENCY OF ONE SET OF TESTS BETWEEN EACH MANHOLE AND ONE ADDITIONAL SET OF TESTS AT EVERY MANHOLE. IDENTIFICATION OF TEST LOCATIONS SHALL BE CLEARLY INDICATED ON TEST REPORTS. TEST RESULTS SHALL BE FORWARDED PROMPTLY TO THE CITY'S DESIGNATED SITE INSPECTOR.
12. THE CONTRACTOR SHALL INSTALL A METALLIZED FOIL LOCATOR TAPE, OR SIMILAR DEVICE AS MAY BE APPROVED BY THE CITY FOR THE FULL LENGTH OF ALL PVC SEWAGE FORCE MAINS. THIS PIPE LOCATOR AID SHALL BE INSTALLED BETWEEN 15" AND 24" BELOW FINISHED GRADE OR AS DIRECTED BY THE MANUFACTURER. TAPE SHALL BE COLOR CODED GREEN FOR SANITARY SEWER AND FORCE MAIN. INSTALL 12 GAUGE TRACING WIRE IN TRENCH.



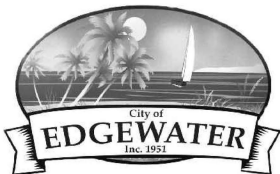
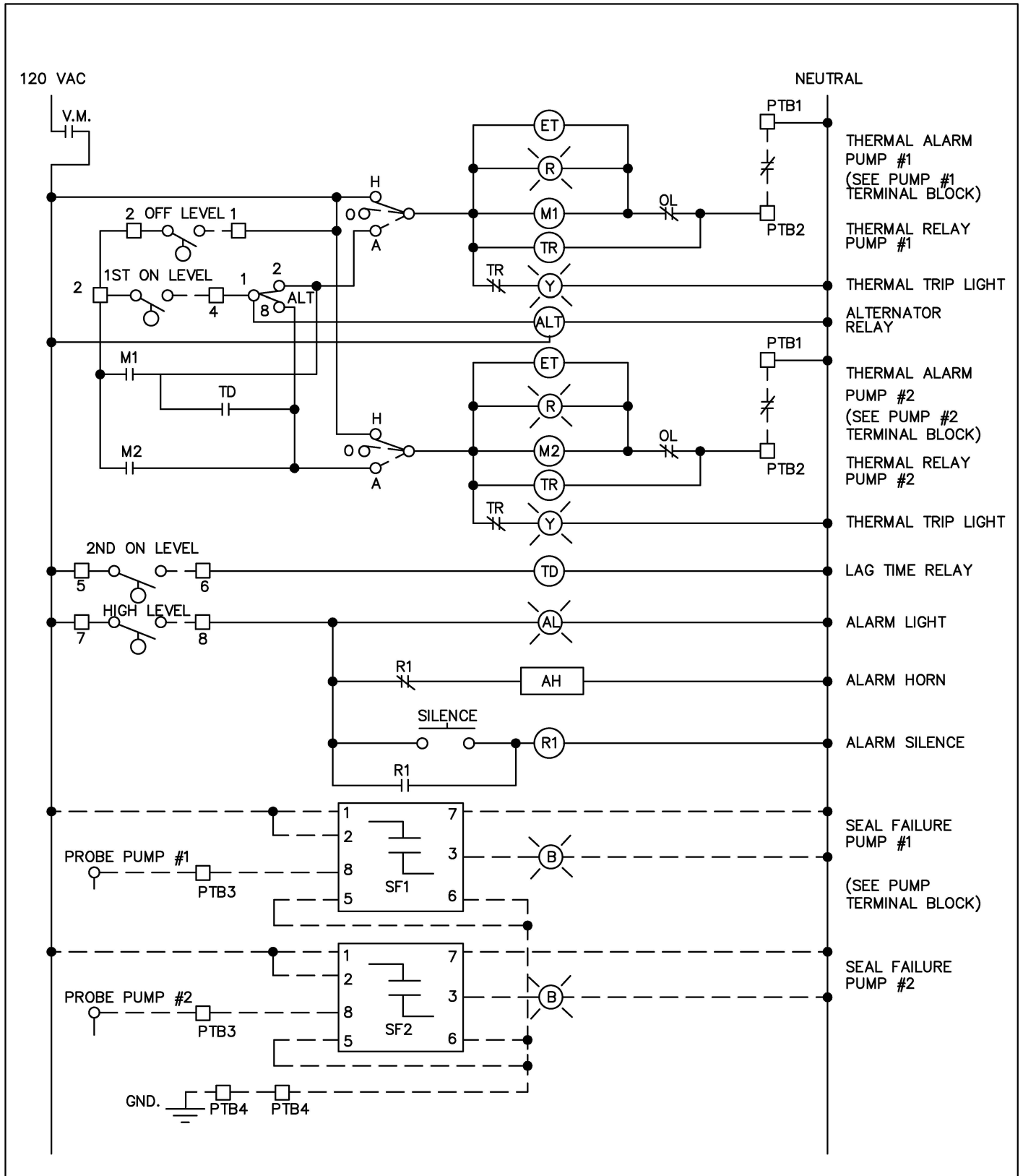
### STANDARD CONSTRUCTION DETAIL SANITARY SEWER DESIGN AND CONSTRUCTION NOTES

FILE NAME:

EW\_S23.DWG

DETAIL REF:

S-23



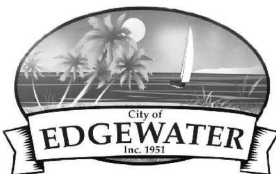
STANDARD CONSTRUCTION DETAIL  
PACKAGED LIFT STATION  
ELECTRICAL PANEL SCHEMATIC

FILE NAME:  
EW\_S22B.DWG

DETAIL REF:  
S-22B

SANITARY SEWER DESIGN AND CONSTRUCTION NOTES:  
(CONTD.)

13. ALL TESTING REQUIRED BY THE CITY SHALL BE PAID FOR BY THE CONTRACTOR / DEVELOPER.
14. ALL LOCAL COLLECTION SANITARY SEWER MANHOLES SHALL BE PRECAST WITH A MINIMUM INSIDE DIAMETER OF 4 FEET.
15. STANDARD MANHOLES SHALL BE LOCATED AT INTERVALS NOT EXCEEDING 400 FEET.
16. ALL SEWER FITTINGS TO BE "HARCO" OR CITY APPROVED EQUAL.
17. MANHOLE RIMS SHALL MATCH FLUSH WITH THE FINISH GRADE ELEVATION IN PAVED AREAS AND A MINIMUM OF 0.2 FEET AND MAXIMUM OF 0.5 FEET ABOVE GRADE GENERALLY IN UNPAVED AREAS.
18. THE CONTRACTOR SHALL CONSTRUCT SANITARY SEWER MANHOLES IN SUCH A WAY THAT SEWER LINES DO NOT INTERSECT SEALED JOINTS BETWEEN SECTIONS OF THE MANHOLE.
19. RUBBER BOOTS AND STAINLESS STEEL BANDS SHALL BE UTILIZED IN THE CONNECTION OF THE SEWER MAIN TO THE MANHOLES (SEE STANDARD MANHOLE AND BOOT DETAIL).
20. INDIVIDUAL SANITARY SERVICE CONNECTORS ON NEW CONSTRUCTION SHALL NOT BE CONNECTED DIRECTLY INTO MANHOLES, AND MUST CONNECT TO SEWER MAIN LINES BY USE OF WYE CONNECTIONS, UNLESS OTHERWISE BE APPROVED BY THE CITY.
21. FOR SINGLE FAMILY HOMES, SINGLE OR DOUBLE FOUR INCH SEWER SERVICES LATERALS SHALL BE CONSTRUCTED SINGLES AT EACH LOT OR UNIT AND LOCATED ON THE DOWNSTREAM SIDE OF THE LOT CENTER LINE. DOUBLES LOCATED ON THE LOT LINES THESE SERVICES SHALL BE EXTENDED 4 FEET ABOVE GROUND AT THE PROPERTY LINE WITH A PVC RISER AND PLUG BEING EASILY VISIBLE FROM THE ROAD. RUBBER SEAL FITTINGS SHALL BE USED ON ALL LINES. NO GLUED JOINTS ARE PERMITTED ON LATERALS, INCLUDING DOUBLES.
22. FOR MULTI-FAMILY AND COMMERCIAL SITES, SIX INCH MINIMUM SEWER SERVICES AND CLEANOUTS SHALL BE PROVIDED AS APPROVED BY THE CITY.
23. SANITARY SEWER LIFT STATIONS AND FORCE MAINS, SIZE, MATERIAL, AND DESIGNS SHALL BE APPROVED BY THE CITY. LIFT STATIONS SHALL BE CONSTRUCTED WITH A MINIMUM WET WELL INTERIOR DIAMETER OF 6 FEET. FORCE MAINS SHALL BE A MINIMUM 6 INCH DIAMETER.
24. IT SHALL BE THE RESPONSIBILITY OF THE DESIGN ENGINEER TO PREPARE AND SUBMIT FLOTATION CALCULATIONS TO SIZE THE BASE OF THE WET WELL, AND ANY MANHOLES AS DEEMED NECESSARY BY THE CITY.
25. SANITARY SEWER DROP MANHOLES SHALL ONLY BE USED UNDER SPECIAL CONDITIONS AS APPROVED BY THE CITY. DROPS LESS THAN 2.0' SHALL NOT BE ALLOWED.
26. ALL SANITARY SEWER MANHOLE COVERS SHALL HAVE THE WORDS "EDGEWATER, FLORIDA SANITARY SEWER" CAST INTO THEM.
27. ALL SANITARY SEWER FORCE MAINS, SHALL BE PVC AWWA C-900, OR C-905 (COLOR "GREEN") (PRESSURE FITTINGS, PRESSURE CLASS 150 OR 250 EPOXY LINED DIP. THE FORCE MAIN MINIMUM DEPTH OF COVER SHALL BE 36".
28. ALL SANITARY SEWER FORCE MAINS SHALL USE A THRUST RESTRAINT JOINT METHOD IN COMPLIANCE WITH THE DUCTILE IRON PIPE RESEARCH ASSOCIATION GUIDELINES MODIFIED TO ACCOMMODATE PVC PIPE BY FOLLOWING THE RECOMMENDED INCREASE IN RESTRAINT LENGTH CORRESPONDING TO THE INSTALLATION OF POLYETHYLENE WRAP. IN NO INSTANCE SHALL THRUST BLOCKS BE PERMITTED.



STANDARD CONSTRUCTION DETAIL  
SANITARY SEWER DESIGN AND  
CONSTRUCTION NOTES

FILE NAME:

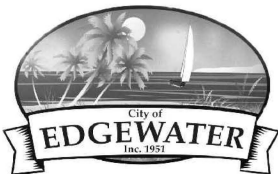
EW\_S24.DWG

DETAIL REF:

S-24

SANITARY SEWER DESIGN AND CONSTRUCTION NOTES  
(CONTD.)

29. SANITARY SEWER MANHOLES WHICH HAVE SEWER FORCE MAINS DISCHARGING DIRECTLY INTO THEM SHALL BE FIBERGLASS OR POLY-ETHYLENE LINED. RETRO-FITTING OF MANHOLES WITH LINERS SHALL BE REQUIRED WHEN NEW CONNECTIONS SUCH AS THIS ARE MADE. FIBERGLASS SHALL BE A MINIMUM 1/2" THICKNESS UNLESS APPROVED OTHERWISE BY THE CITY. OTHER TYPES OF LINING METHODS AND MATERIALS MAY BE CONSIDERED ON A CASE BY CASE BASIS. UNDER SPECIAL CIRCUMSTANCES WHERE HYDROGEN SULFIDE IS A MAJOR CONCERN MANHOLES UPSTREAM AND/OR DOWNSTREAM OF THE FORCE MAIN TIE-IN OR WET WELL MAY ALSO BE REQUIRED TO HAVE LININGS INSTALLED.
30. THE CITY RESERVES THE RIGHT TO REQUIRE THE DEVELOPER TO PERFORM VACUUM TESTING OF ALL SANITARY MANHOLES, AIR TEST SEWER MAINS, AND REQUIRES THAT ALL SANITARY SEWER MAIN LINES BE TELEVIEWED PRIOR TO FINAL ACCEPTANCE. LATERALS SHALL BE TELEVIEWED UPON DEMAND BY THE CITY PRIOR TO FINAL ACCEPTANCE WHEN IT IS SUSPECTED THAT A PROBLEM EXISTS.
31. ALL SEWER MAINS, PRIOR TO ACCEPTANCE BY THE CITY AND PRIOR TO ANY FINAL PAVING OPERATIONS, SHALL BE CLEANED FLUSHED AND TELEVIEWED USING A "PAN AND TILT" CAMERA BY A CITY APPROVED CONTRACTOR. THE VIDEO SHALL BE NON-STOP WITH AUDIO DESCRIBING WHAT IS BEING REVIEWED. WRITTEN VIDEO LOGS DESCRIBING THE CONDITION OF THE LINES SHALL ACCOMPANY THE TAPE SUBMISSION TO THE CITY PRIOR TO COMMENCING ANY INSTALLATION OF ASPHALT OR CONCRETE PAVEMENT. RE-TAPING MAY BE REQUIRED BY THE CITY IF ADDITIONAL CLEARING OR CORRECTIVE ACTIONS ARE NECESSARY.
32. ALL MANHOLES WITH FORCE MAIN CONNECTIONS SHALL BE OUTFITTED WITH EGRU LINERS OR OTHER TYPES OF LINERS APPROVED BY THE CITY. IN ADDITION, THE CITY MAY REQUIRE LINES TO BE INSTALLED IN AREAS WHERE THE ENVIRONMENTAL SERVICES DEPARTMENT BELIEVES THE NEED IS JUSTIFIED.
33. ALL SEWER LINES WHICH ARE CONSTRUCTED OUTSIDE OF PUBLIC RIGHTS-OF-WAY WITHIN SIDE YARDS, BACKYARDS, AND OTHER POORLY ACCESSIBLE AREAS SHALL BE CONSTRUCTED OF C-900 PVC. ABSOLUTELY NO USE OF PLASTIC STYRENE FITTINGS SHALL BE ALLOWED.
34. SEWER LATERAL LOCATIONS SHALL BE MARKED ALONG THE OUTSIDE OF THE CURB WITH A SAW CUT "V", OR BY A METAL TAB SET INTO THE PAVEMENT.
35. CONTEC A-2000 PVC PIPE SHALL NOT BE ALLOWED FOR USE.
36. EZ-WRAP PLASTIC, AS MANUFACTURED BY PRESS SEAL GASKET CORPORATION, SHALL BE USED ON THE OUTSIDE OF ALL MANHOLE AND WETWELL JOINTS. APPLY ONE LAYER OF 9" WRAP CENTERED ON EACH JOINT. A CITY INSPECTOR SHALL PERSONALLY INSPECT ALL JOINT SEALS PRIOR TO BACKFILLING OPERATIONS.
37. ALL PROPOSED SEWER FORCE MAINS SHALL BE FLUSHED, PRESSURE TESTED AND CLEARED FOR SERVICE IN ACCORDANCE WITH THE LATEST AWWA STANDARDS AND THE FLORIDA DEPARTMENT OF ENVIRONMENTAL PROTECTION REQUIREMENTS. THE CONTRACTOR SHALL NOTIFY THE CITY'S DESIGNATED SITE INSPECTOR WHO SHALL COORDINATE WITH CITY PERSONNEL AT THE ENVIRONMENTAL SERVICES DEPARTMENT (AS APPROPRIATE) AT LEAST 24 HOURS PRIOR TO BEGINNING A FULL-DIAMETER FLUSH OF THE MAINS PRIOR TO THE COMMENCEMENT OF PRESSURE TESTING (SUBJECT TO AVAILABILITY).
38. THE CITY MAY REQUIRE THE CONTRACTOR TO PIG FORCE MAINS IN EXCESS OF 6" IN DIAMETER AND PRIMARY TRANSMISSION MAINS LOCATED ON COLLECTOR AND ARTERIAL ROADWAYS. LAUNCHING AND EXTRACTION POINTS SHALL BE DETERMINED BY THE CONTRACTOR.



STANDARD CONSTRUCTION DETAIL  
SANITARY SEWER DESIGN AND  
CONSTRUCTION NOTES

FILE NAME:

EW\_S25.DWG

DETAIL REF:

S-25

SANITARY SEWER DESIGN AND CONSTRUCTION NOTES  
(CONTD.)

39. ANY TIE INTO AN EXISTING MANHOLE WILL BE COORDINATED WITH THE CITY, AND ALL CONFINED SPACE HAZARDS AND PROCEDURES WILL BE FOLLOWED.
40. ANY TIE INTO AN EXISTING SYSTEM WILL BE SWEEPED IN THE DIRECTION OF FLOW.
41. THE CONTRACTOR WILL BE RESPONSIBLE FOR ALL OSHA, DOT, OR ANY OTHER RULES & REGULATIONS THAT MAY APPLY.
42. AS A GENERAL RULE, THE NUMBER OF JOINTS SHALL BE LIMITED WHENEVER POSSIBLE. IN SPECIAL CASES WHERE A POINT REPAIR TO AN 8" TO 12" PVC SEWER MAIN IS REQUIRED, THE PROPER RIGID WRAP AROUND SLEEVE SUCH AS A JCM-210 OVERSIZED DUCTILE IRON COUPLING OR AN APPROVED EQUAL MAY BE ALLOWED BY SPECIAL APPROVAL BY THE CITY.
43. ALL IN-LINE SANITARY SEWER FORCE MAIN VALVES SHALL BE RESILIENT SEAT (AWWA C-509) VALVES FEATURING A LINED DUCTILE IRON BODY.
44. ALL TAPPING OF MAINS AND CORING OF MANHOLES SHALL BE COORDINATED WITH THE CITY BY AN APPROVED CONTRACTOR AND BILLED IN ACCORDANCE WITH THE ADOPTED FEE RESOLUTION. SCHEDULING OF THESE CONNECTIONS SHALL REQUIRE A MINIMUM 48 HOUR NOTIFICATION (MEASURED ON NORMAL WORK DAYS) DIRECTED TO THE CITY'S DESIGNATED SITE INSPECTOR WHO SHALL COORDINATE THE WORK DIRECTLY WITH THE ENVIRONMENTAL SERVICE DEPARTMENT. SUBSEQUENTLY, THE CONNECTION SHALL BE SCHEDULED TO COMMENCE ON THE APPROPRIATE DAY AND TIME ESTABLISHED BY CITY.
45. WITH RESPECT TO TIE-IN CONNECTIONS AND CORING OPERATIONS, THE CITY RESERVES THE RIGHT TO REQUIRE CONNECTIONS TO BE PERFORMED DURING PERIODS OF LOW FLOW (MIDNIGHT TO 6:00 A.M.) IN ORDER TO MINIMIZE SERVICE DISRUPTION TO EXISTING CUSTOMERS.
46. ALL WORK PERFORMED UPON SANITARY SEWER FACILITIES OWNED OR PROPOSED TO BE OWNED BY THE CITY SHALL BE CONSTRUCTED BY A LICENSED UNDERGROUND UTILITY CONTRACTOR, OR LICENSED GENERAL CONTRACTOR, WHO IS LICENSED IN THE STATE OF FLORIDA AND REGISTERED WITH THE CITY.
47. UPON CONSTRUCTION COMPLETION AND ACCEPTANCE OF THE SYSTEM, IT SHALL BE THE DESIGN ENGINEER'S RESPONSIBILITY TO ENSURE THAT THE SYSTEM IS PROPERLY CERTIFIED AND ACCEPTED BY THE FLORIDA DEPARTMENT OF ENVIRONMENTAL PROTECTION AND AS-BUILTS ARE PROVIDED TO THE CITY PRIOR TO ANY USE OF THE SYSTEM.
48. FOR CONSTRUCTION PURPOSES, THE PLANS SHALL DIMENSION THE LOCATION, OF ALL FORCE MAINS MEASURED FROM THE BACK OF CURB ( OR EDGE OF PAVEMENT, IF NO CURBING EXISTS. )
49. ALL HDPE PIPE INSTALLED FOR SEWAGE FORCE MAINS SHALL BE SDR 11 UNLESS SPECIFICALLY NOTED OTHERWISE. THE HDPE PIPE SHALL BE SIZED TO MATCH THE EXTERNAL DIAMETER OF THE PVC OR DIP TO WHICH IT IS ATTACHED.
50. LANDSCAPE PLANS SHALL CLEARLY DEPICT THE DESIGN LOCATION OF PLANTINGS RELATIVE TO THE LOCATION OF PUBLIC UTILITIES AND STORMWATER INFRASTRUCTURE IN ORDER TO EVALUATE POTENTIAL CONFLICTS.
51. ALL UTILITY INSTALLATIONS ARE SUBJECT TO REVIEW AND APPEAL BY THE CITY OF EDGEWATER. ALL STRUCTURES AND EQUIPMENT SUPPLIED AND/ OR INSTALLED SHALL MEET QUALITY AND PERFORMANCE STANDARDS PRIOR TO ACCEPTANCE. SUBSTANDARD INSTALLATIONS MAY BE REJECTED, REMEMBER MEASURES ARE SUBJECT TO CITY APPROVAL.



STANDARD CONSTRUCTION DETAIL  
SANITARY SEWER DESIGN AND  
CONSTRUCTION NOTES

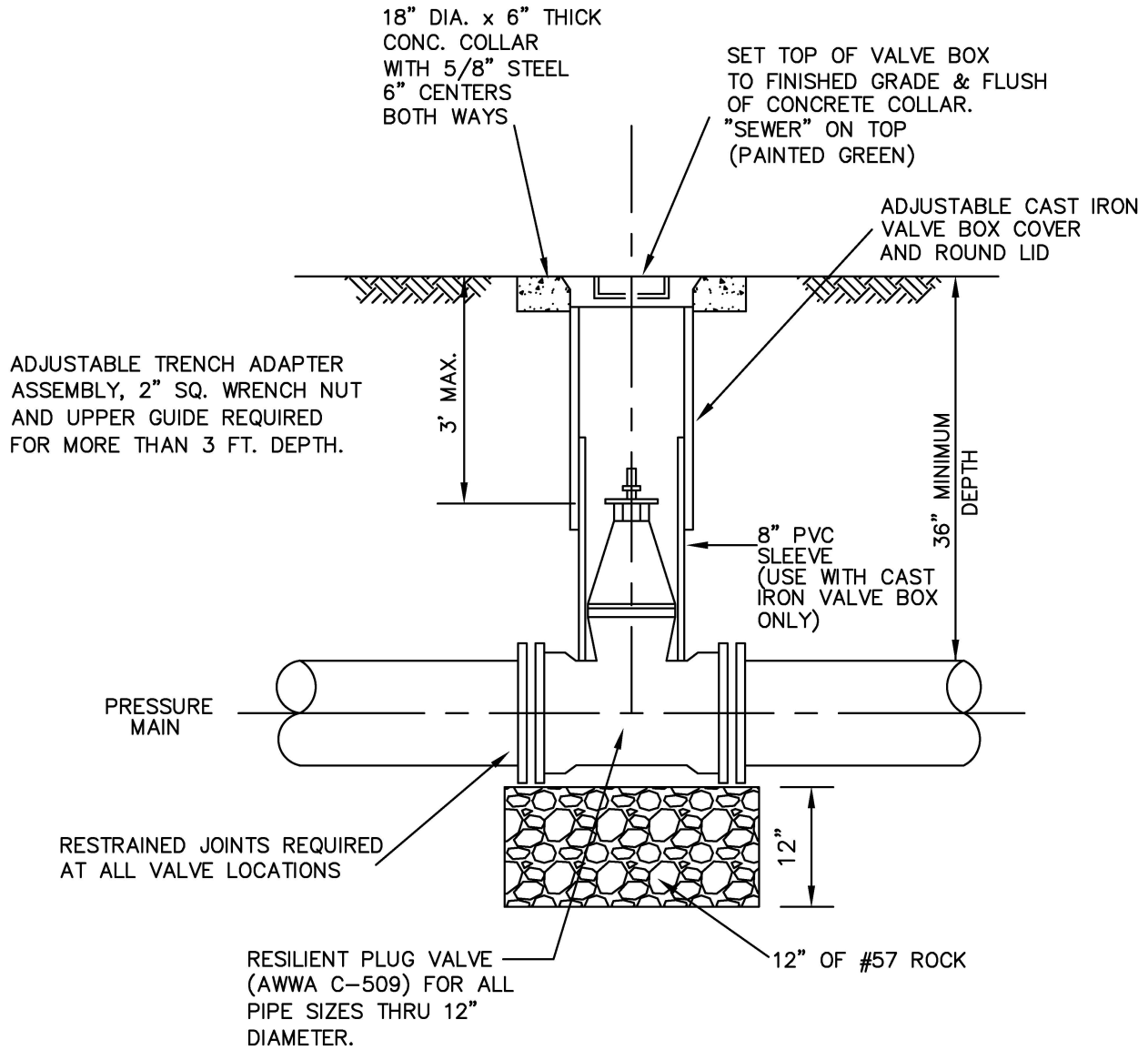
FILE NAME:

EW\_S26.DWG

DETAIL REF:

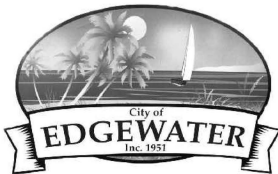
S-26





**NOTE:**

1. ROD OR BOLT TO TEE WHERE APPLICABLE.



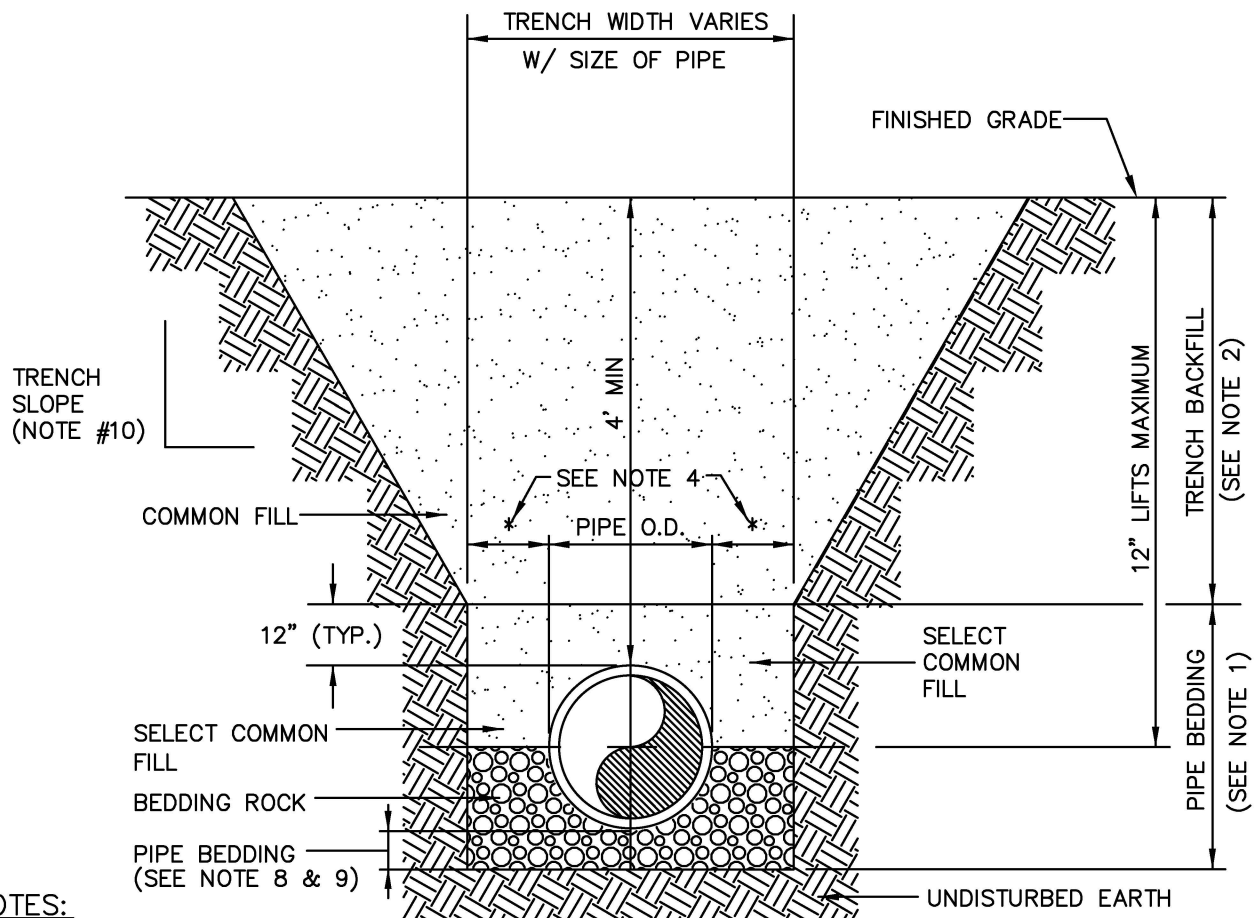
STANDARD CONSTRUCTION DETAIL  
SANITARY SEWER FORCE MAIN VALVE & VALVE BOX

FILE NAME:

EW\_S27.DWG

DETAIL REF:

S-27



#### NOTES:

1. PIPE BEDDING: SELECT COMMON FILL COMPACTED TO 95% OF THE MAXIMUM DENSITY AS PER AASHTO T-180.
2. TRENCH BACKFILL: COMMON FILL COMPACTED TO 95% OF THE MAXIMUM DENSITY AS PER AASHTO T-180. (98% DENSITY REQUIRED UNDER PAVEMENT, DRIVEWAYS AND STRUCTURES.)
3. USE TYPE "A" BEDDING TO BE DETERMINED IN THE FIELD AS DIRECTED BY THE CITY.
4. (\*): 15" MAX. FOR PIPE DIAMETER LESS THAN 24", AND 24" MAX. FOR PIPE DIAMETER 24" AND LARGER.
5. WATER SHALL NOT BE PERMITTED IN THE TRENCH DURING CONSTRUCTION.
6. ALL PIPE TO BE INSTALLED WITH BELL FACING UPSTREAM TO THE DIRECTION OF FLOW.
7. REFER TO SECTION 32.5 OF THE MANUAL FOR SHEETING AND BRACING IN EXCAVATIONS.
8. GRAVITY SEWERS SHALL UTILIZE TYPE "A" BEDDING, WHERE UNSUITABLE MATERIAL EXISTS. BEDDING DEPTH SHALL BE 4" MINIMUM FOR PIPE DIAMETER LESS THAN 15", AND 6" MINIMUM FOR PIPE DIAMETER 16" AND LARGER.
9. DEPTH FOR REMOVAL OF UNSUITABLE MATERIAL SHALL GOVERN DEPTH OF BEDDING ROCK BELOW THE PIPE. CITY SHALL DETERMINE IN THE FIELD REQUIRED REMOVAL OF UNSUITABLE MATERIAL TO REACH SUITABLE FOUNDATION.
10. REFER TO OSHA REQMTS. FOR SLOPING, SHEETING AND BRACING IN EXCAVATIONS.



### STANDARD CONSTRUCTION DETAIL TYPE "A" BEDDING AND TRENCH DETAIL (SPECIAL GRAVITY SEWER INSTALLATIONS)

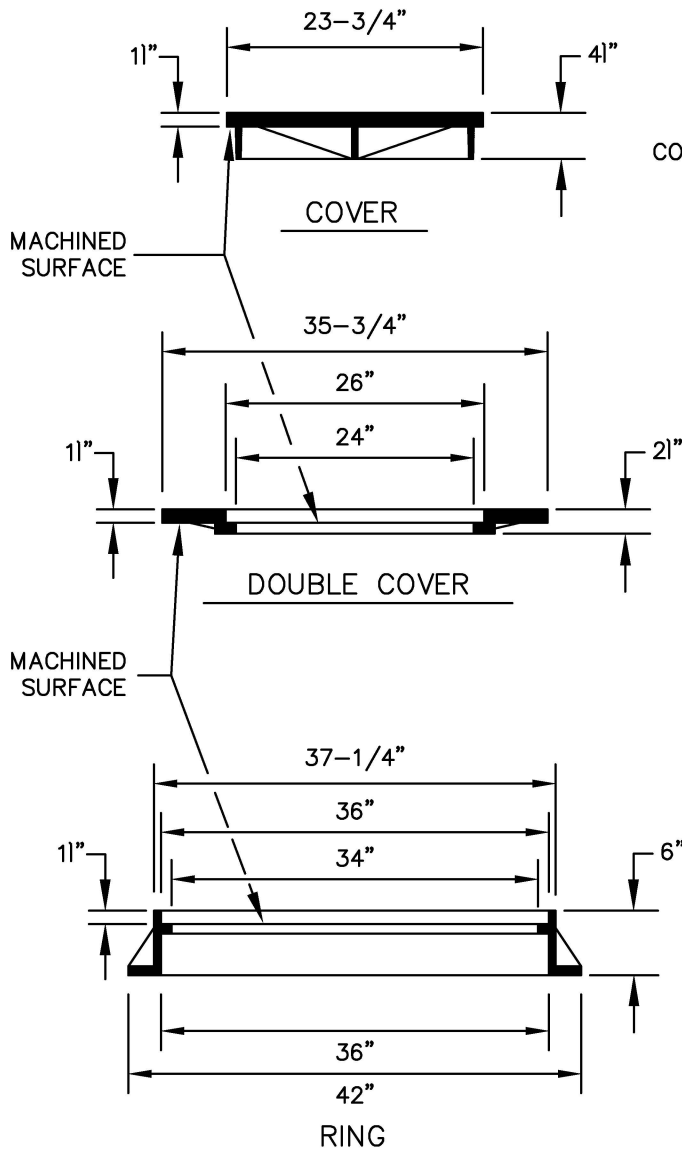
FILE NAME:

EW\_S28.DWG

DETAIL REF:

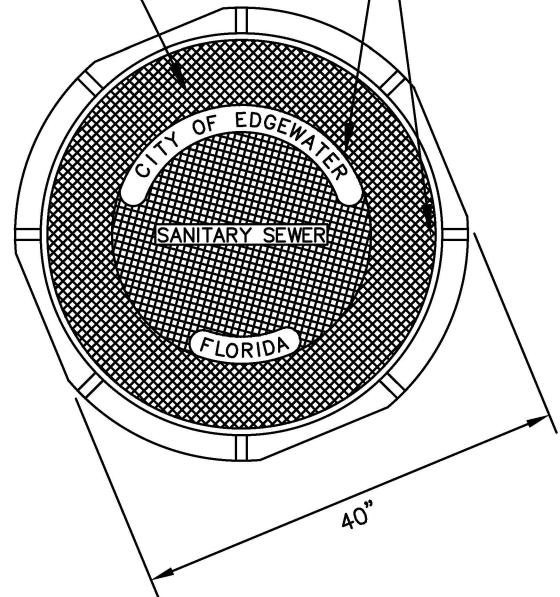
S-28





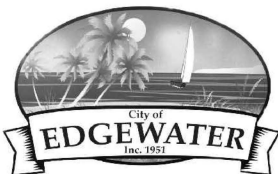
COVER, NON-SKID  
SURFACE

NON PENETRATING  
PICKHOLES  
SEE DWG 858



NOTES:

1. U.S. FOUNDRY 666 RING & CR-ORS & XB-ORS COVERS
2. COVER WT.: 212 LBS. APP. (185 LBS. ACTUAL)
3. DOUBLE COVER WT.: 215 LBS. APP.
4. RING WT.: 225 LBS. APP.
5. MATERIAL: ASTM-A48 CLASS 30B GRAY IRON



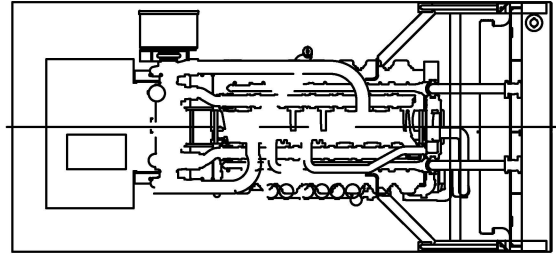
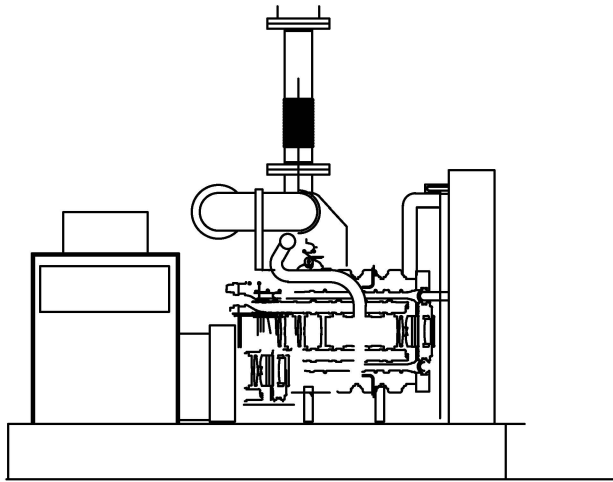
STANDARD CONSTRUCTION DETAIL  
SANITARY SEWER DOUBLE MANHOLE COVER

FILE NAME:

EW\_S30.DWG

DETAIL REF:

S-30



NOTES:

1. ANY LIFT STATION RATED AT 20 HORSEPOWER PUMPS OR GREATER WILL BE SUPPORTED BY AN ON-SITE PERMANENT MOUNTED GENERATOR.
2. GENERATOR SHALL BE MANUFACTURED BY OLYMPIAN OR OTHER CITY APPROVED EQUAL.
3. AN AUTOMATIC TRANSFER SWITCH WILL BE INSTALLED BETWEEN THE GENERATOR AND THE ELECTRIC PANEL.
4. THE GENERATOR SHALL BE RATED AT THE MAXIMUM STATION AMPERAGE PLUS 25 PERCENT.
5. THE GENERATOR SHALL BE MOUNTED ON A 28 DAY, 3,000 p.s.i., SIX INCH (6") THICK, SLAB WITH A MINIMUM TWO FOOT (2') SKIRT ON ALL FOUR SIDES.
6. THE GENERATOR SHALL HAVE ON SITE FUEL STORAGE SUFFICIENT TO RUN THE GENERATOR FOR A MINIMUM OF 24 HOURS.
7. THE GENERATOR SHALL BE ENCLOSED BY A NEMA RATED WATERPROOF ENCLOSURE AND BE SOUND ATTENUATED.
8. CONTRACTOR SHALL BE RESPONSIBLE FOR A MANUFACTURER'S START UP WITH THE CITY IN ATTENDANCE.



STANDARD CONSTRUCTION DETAIL  
PUMP STATION BACKUP GENERATOR

FILE NAME:

EW\_S31.DWG

DETAIL REF:

S-31