



The Edgewater ShoreLines

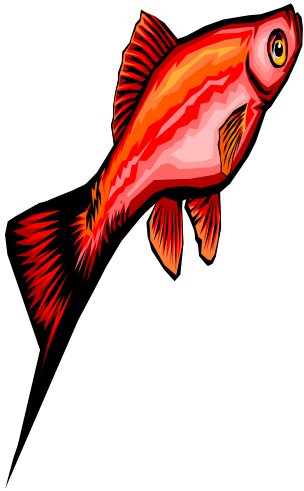


Volume 64

The Official Newsletter of the City Published Monthly

January 2008

FREE "HOOK KIDS ON FISHING" PROGRAM



Edgewater Leisure Services is partnering with Coastal Angler Magazine to present "Hook Kids on Fishing" a program designed to teach children skills needed to succeed at fishing. Kennedy Park, 101 N. Riverside Dr., Edgewater, is where kids 6 - 16 years of age will come on Saturday, Feb. 2, 2008, at 9 am to attend clinics on casting, conservation, fishing safety, knot tying and catch and release tactics. At 10 am, they will fish alongside professional fishing guides, from the Florida Guides Association, until 11 am. Children are encouraged to bring their own tackle, including rod & reel. For those without, everything will be provided. The first 100 children registered will receive a FREE rod/reel combo and tackle box *plus* prizes will be raffled during the event; with items donated by the Fish Florida Foundation. To ensure your child is one of the first 100 registered, please call Christi Moeller at Edgewater Leisure Services, (386) 424-2487. Come prepared to learn and enjoy a great family event, since a parent or legal guardian must accompany children.

NOTICE OF BOAT RAMP/PARK CLOSING

On Saturday, Feb. 2, 2008, the boat ramp and parking lot at Kennedy Park, 101 N. Riverside Dr., Edgewater, will be closed from 6 am until noon, to accommodate a children's fishing program. All vehicles and boat trailers must be removed from the park by 6 am. Boats will not be allowed in or out of the ramps from 6 am until noon. Any vehicles left in the parking area after 6 am will be towed at the owner's expense. For additional information, please contact Edgewater Leisure Services at (386) 424-2487.



PLANT PROPAGATION - FREE SEMINAR



Edgewater Leisure Services, in conjunction with the Master Gardeners of the University of Florida Extension Service, will host a FREE seminar 'Plant Propagation' on Tuesday, February 19, 2008, 10 am, at Menard-May Park, 413 S. Riverside Dr., Edgewater. This is the fourth in the Florida gardening series 'Learn & Grow'. Master Gardener Carol Alderman will show participants how to make free plants. Wear gardening clothes and gloves. The Master Gardeners will provide everything needed to get started. Join the monthly plant swap by bringing a potted plant, labeled with the name and care instructions, and take home a new plant. Please register by calling Edgewater Leisure Services at (386) 424-2487.

What is Pointless Personal Pollution?

The cause of water pollution is often blamed on “point sources,” such as industrial or sewage treatment facilities. Discharges from these sources flow through pipes and into our waterbodies. This pollution source can be readily identified and treated.

Pointless Personal Pollution, also known as non-point source pollution, commonly referred to as Stormwater runoff, non-point source pollution is water pollution that is difficult to identify and treat. This is because many of our daily activities can cause this type of pollution. This type of pollution can travel by different avenues into the ground and surface waters. Take a moment and look around your home and yard. Most will find sources of **Pointless Personal Pollution**. Any or all of these pollutants could land in the City’s waters.

Some examples of pollutants include:

- * Oil and grease from automobiles or lawn equipment.
- * Pesticides, fertilizers and weed killers.
- * Litter, yard clippings, pet wastes.
- * Sand and dirt from erosion.

The Ways Pointless Personal Pollution Impact Our Waters.

Pointless Personal Pollution comes in many forms that contaminate our waters in all different ways. Here are a few examples of how **Pointless Personal Pollutants** can harm our waters:

- * Nutrients from fertilizers, septic tanks and animal waste cause excessive growth of algae and aquatic weeds.
- * Garbage and litter reduce the oxygen in the water, which can kill the aquatic life.
- * Heavy metals and pesticides can kill aquatic organisms and contaminate ground water.

Ways You Can Reduce Your Pointless Personal Pollution:

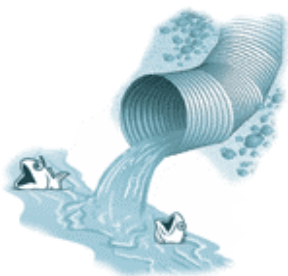
- * Shop for products labeled **biodegradable, non-toxic, non-phosphorus or water soluble**, these products readily decompose and will not pollute surface or ground waters.
- * Compost leaves, grass and clippings then use this as mulch to supplement fertilizers. When using compost you are returning nutrients back into the soil requiring less fertilizer to be used.
- * Do not apply lawn chemicals if rain is in the forecast, this prevents excessive wash off into the surface and ground waters.
- * Store your products properly by keeping toxic products in original containers and clearly marked in a safe and proper storage area. By proper storage you eliminate the possibility of spillage along with eliminating possible accidents.
- * Having your car regularly serviced/maintained will help prevent any leakage of fluids. Prevent the leaks while preventing the motor oil, anti-freeze, etc from being washed into waters.

Be part of the SOLUTION not the POLLUTION!!

For further information please contact the Department of Environmental Services

(386) 424-2476

Information provided by Florida Department of Environmental Protection



REFUSE

HOLIDAY SCHEDULE 2008

The following information should be saved for future use.

If you should have any questions about the schedule please feel free to contact the Department of Environmental Services, Sanitation Division at (386) 424-2476.

HOUSEHOLD GARBAGE HOLIDAY SCHEDULE

HOLIDAYS OBSERVED ARE FOLLOWS:	<u>HOUSEHOLD GARBAGE</u> If regular days are MONDAY & THURSDAY Pickups will be made on:	<u>HOUSEHOLD GARBAGE</u> If regular days are TUESDAY & FRIDAY Pickups will be made on:
New Year's Holiday Monday, December 31st and Tuesday, January 1st	Thursday ONLY	Friday ONLY
Martin Luther King Day Monday, January 21st	Tuesday & Thursday	Wednesday & Friday
President's Day Monday, February 18th	Tuesday & Thursday	Wednesday & Friday
Memorial Day Monday, May 26th	Tuesday & Thursday	Wednesday & Friday
Independence Day Friday, July 4th	Monday & Wednesday	Tuesday & Thursday
Labor Day Monday, September 1st	Tuesday & Thursday	Wednesday & Friday
Thanksgiving Day and Day After Thursday & Friday November 27th & 28th	Monday Only	Tuesday Only
Christmas Day Thursday, December 25th	Monday & Wednesday	Tuesday & Friday

ALL REFUSE MUST BE AT CURBSIDE BY 7:00AM.

Yard Trash/Brush loose laying pile of 4'x4'x4' should be set at curbside, IN FRONT OF YOUR HOME, for approximately twice a month pickup, the trash routes are completed anywhere from a few days to few weeks. **All trash/brush debris generated by a contractor must be disposed of by the contractor.**

Yard trash/brush will be accepted at the Public Works Facility for drop off from 7:30 am – 3:00 pm, **Monday - Friday from City Residents ONLY.**

All leaves, pine needles, etc. must be bagged or contained for Wednesday pickup. There will be NO pickup of bagged grass, leaves, pine needles, etc. on holiday weeks except Thanksgiving.

RECYCLING

HOLIDAY SCHEDULE 2008

The following information should be saved for future use.

If you should have any questions about the schedule please feel free to contact the Department of Environmental Services, Sanitation Division at (386) 424-2476.

HOUSEHOLD RECYCLING HOLIDAY SCHEDULE

HOLIDAYS OBSERVED ARE AS FOLLOWS:	RECYCLING MONDAY Pickups will be made on:	RECYCLING TUESDAY Pickups will be made on:	RECYCLING THURSDAY Pickups will be made on:	RECYCLING FRIDAY Pickups will be made on:
New Year's Day Tuesday, January 1st	MONDAY	TUESDAY	THURSDAY	FRIDAY
Martin Luther King Day Monday, January 21st	TUESDAY	WEDNESDAY	THURSDAY	FRIDAY
President's Day Monday, February 18th	TUESDAY	WEDNESDAY	THURSDAY	FRIDAY
Memorial Day Monday, May 26th	TUESDAY	WEDNESDAY	THURSDAY	FRIDAY
Independence Day Friday, July 4th	MONDAY	TUESDAY	WEDNESDAY	THURSDAY
Labor Day Monday, September 1st	TUESDAY	WEDNESDAY	THURSDAY	FRIDAY
Thanksgiving Day and Day After Thursday & Friday November 27th & 28th	MONDAY	TUESDAY	WEDNESDAY	FRIDAY
Christmas Day Thursday, December 25th	MONDAY	TUESDAY	WEDNESDAY	FRIDAY

ALL RECYCLING MUST BE AT CURBSIDE BY 7:00AM.